

APPENDIX B

Phylogenetic reconstruction using complete mitochondrial loci

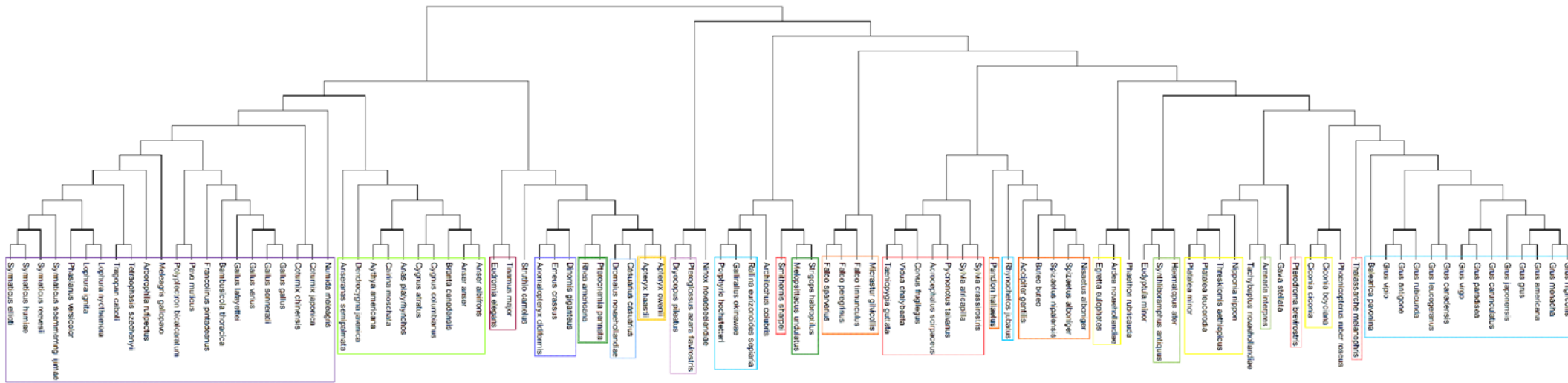


Figure B.1: Phylogenetic tree reconstruction of the complete gene sequences of the ND1 using MEGA 5 program. The Orders are indicated by different colour boxes.

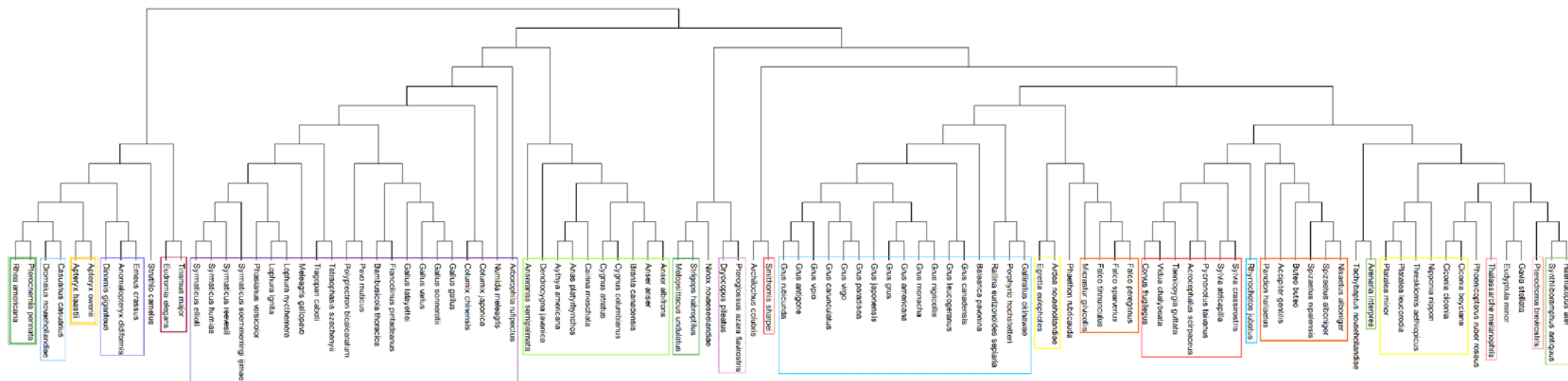


Figure B.2: Phylogenetic tree reconstruction of the complete gene sequences of the ND3 using MEGA 5 program. The Orders are indicated by different colour boxes.

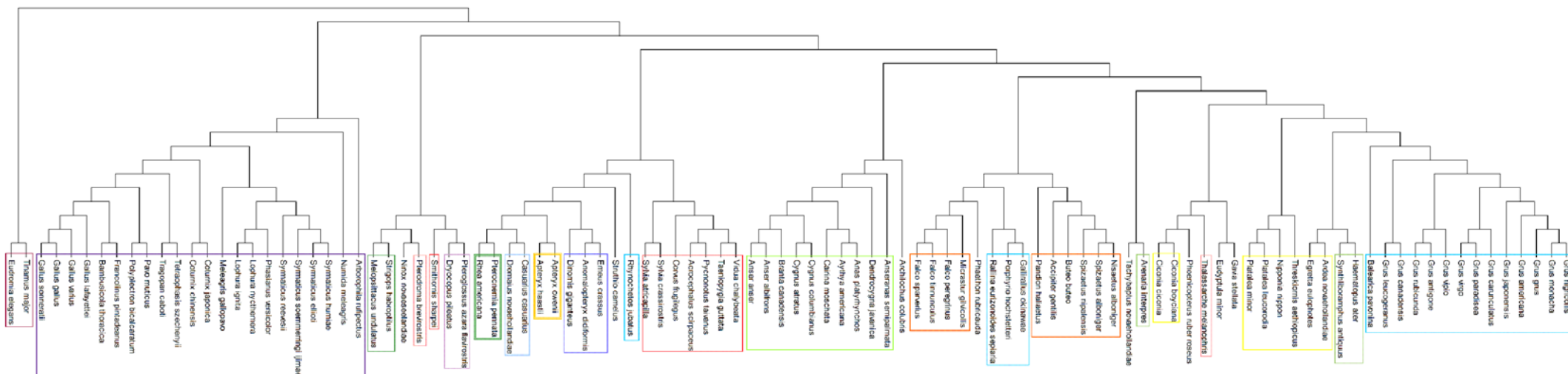


Figure B.3: Phylogenetic tree reconstruction of the complete gene sequences of the ND4L using MEGA 5 program. The Orders are indicated by different colour boxes.

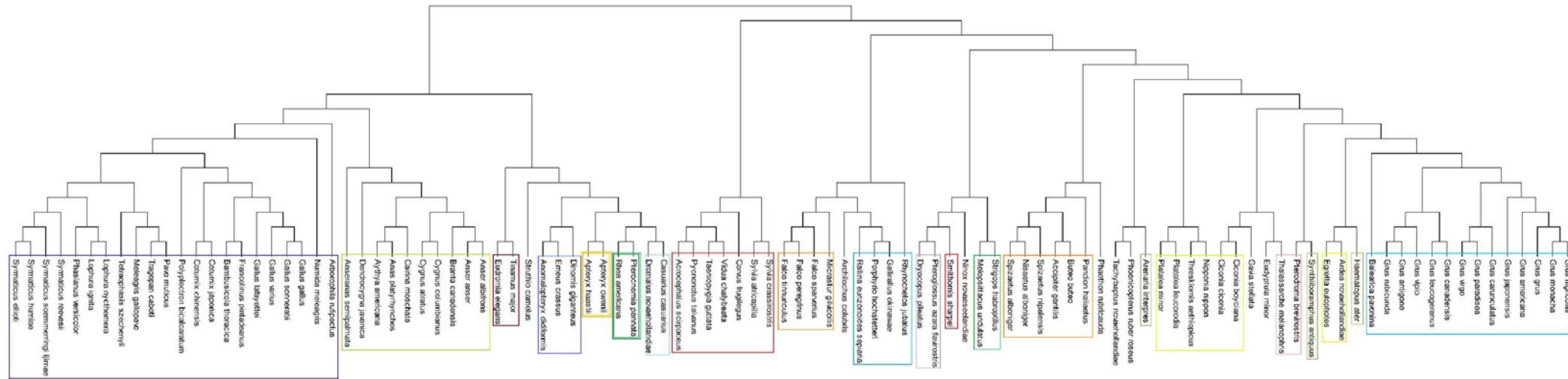


Figure B.4: Phylogenetic tree reconstruction of the complete gene sequences of the ND6 using MEGA 5 program. The Orders are indicated by different colour boxes.

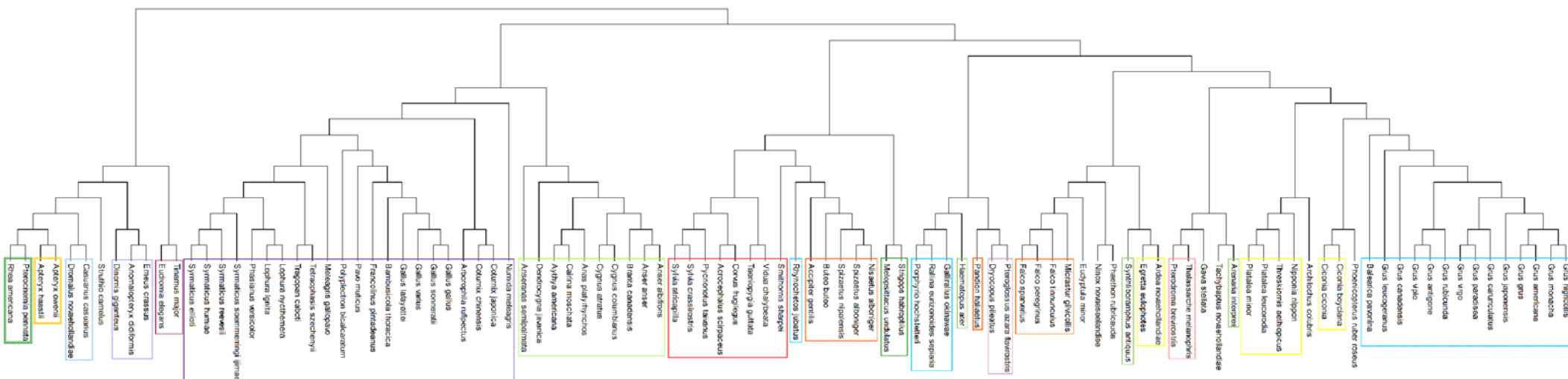


Figure B.6: Phylogenetic tree reconstruction of the complete gene sequences of the COIII using MEGA 5 program. The Orders are indicated by different colour boxes.

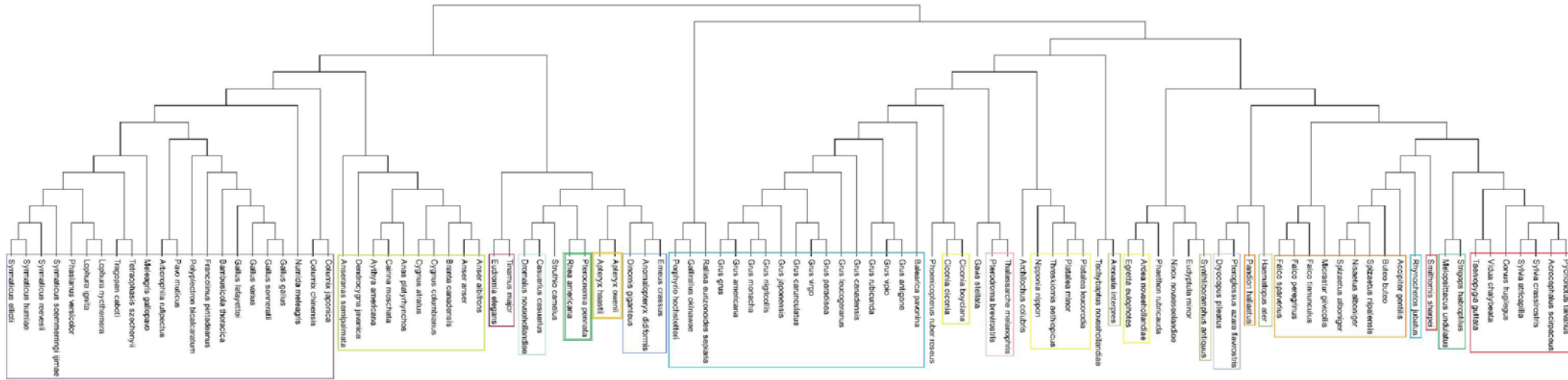


Figure B.7: Phylogenetic tree reconstruction of the complete gene sequences of the ATP6 using MEGA 5 program. The Orders are indicated by different colour boxes.

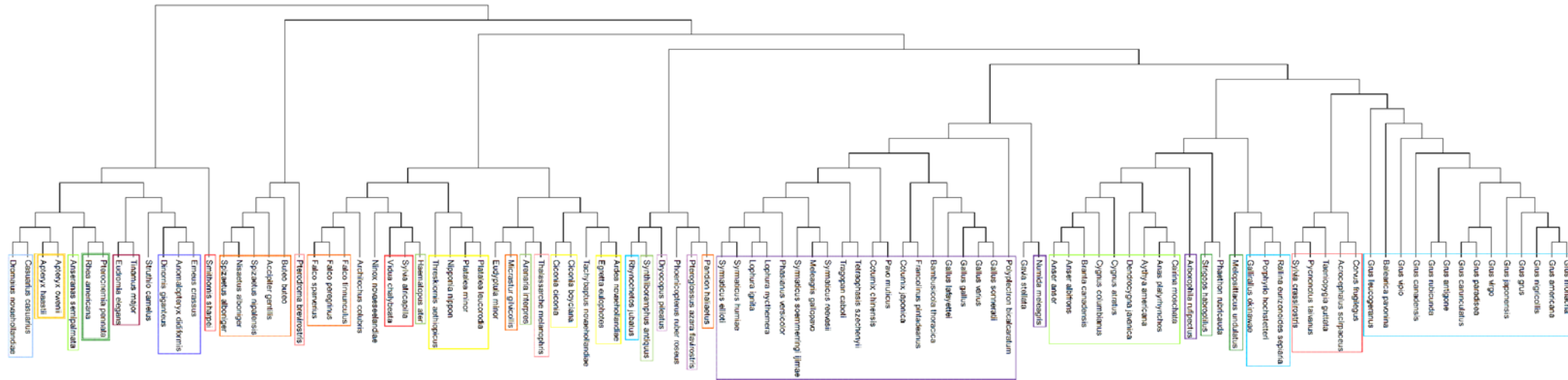


Figure B.8: Phylogenetic tree reconstruction of the complete gene sequences of the ATP8 using MEGA 5 program. The Orders are indicated by different colour boxes.