



**A HOUSE FOR THE GOVERNOR:
Settlement Theory, the South Australian Experiment, and the search for the first
Government House.**

VOLUME II – PICTORIAL ESSAY

By

Gordon Copland, BA (Hons) (Grad Dip Ed)

Department of Archaeology
Faculty of Education, Humanities, Law and Theology
Flinders University of South Australia

A Thesis submitted in fulfilment of the requirements of the Degree of
Doctor of Philosophy

May 2006



Plate 1 - Kingston Wing, Government House, Adelaide (view to the west) (G Copland 2000)

CONTENTS – VOLUME II

Plates

Appendix

PICTORIAL ESSAY (PE)

PE.0 An Artefact Catalogue in Pictorial Form

PE.1 Maps of Adelaide

PE.2 Landscapes of Adelaide

PE.3 The River Torrens and Surrounds

PE.4 Government Hut and Domain Boundaries

PE.5 Kingston Wing and Current Government House

PLATES – VOLUME II

PE 1 Maps

061 Town Acres Map of Adelaide c1837

062 Colonel Light's Survey c1838

063 Map of City of Adelaide c1838 & Enlargement of River Contours

064 Map of City of Adelaide 1838

065 Detailed map of Adelaide 1839

066 George Strickland Kingston Map c1841

067 Government Domain Enlarged from Kingston Map c 1841

068 Map Noting Early Buildings in Adelaide 1851

069 City of Adelaide 1876

070 City of Adelaide 1895

071 Railway Station Plan and Government Domain 1854

072 Boundaries of Parklands

073 Plan of Crown Lands and Railway Line North of Government Domain 1902

074 Train on Line Running North of Government House Domain 1900

075 Reserves of North Terrace c 1910

076 Government Domain c1920

077 Government House Domain Western Section c1926

078 Government House Domain Eastern Section c1926

079 Government House Domain c1927

080 Site on Domain for War Memorial 1927

081 Government Domain c2000, aerial view Footings of Buildings

082 CAD Maps of Domain and Surrounds 2001

PE 2 Landscapes of Adelaide

083 Adelaide and Mount Lofty c1837, view to east

084 King William Street c1840, by O Korn

085 Adelaide c 1840, view east, from west end of Hindley Street

086 North Terrace 1840, by J C Hailes

087 North Terrace c1841, view southeast, Lithograph by E. A Opie

088 Coloured Limited Edition of 1841 Drawing

089 Key to Buildings in Drawing of North Terrace c1841

090 Adelaide c1842, view to southeast, by R Davenport

091 Hindley Street c1845, view to east, by F R Nixon

092 Adelaide c1845, view southeast, by F R Nixon

093 Adelaide 1845, view to southeast, by F R Nixon

094 City of Adelaide c1849, view to southeast

- 095 North Terrace c1850, view to east
- 096 Adelaide c1860, view to southeast from Montefiore Hill
- 097 Adelaide c1860, view to southeast
- 098 Adelaide 1865, view to north from Town Hall Tower
- 099 Adelaide 1865-7, view to east from Montefiore Hill, by James Shaw
- 100 Adelaide c1876, view to east
- 101 Key to view of Adelaide from Lithograph 1876
- 102 Adelaide 1931, view to southwest
- 103 Adelaide c1960s, view to south
- 104 Government Domain and Surrounds c2000, aerial view

PE 3 River Torrens and Surrounds

- 105 North Terrace 1838, view to south
- 106 Adelaide from River Torrens c1844, view to east
- 107 City Bridge 1860, view to east
- 108 City Bridge 1860, view to west
- 109 River Torrens c1860, view to southwest
- 110 River Torrens from the Dam c1865, view to southeast
- 111 Adelaide Bridge c1877, view to east, replaced the City Bridge
- 112 Adelaide Bridge c1877, view to south
- 113 Torrens Weir c1880, view to east
- 114 River Torrens and Adelaide Bridge c1881, view to west
- 115 King William road, Elder Park c1882, view to northwest
- 116 Adelaide Bridge c1884, view to southeast
- 117 Elder Park c1915, view to south
- 118 Torrens Lake and Floating Palais 1929, view to northeast
- 119 Cheer Up Hut Adelaide 1919, Billiard Room
- 120 Cheer Up Hut, Interior 1919
- 121 Cheer Up Hut Adelaide Exterior 1920
- 122 Cheer Up Hut 1944, Dormitory
- 123 Elder Park, Sound Shell and Rotunda 1940, view to southwest
- 124 Elder Park Festival Theatre Building Site 1972, view to northeast
- 125 Festival Centre c1979
- 126 North and South Bank of River Torrens 2000, view to south from north bank
- 127 South Bank of River Torrens 2000, view south from north bank waters edge
- 128 South Bank of River Torrens 2000, view to south from south bank waters edge
- 129 South Bank of River Torrens 2000, view to south from first level south bank
- 130 Victoria Drive, Parade Grounds, Embankment and North Boundary of Domain

PE 4 Government Hut and Domain Boundaries

- 131 Government Hut 1837, view to southeast, by Mary Hindmarsh
- 132 First Government House c1838, view to southeast, artist unknown
- 133 Government Hut c1837, appears to be reversed
- 134 Government Hut c1837 artist unknown, also appears to be reversed
- 135 Government Hut c1839, view to southeast, by Martha Berkeley
- 136 Gardener's Cottage in Governor's Garden, view to west, by Mrs MacLeod
- 137 Government Hut c1839, view to southeast, by S T Gill
- 138 Eyre's Departure, Government Hut and House 1840, view to east, by J Neil
- 139 Eyre's Departure 1840, Western Boundary of Domain
- 140 Quarry 1840, Enlargement of mid left of Eyre's departure above
- 141 Eyre's Departure 1840, by George Hamilton

- 142 King William Street, North Terrace, and Sentry Box 1845, view to southeast
- 143 North Terrace 1845, view to west
- 144 King William Street and North Terrace c1900, view to southeast
- 145 North Terrace Domain Southern Boundary c1900, view to northeast
- 146 King William Street c1900, view to north
- 147 North Terrace c1876, view to west from southwest corner of Domain
- 148 King William Street and Domain Western Boundary 1865, view south
- 149 Domain Western Boundary Demolition of old Stables? 1926, view east
- 150 Domain Western Boundary 2000, view to east, approx. point Plate 148 drawn
- 151 Domain Western Boundary 2000, view to northeast from Festival Theatre Plaza

PE 5 New Government House

- 152 Kingston Wing Plan c1839
- 153 First & Ground Floor Plans Kingston Wing c1839, possible partition walls
- 154 Government House Ground Floor Plan and Alterations 1839-1875
- 155 Government House Ground Floor Plan 1988
- 156 Government House Eastern Façade, Kingston Wing c1840, view northwest
- 157 Kingston Wing c1840, possibly by Governor Gawler
- 158 Kingston Wing c1845, view to west, by F R Nixon
- 159 Kingston Wing c1840, view to west, possibly by F R Nixon
- 160 Government House c1845, view to northwest, by S T Gill
- 161 Government House c1850, view to northwest, by S T Gill
- 162 Domain Southern Boundary and Government House c1845, by S T Gill
- 163 Elevation of Proposed Extensions 1855
- 164 Government House Southern Façade post1855, view to northwest
- 165 Government House c1855, view to northeast
- 166 Government House c1860, view to northeast
- 167 Government House c1861, view to north, note lamp post
- 168 Government House and Grounds c 1866, view to north
- 169 Sentry Box and Government House c1868, view to northeast
- 170 Government House c 1867, view to northeast
- 171 Government House c1867, Eastern and South Façade, view to northwest
- 172 Government House, Grounds and southern Boundary c 1870, view to northeast
- 173 Sentry Box, Government House, Western and Southern Boundaries c1870
- 174 Government House, Grounds and King William Street c1870, view to north
- 175 Government House Portico 1870, view to northeast
- 176 Government House and Grounds 1871, view to northeast
- 177 Government House Eastern Façade c1872, view to west
- 178 Government House Western and Southern Façade c1872, view to northeast
- 179 Domain Western Boundary & Sentry Box c1880, view to northeast
- 180 Government House, Grounds and King William Street c1883, view to north
- 181 Government House Kingston Wing 1905, view to west
- 182 Government House Southern Façade 1971, view to northeast
- 183 Government House South-eastern Grounds and Pergola 1971, view to southeast
- 184 Government House South-western Grounds 1971, view to southeast
- 185 Government House Eastern Façade, Kingston Wing on left 2000, view to west
- 186 South-eastern Grounds and Fountain 2000, view to southeast
- 187 South-western Grounds 2000, view to northeast
- 188 Government House Southern Façade 2000, view to north
- 189 Government House Portico 2000, view to northeast, note Plate 185 of 1870
- 190 Government House Western Façade 2000, view to east, note Plate 188 c1872
- 191 Government House Northwest Façade, Northwest Grounds 2000

- 192 Courtyard 2000, view to east
- 193 Male and Female Servants' Quarters 2000, view to southeast
- 194 Northern Façade 2000, view to south
- 195 Outbuildings Northwest of Servant's Quarters 2000, view to the south west
- 196 East-wing Female Servant's Quarters and Garages 2000, view to the east
- 197 Peppertree Cottage 2000, view to north
- 198 Butler's Cottage 2000, view to northeast
- 199 Ablutions Block and Gardener's Facilities 2000, view to southeast
- 200 Government Cottage Glenelg 1870
- 201 Government Cottage Glenelg c1900
- 202 Position of Manning House on Government Farm, Belair National Park
- 203 Old Government House, Belair National Park, c1990s view to northwest
- 204 Old Government House, Belair National Park, 2000 view to northeast
- 205 Old Government House, Belair National Park, Floor Plan 1859
- 206 Government House, Heligoland

APPENDIX

Appendix	Description
01	Full Citation of Letters and Despatches from the PRO

PICTORIAL ESSAY (PE)

PE. 0 An Artefact Catalogue in Pictorial Form

As mentioned earlier, in Method Chapter One, this is so called Pictorial Essay practically takes the place of the usual artefact catalogue. The plates presented are mentioned throughout the text and have been assembled in one place, in the following manner, to assist in viewing these while reading the relevant sections. Also, in the spirit of openness and critical thinking, many plates have been provided to allow the reader to assess the deductive processes taken by the author. There are one or two missing because they were rendered unreadable through the scanning process, such as a northerly view of Government House and Grounds in 1881 (MLSA B4093), but in place of these there are pictures of the same or similar vista within a year or so of the unused pictures.

As can be seen for the Contents page of this Volume there has been a grouping made of particular subjects. Apart from the obvious relationship between the plates, the progression highlights the directions taken during the research, such as starting with the maps. All the data was not examined in this particular order as some information came to hand at later dates than others, so it is not strictly a chronological representation of the research. As new visual material came to light different ideas presented themselves along with the occasional change of direction, new avenue to research, or new and different questions were raised. It has become something of a microcosm of historical or archaeological research in general, in that in answering questions one is invariably led to asking other questions with diverging possibilities for further research.

N^o 7 shows nine preliminary land order holes, marked the right of choice to the Gov. across and
above the above and for Addendum instead. The order of choice thus marked were N^o 1, 2, 3, 4, 5, 6, 7, 8, 9,
10, 11, 12, 13, 14, 15, 16, 17, 18, 19, 20, 21, 22, 23, 24, 25, 26, 27, 28, 29, 30, 31, 32, 33, 34, 35, 36, 37, 38, 39, 40, 41, 42, 43, 44, 45, 46, 47, 48, 49, 50, 51, 52, 53, 54, 55, 56, 57, 58, 59, 60, 61, 62, 63, 64, 65, 66, 67, 68, 69, 70, 71, 72, 73, 74, 75, 76, 77, 78, 79, 80, 81, 82, 83, 84, 85, 86, 87, 88, 89, 90, 91, 92, 93, 94, 95, 96, 97, 98, 99, 100, 101, 102, 103, 104, 105, 106, 107, 108, 109, 110, 111, 112, 113, 114, 115, 116, 117, 118, 119, 120, 121, 122, 123, 124, 125, 126, 127, 128, 129, 130, 131, 132, 133, 134, 135, 136, 137, 138, 139, 140, 141, 142, 143, 144, 145, 146, 147, 148, 149, 150, 151, 152, 153, 154, 155, 156, 157, 158, 159, 160, 161, 162, 163, 164, 165, 166, 167, 168, 169, 170, 171, 172, 173, 174, 175, 176, 177, 178, 179, 180, 181, 182, 183, 184, 185, 186, 187, 188, 189, 190, 191, 192, 193, 194, 195, 196, 197, 198, 199, 200, 201, 202, 203, 204, 205, 206, 207, 208, 209, 210, 211, 212, 213, 214, 215, 216, 217, 218, 219, 220, 221, 222, 223, 224, 225, 226, 227, 228, 229, 230, 231, 232, 233, 234, 235, 236, 237, 238, 239, 240, 241, 242, 243, 244, 245, 246, 247, 248, 249, 250, 251, 252, 253, 254, 255, 256, 257, 258, 259, 260, 261, 262, 263, 264, 265, 266, 267, 268, 269, 270, 271, 272, 273, 274, 275, 276, 277, 278, 279, 280, 281, 282, 283, 284, 285, 286, 287, 288, 289, 290, 291, 292, 293, 294, 295, 296, 297, 298, 299, 300, 301, 302, 303, 304, 305, 306, 307, 308, 309, 310, 311, 312, 313, 314, 315, 316, 317, 318, 319, 320, 321, 322, 323, 324, 325, 326, 327, 328, 329, 330, 331, 332, 333, 334, 335, 336, 337, 338, 339, 340, 341, 342, 343, 344, 345, 346, 347, 348, 349, 350, 351, 352, 353, 354, 355, 356, 357, 358, 359, 360, 361, 362, 363, 364, 365, 366, 367, 368, 369, 370, 371, 372, 373, 374, 375, 376, 377, 378, 379, 380, 381, 382, 383, 384, 385, 386, 387, 388, 389, 390, 391, 392, 393, 394, 395, 396, 397, 398, 399, 400, 401, 402, 403, 404, 405, 406, 407, 408, 409, 410, 411, 412, 413, 414, 415, 416, 417, 418, 419, 420, 421, 422, 423, 424, 425, 426, 427, 428, 429, 430, 431, 432, 433, 434, 435, 436, 437, 438, 439, 440, 441, 442, 443, 444, 445, 446, 447, 448, 449, 450, 451, 452, 453, 454, 455, 456, 457, 458, 459, 460, 461, 462, 463, 464, 465, 466, 467, 468, 469, 470, 471, 472, 473, 474, 475, 476, 477, 478, 479, 480, 481, 482, 483, 484, 485, 486, 487, 488, 489, 490, 491, 492, 493, 494, 495, 496, 497, 498, 499, 500, 501, 502, 503, 504, 505, 506, 507, 508, 509, 510, 511, 512, 513, 514, 515, 516, 517, 518, 519, 520, 521, 522, 523, 524, 525, 526, 527, 528, 529, 530, 531, 532, 533, 534, 535, 536, 537, 538, 539, 540, 541, 542, 543, 544, 545, 546, 547, 548, 549, 550, 551, 552, 553, 554, 555, 556, 557, 558, 559, 560, 561, 562, 563, 564, 565, 566, 567, 568, 569, 570, 571, 572, 573, 574, 575, 576, 577, 578, 579, 580, 581, 582, 583, 584, 585, 586, 587, 588, 589, 590, 591, 592, 593, 594, 595, 596, 597, 598, 599, 600, 601, 602, 603, 604, 605, 606, 607, 608, 609, 610, 611, 612, 613, 614, 615, 616, 617, 618, 619, 620, 621, 622, 623, 624, 625, 626, 627, 628, 629, 630, 631, 632, 633, 634, 635, 636, 637, 638, 639, 640, 641, 642, 643, 644, 645, 646, 647, 648, 649, 650, 651, 652, 653, 654, 655, 656, 657, 658, 659, 660, 661, 662, 663, 664, 665, 666, 667, 668, 669, 670, 671, 672, 673, 674, 675, 676, 677, 678, 679, 680, 681, 682, 683, 684, 685, 686, 687, 688, 689, 690, 691, 692, 693, 694, 695, 696, 697, 698, 699, 700, 701, 702, 703, 704, 705, 706, 707, 708, 709, 710, 711, 712, 713, 714, 715, 716, 717, 718, 719, 720, 721, 722, 723, 724, 725, 726, 727, 728, 729, 730, 731, 732, 733, 734, 735, 736, 737, 738, 739, 740, 741, 742, 743, 744, 745, 746, 747, 748, 749, 750, 751, 752, 753, 754, 755, 756, 757, 758, 759, 760, 761, 762, 763, 764, 765, 766, 767, 768, 769, 770, 771, 772, 773, 774, 775, 776, 777, 778, 779, 780, 781, 782, 783, 784, 785, 786, 787, 788, 789, 790, 791, 792, 793, 794, 795, 796, 797, 798, 799, 800, 801, 802, 803, 804, 805, 806, 807, 808, 809, 810, 811, 812, 813, 814, 815, 816, 817, 818, 819, 820, 821, 822, 823, 824, 825, 826, 827, 828, 829, 83

1. The Number of each sort and the names of the Spirits

the dT^2 curve.

[illegible]

A The name of the purchaser and, prior to which, note the completed name, was sold to
 Auction held for this purpose on Monday and Tuesday 12th & 13th March 1855.

4 The manner in which the data are recorded is that of a
 judgments were by absence or residence, thus

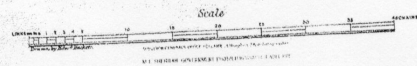


Plate 61 Town Acres Map of Adelaide c1837 (LTO Plan 0023-002)

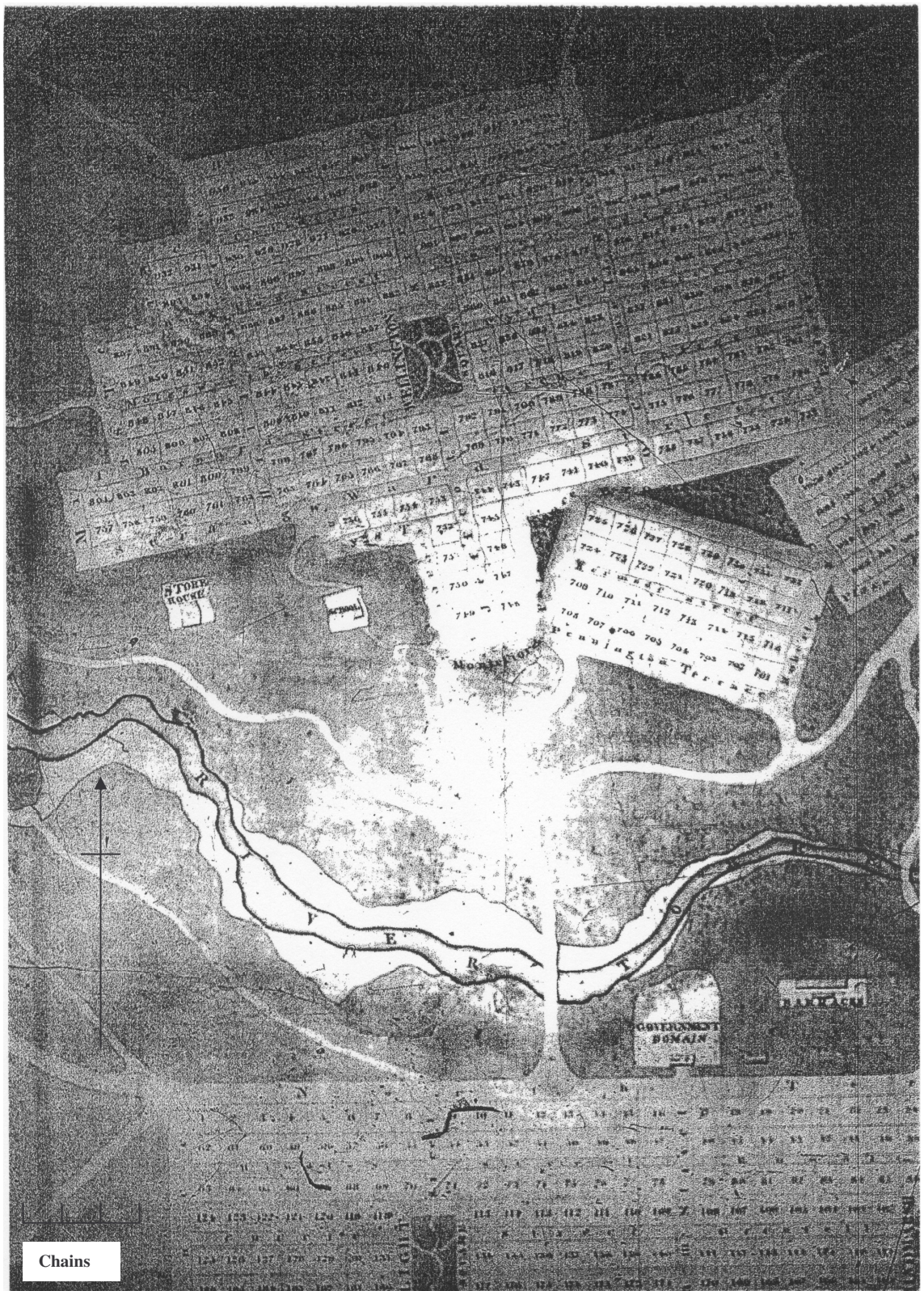


Plate 62 Colonel Light's Survey c1838 (Land Titles Office (LTO) Plan 2023-003)



Enlarged area from similar map by Colonel Light in 2nd Report on SA

THE CITY OF ADELAIDE
with the Acre Allotments numbered.
Surveyed by
Col. Light.

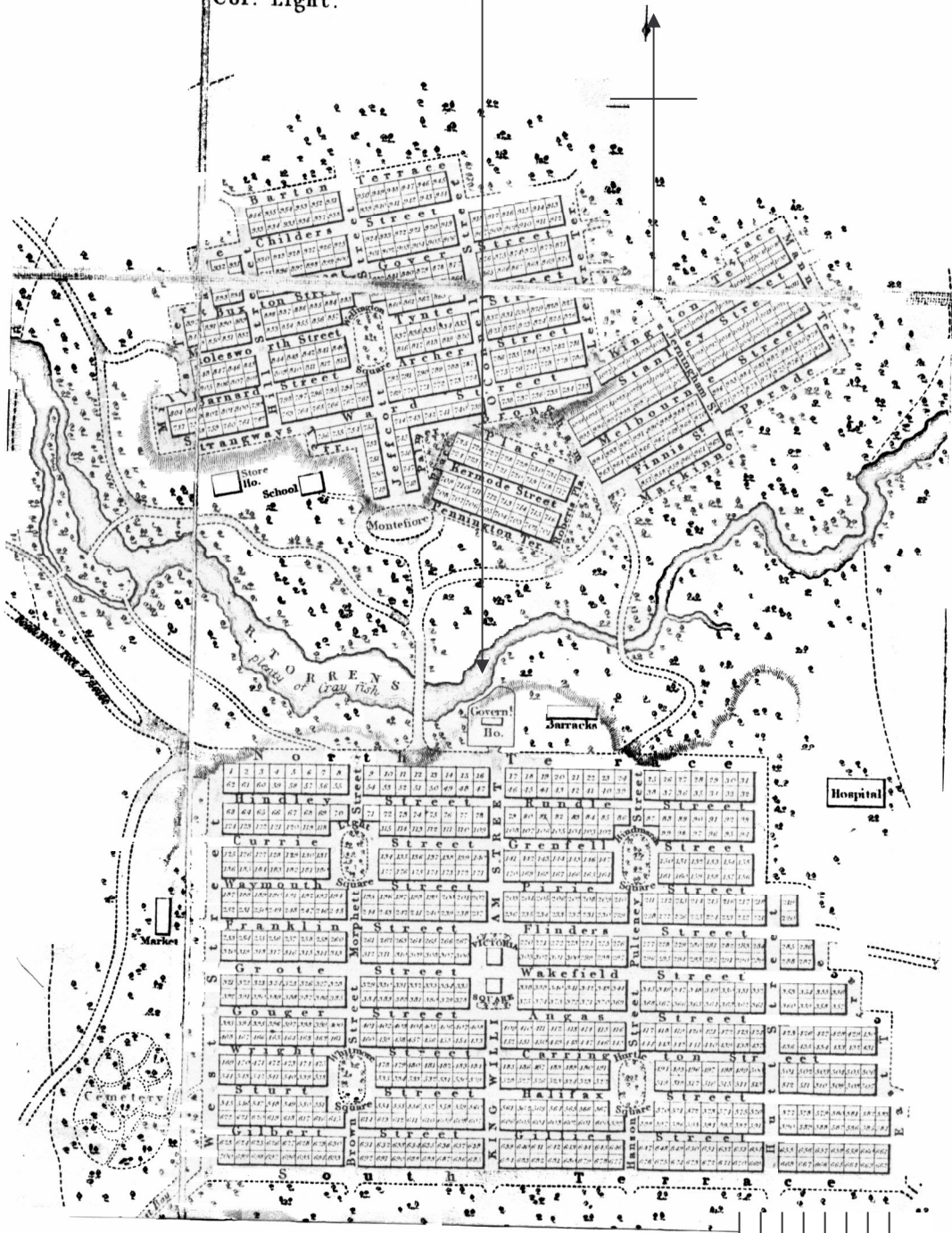


Plate 63 Map of City of Adelaide c1838 (LTO Plan 2023-017)

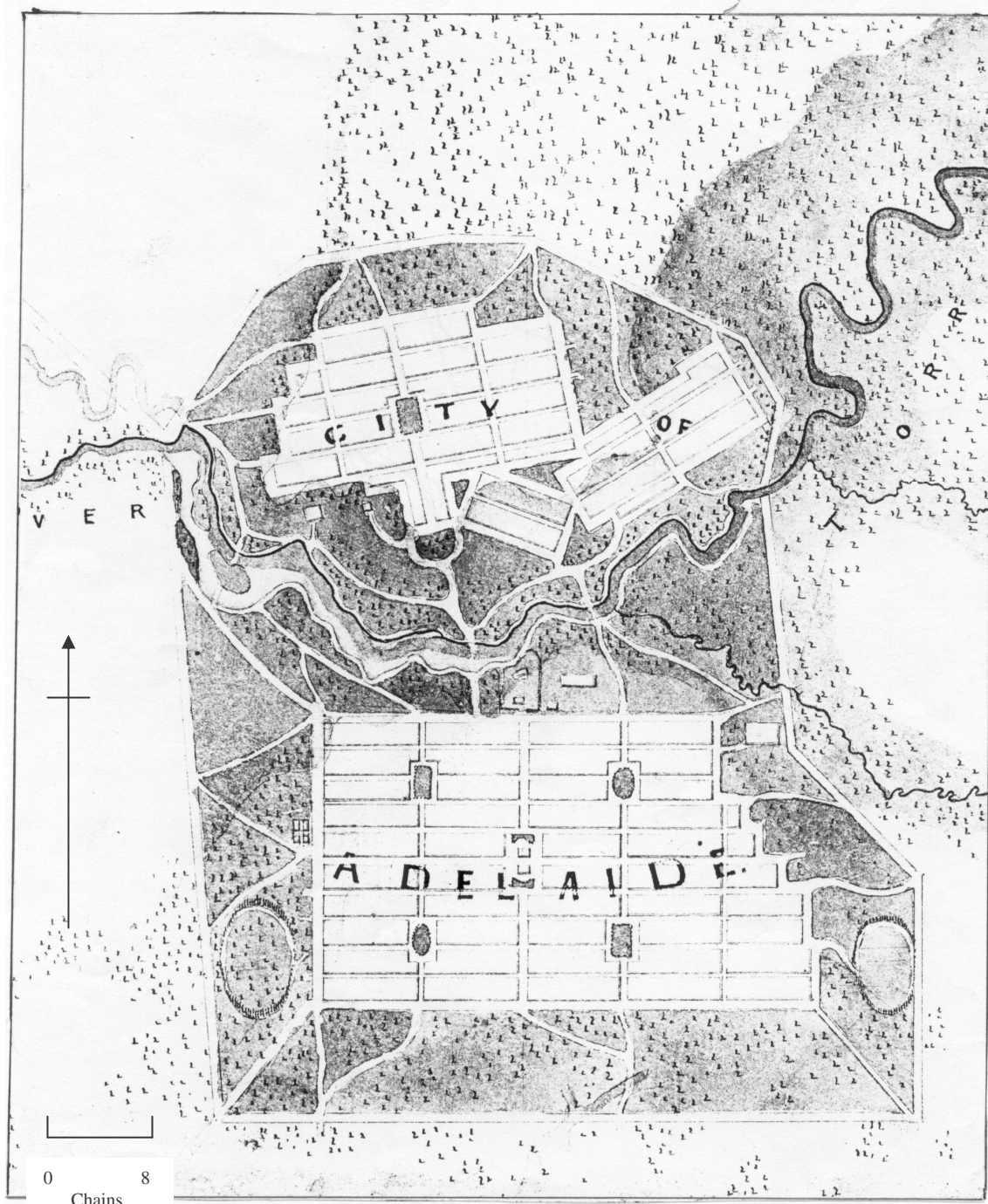


Plate 64 Map of City of Adelaide 1838 (Public Records Office (PRO), Kew, UK, CO 700 SAUSTRALIA 3/1: July 1838)



Plate 66 George Strickland Kingston Map c1841, On Wall of LTO (G Copland 2000) (PRO, CO 700 SAUSTRALIA 12)



Plate 67 Government Domain Enlarged from Kingston Map c 1841 above, Flag Pole in southwest corner of Domain

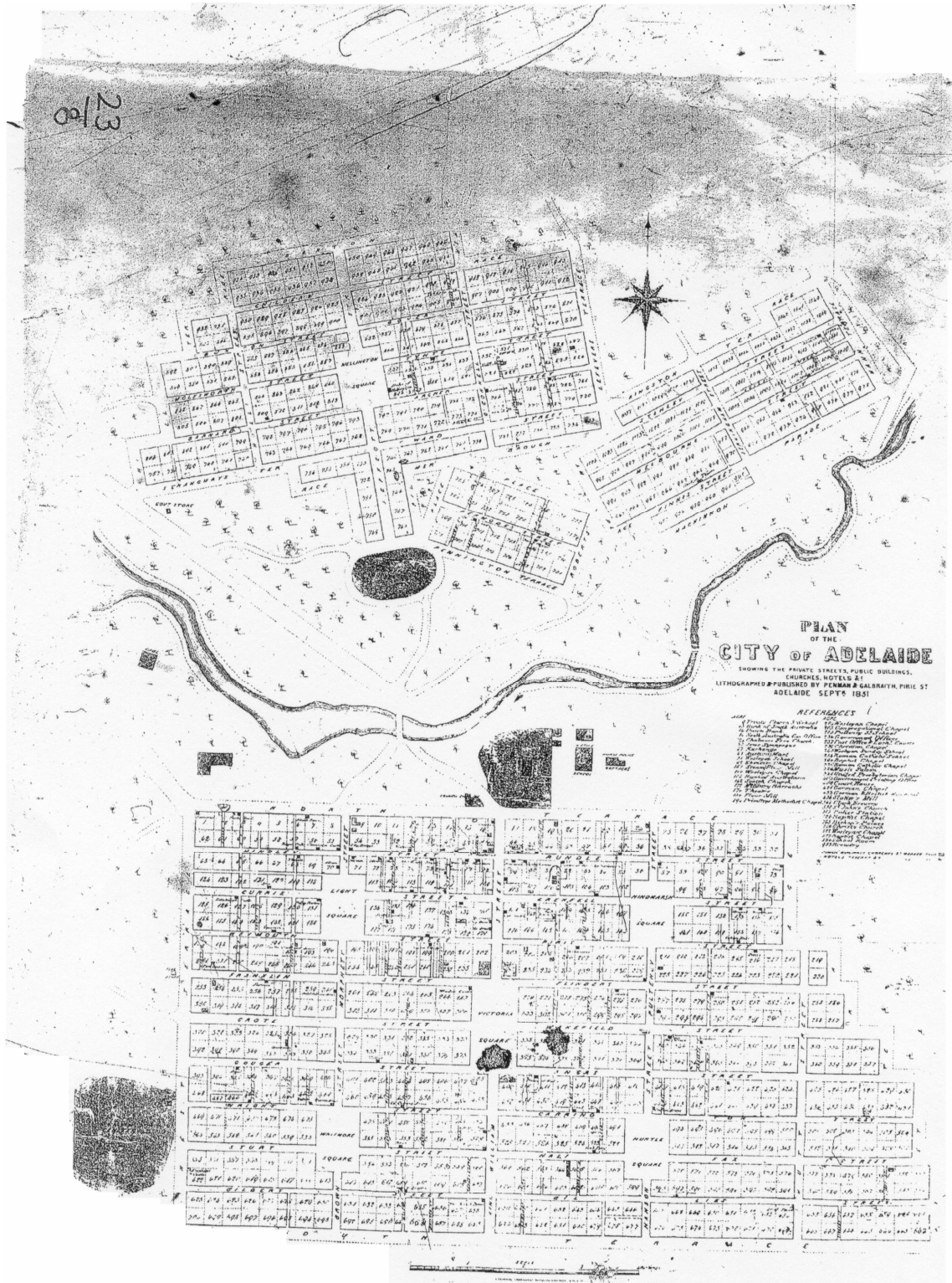


Plate 68 Map Noting Early Buildings in Adelaide 1851 (LTO Plan 2023-004)

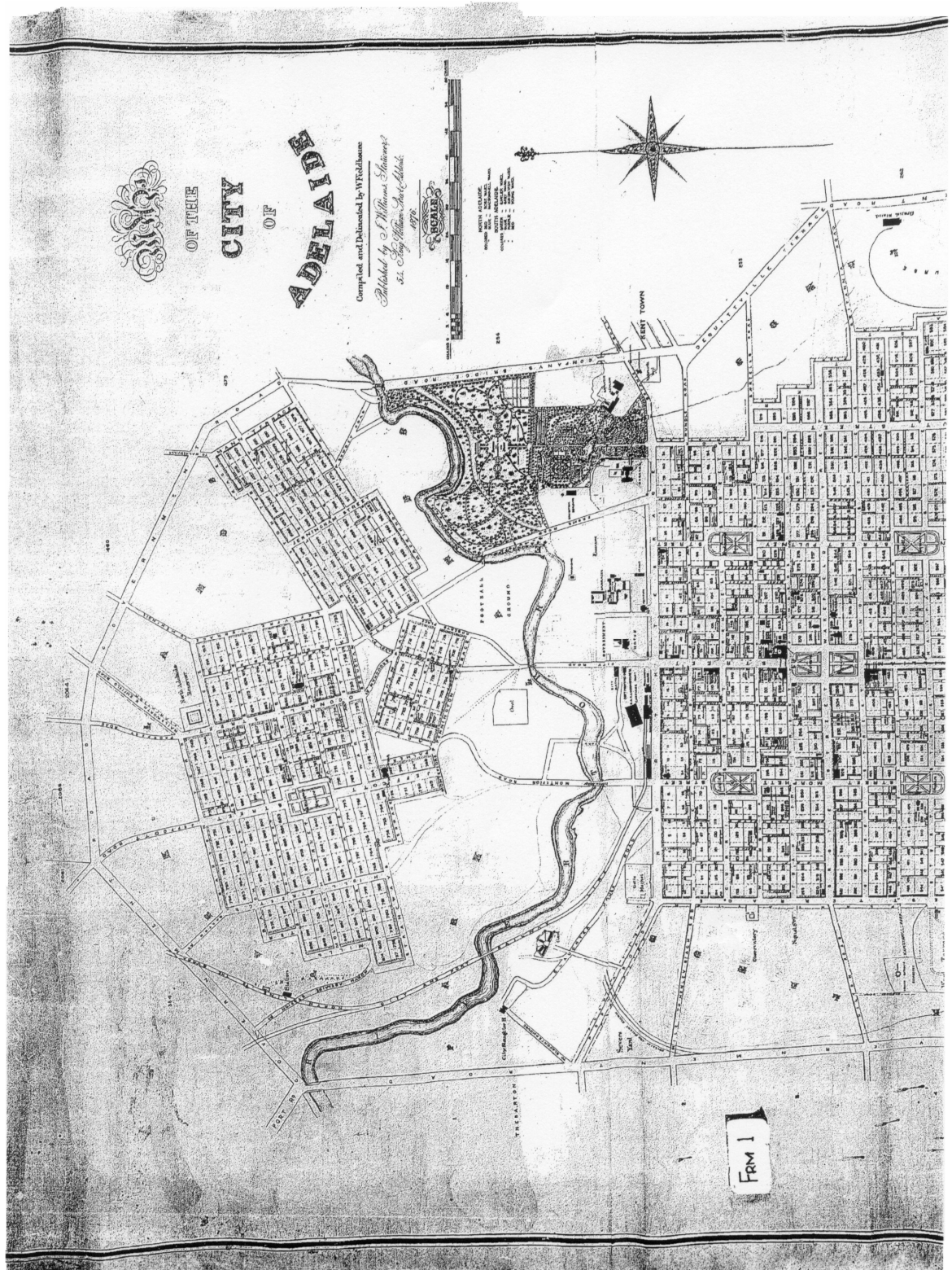
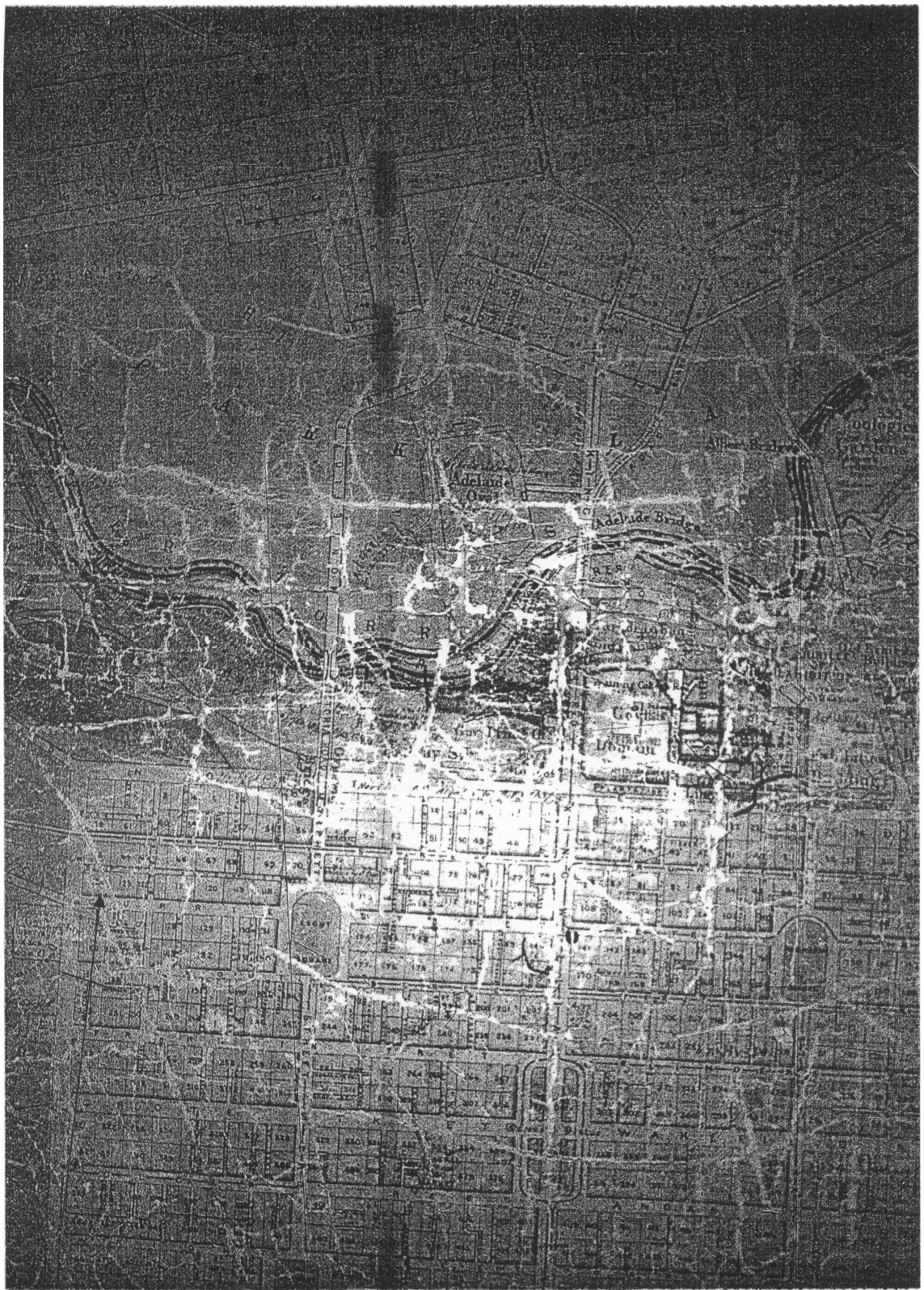


Plate 69 City of Adelaide 1876 (LTO Plan 2023-19)



0 8
Chains

Plate 70 City of Adelaide 1895 (LTO Plan 2023-006)

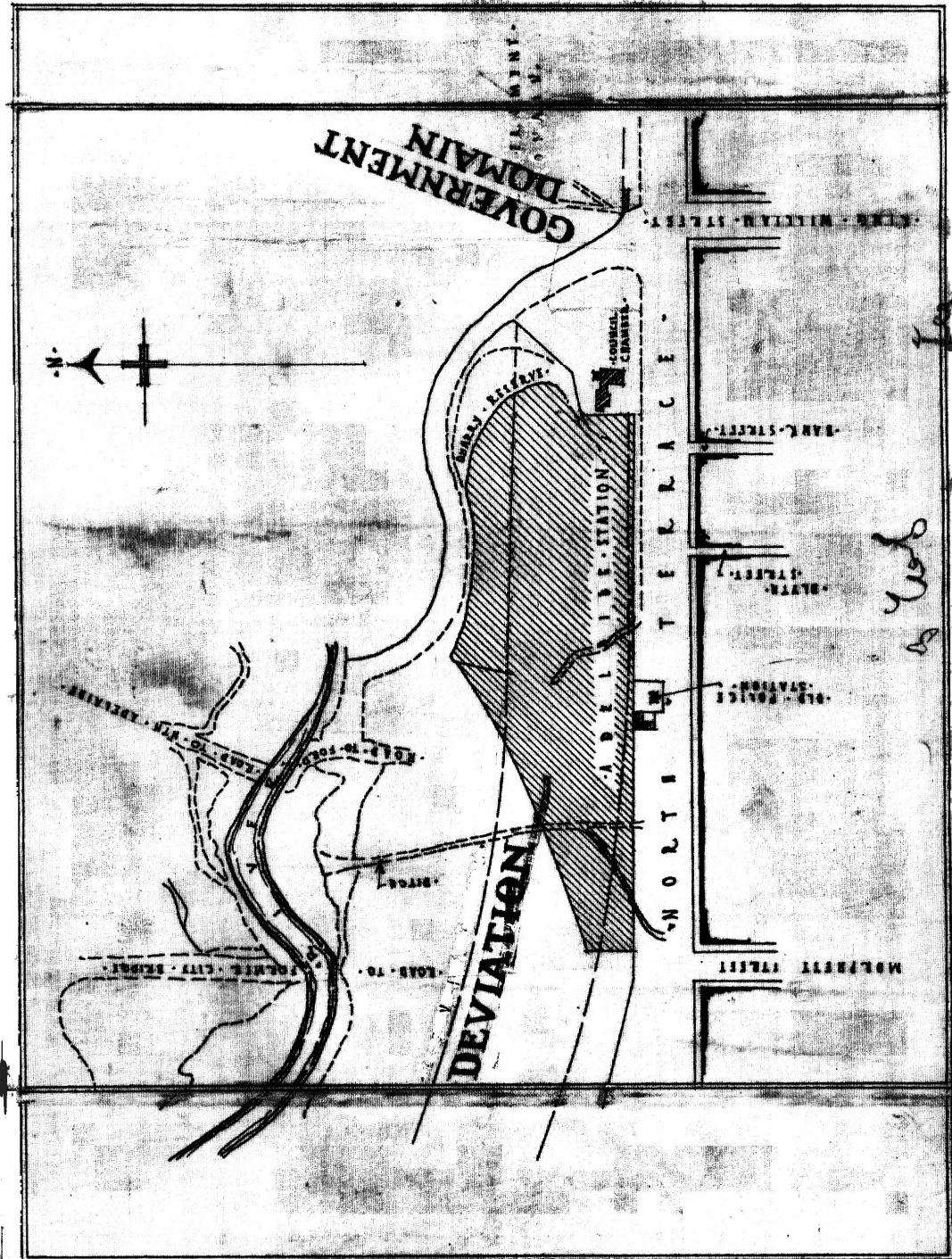


Plate 71 Railway Station Plan and Government Domain 1854 (SAA GRG 38/7/3: 1854)

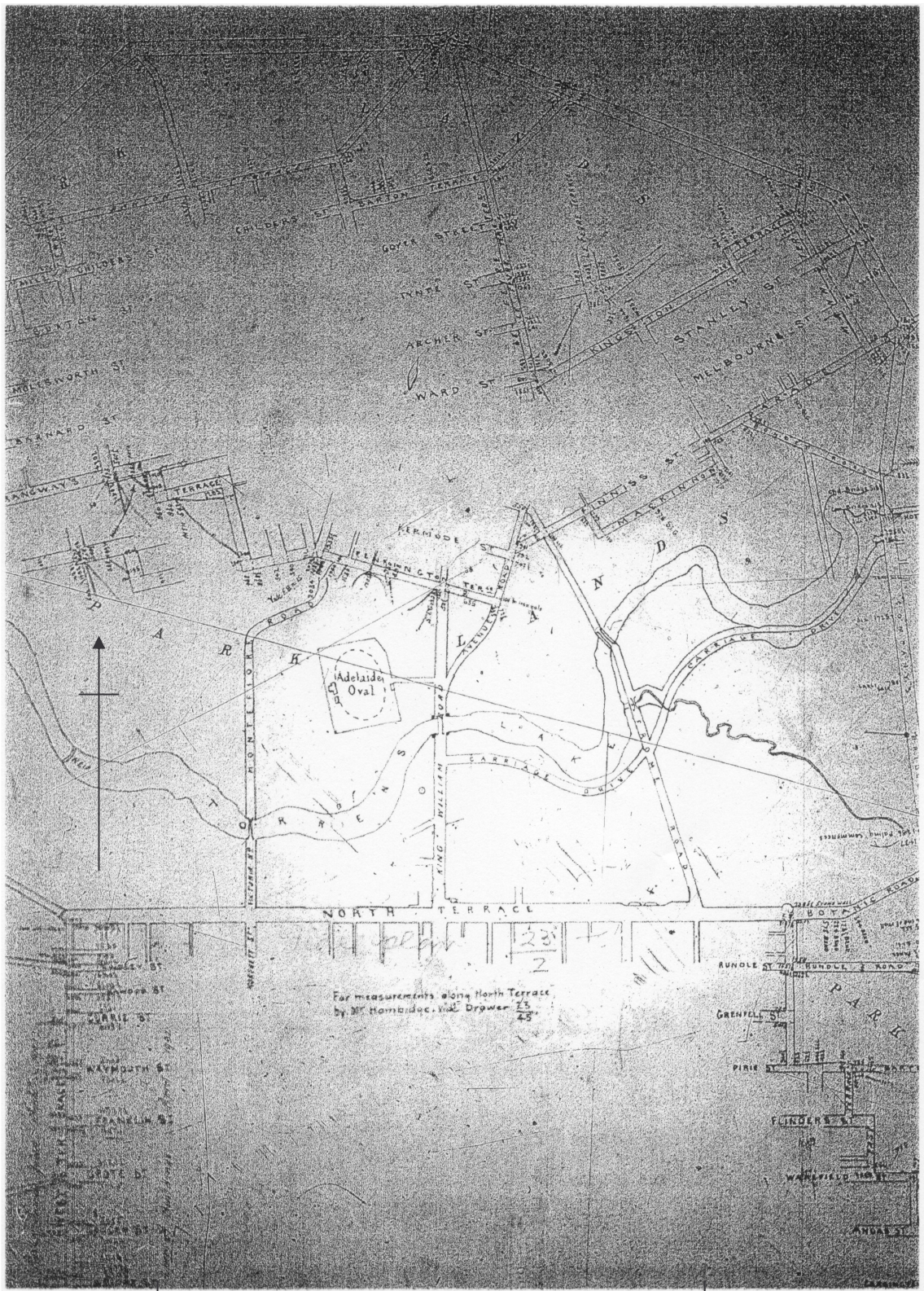


Plate 72 Boundaries of Parklands (LTO Plan 2023-007: 23/26)

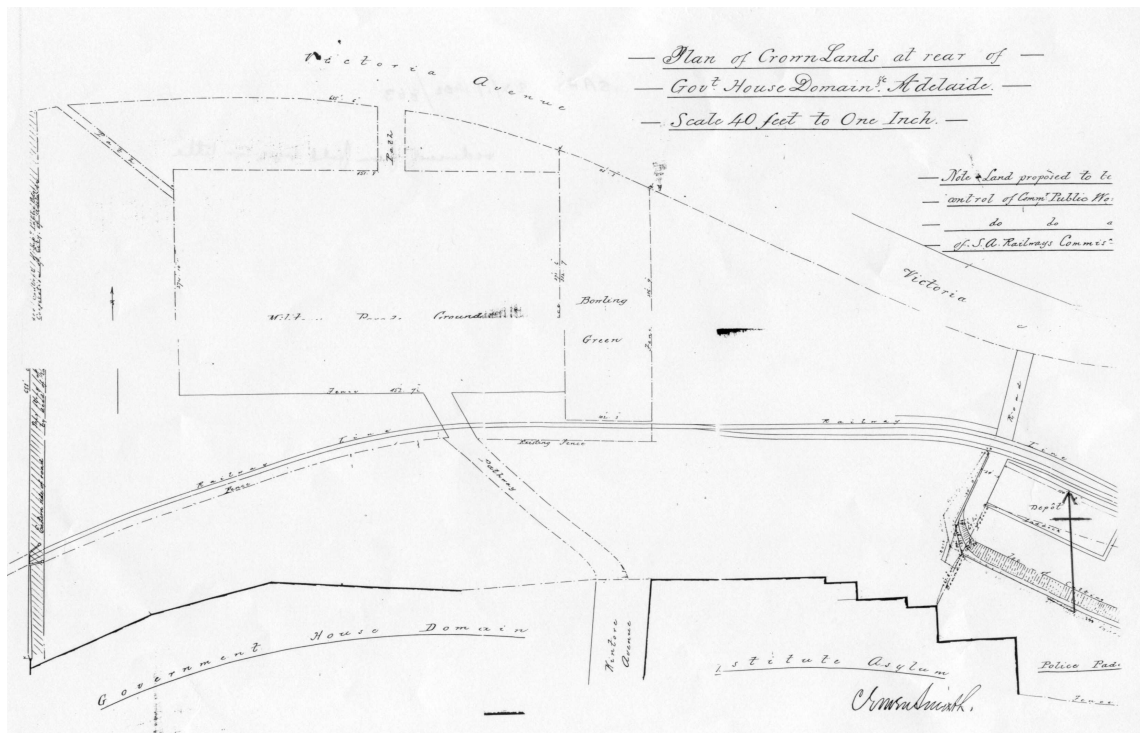


Plate 73 Plan of Crown Lands Including Railway Line North of Government Domain 1902 (SAA 23/1/1902/863)



B 45773

No publication of this image in any form permitted without permission: contact the Maitland Library of South Australia.

Exhibition Building

Departure of the S.A. Bushman's corps for the South African War at the Exhibition grounds

1900

Plate 74 Train on Line Running North of Government House Domain 1900 (MLSA B45773) (Note Tunnel Plate 111: 1876)

DR 23 51

NATIONAL WAR MEMORIAL, ADELAIDE GOVERNMENT HOUSE DOMAIN

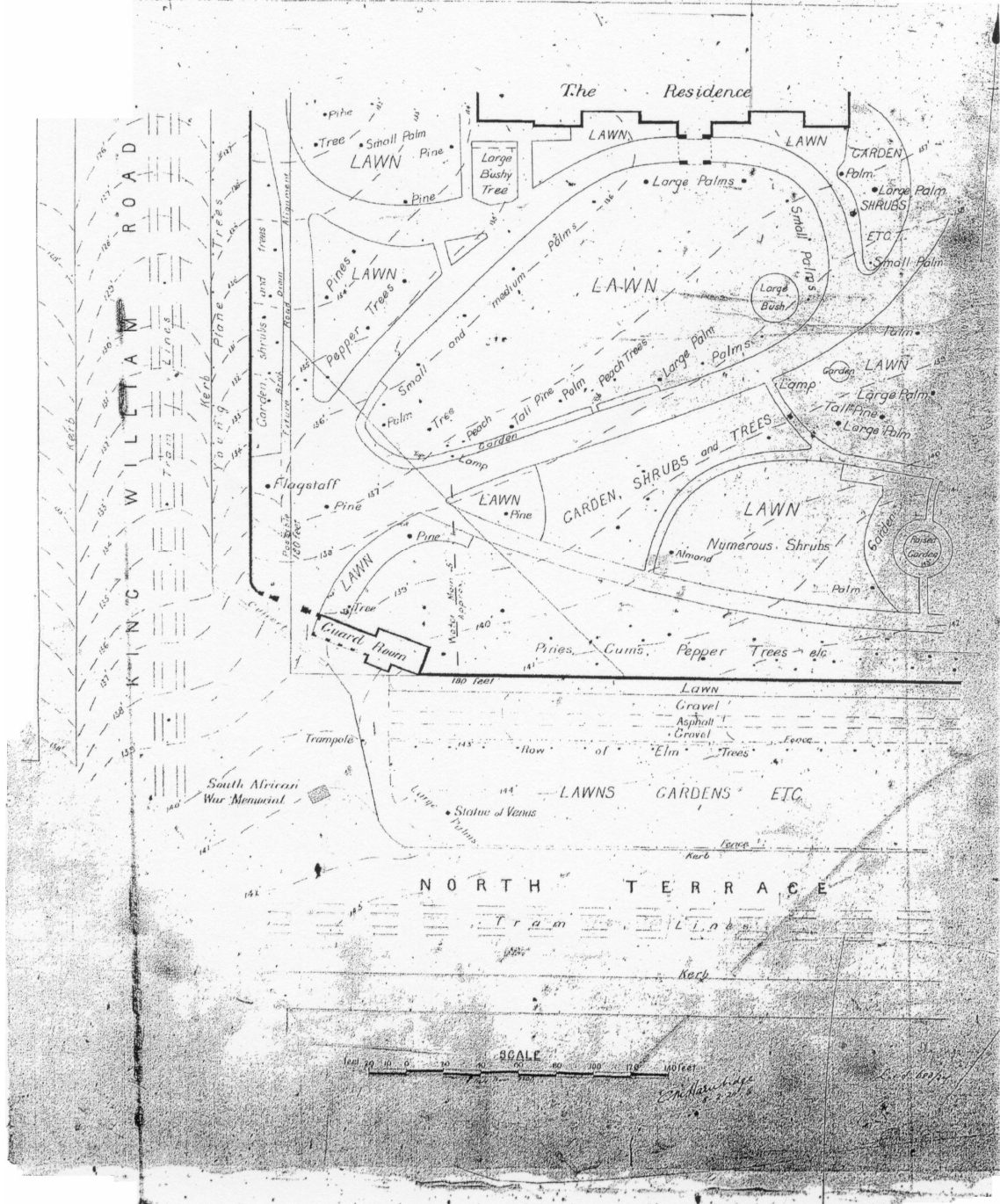
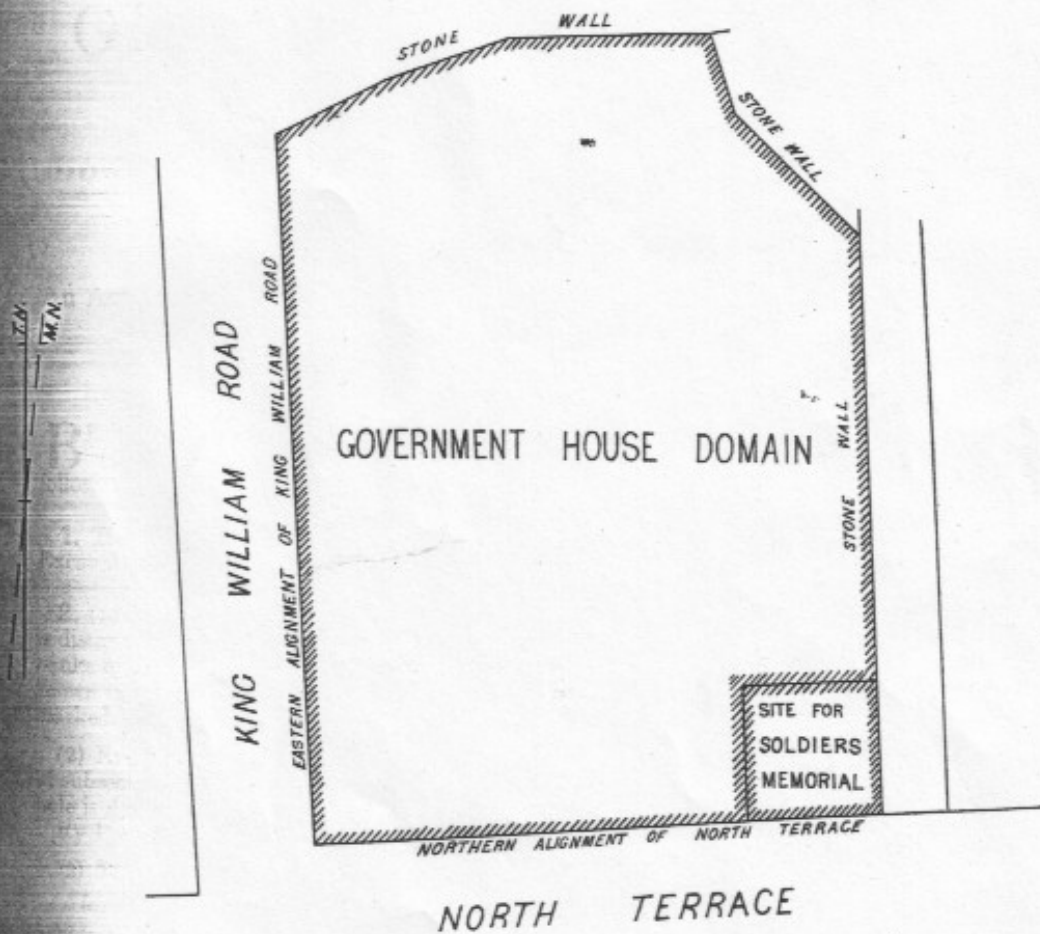


Plate 77 Government House Domain Western Section c1926 (LTO Plan 2023-013: 23/51)

THE SCHEDULE
H^d ADELAIDE
CITY OF ADELAIDE



Thos. E. Day

Surveyor General

Links 100 50 0 SCALE 0 1 2 3 4 5 6 7 8 9 10 Chains
H. E. POWELL GOVERNMENT PHOTOLITHOGRAPHER ADELAIDE

Plate 80 Site on Domain for War Memorial 1927 (SAPP 1927)

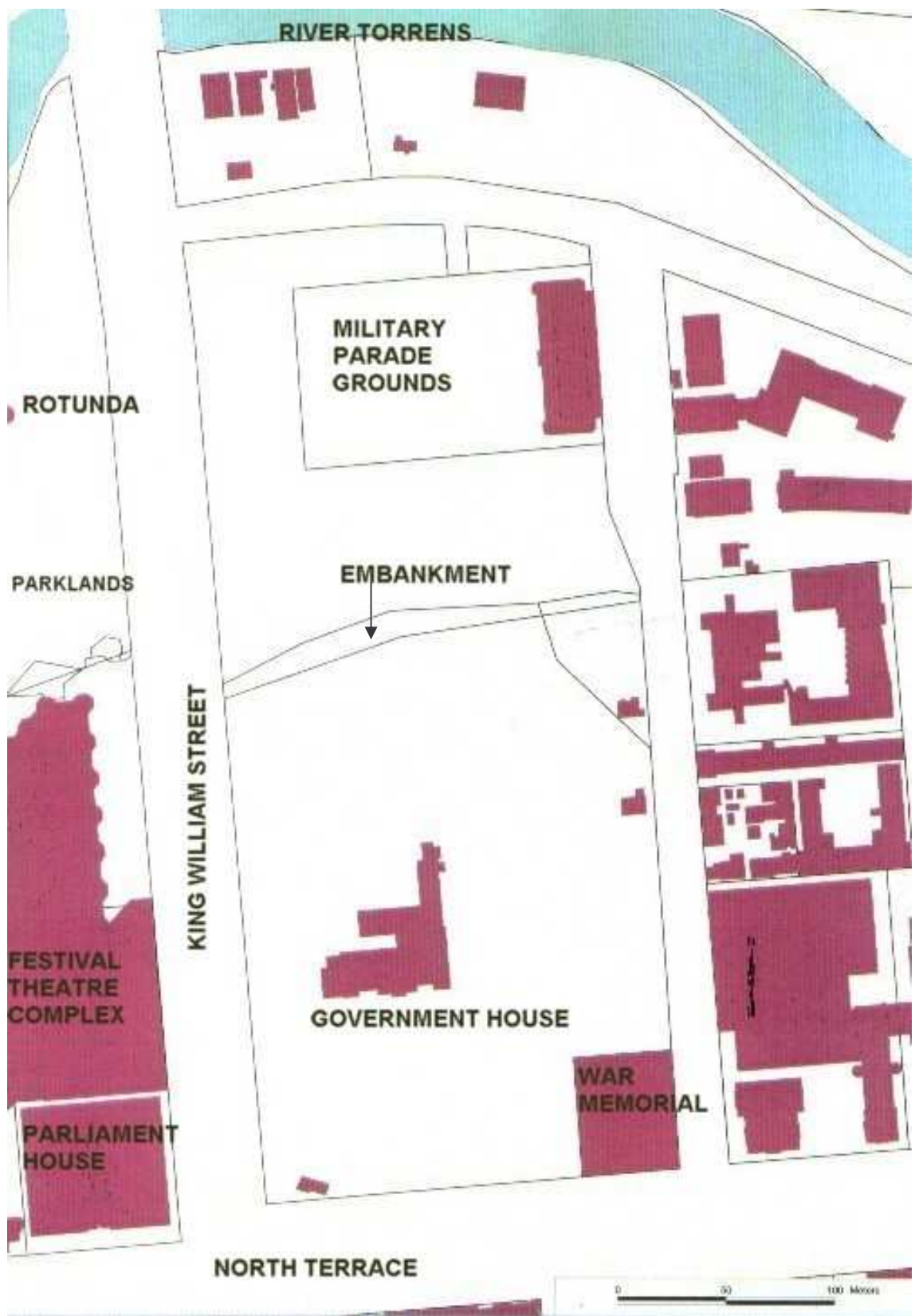


Plate 81 Government Domain c2000, aerial view Footings of Buildings (Adelaide City Council 2000) (See aerial view Plate 114)

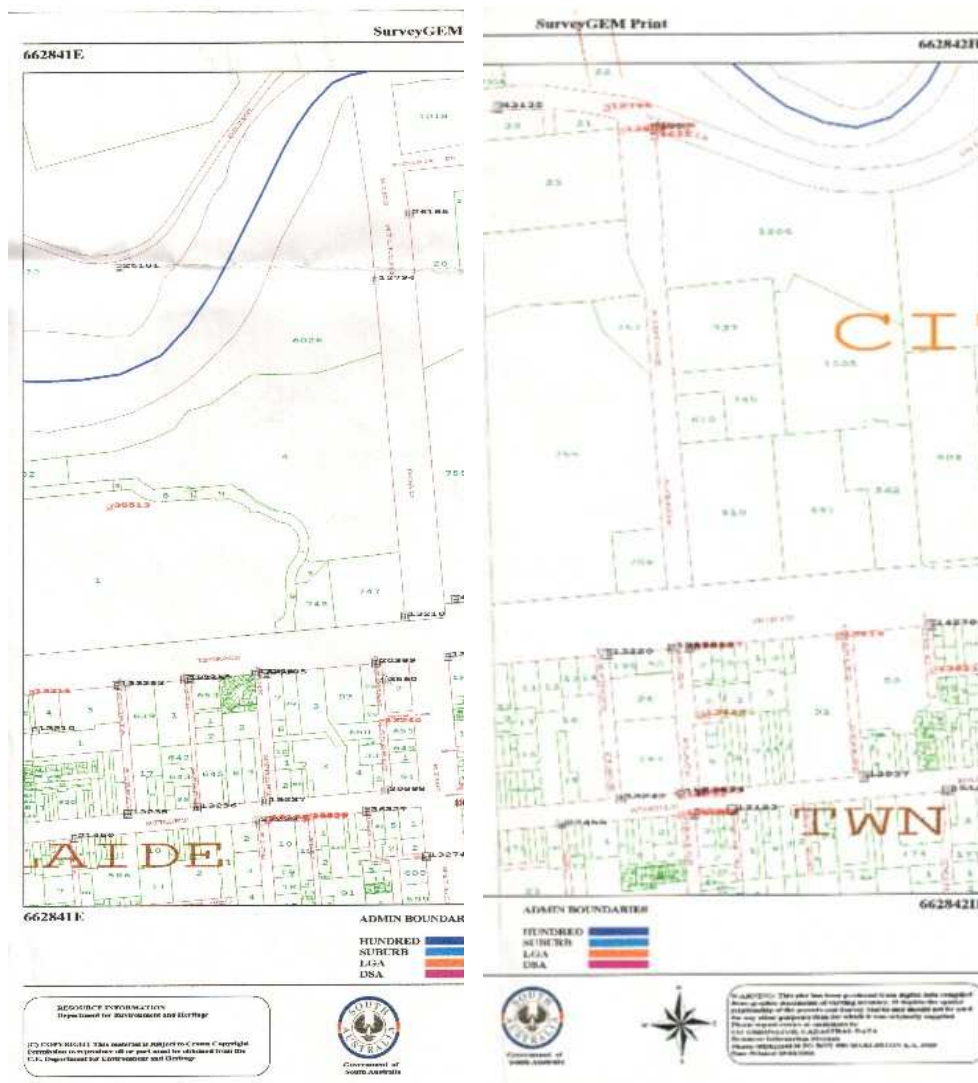


Plate 82 CAD Maps of Domain and Surrounds 2001(662842H has been reduced to try to fit)

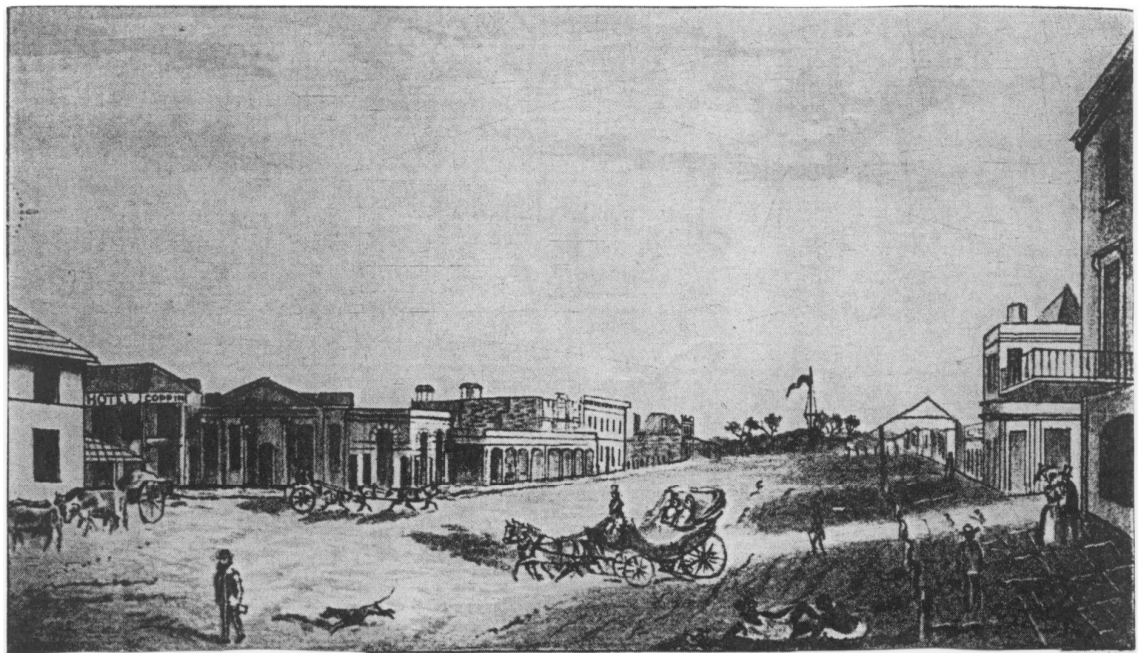


B 2127

No publication of this image in any form permitted without permission: contact the Mortlock Library of South Australiana.

Adelaide and Mount Lofty
ca.1837

Plate 83 Adelaide and Mount Lofty c1837, view to east (MLSA B2127)



King William Street, looking north
From an original sketch by O. Korn, 1840

SA Archives

Plate 84 King William Street c1840, by O Korn (Gill 1968; Manny 1985:32)

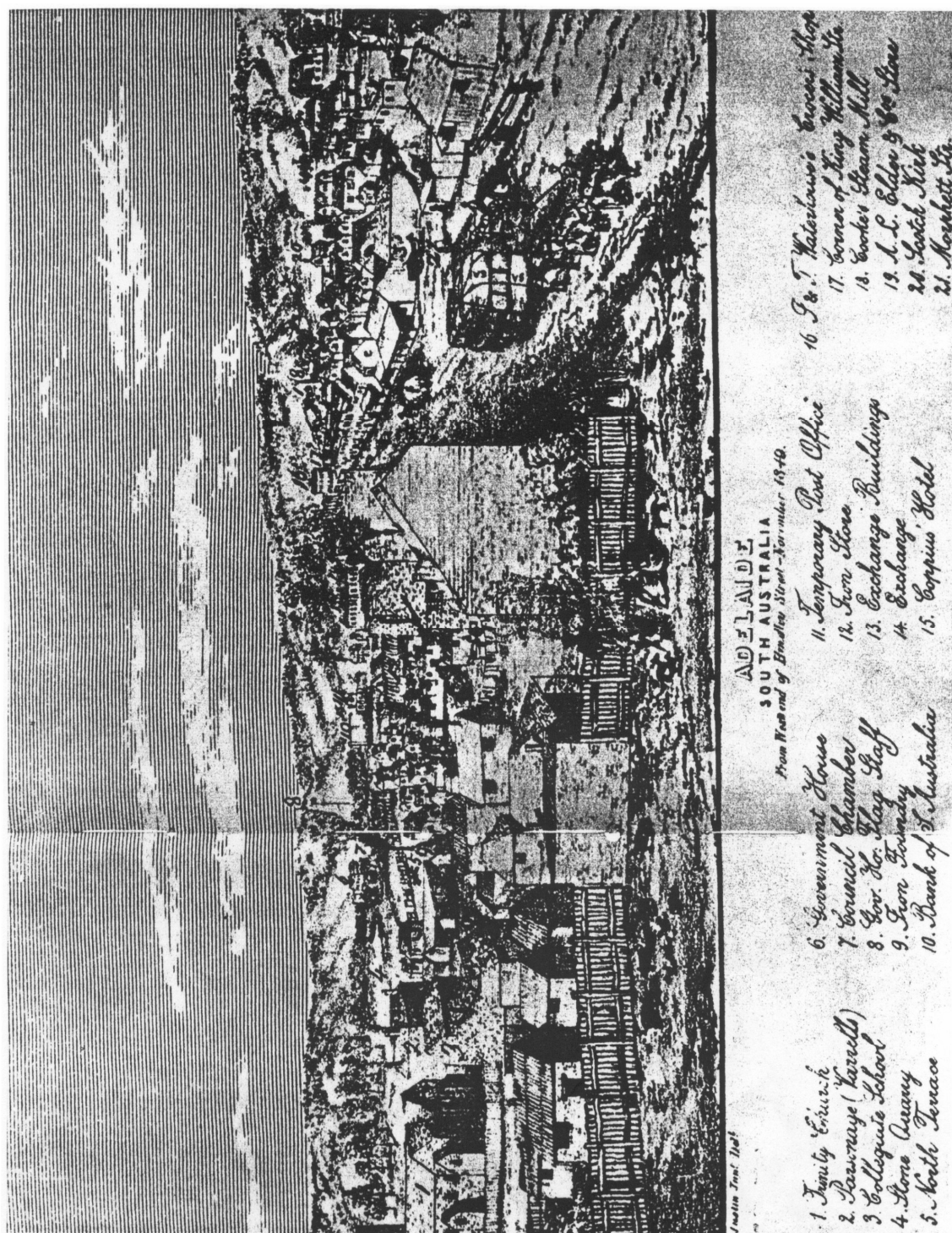


Plate 85 Adelaide c 1840, view east, from west end of Hindley Street (Kerr 1978)



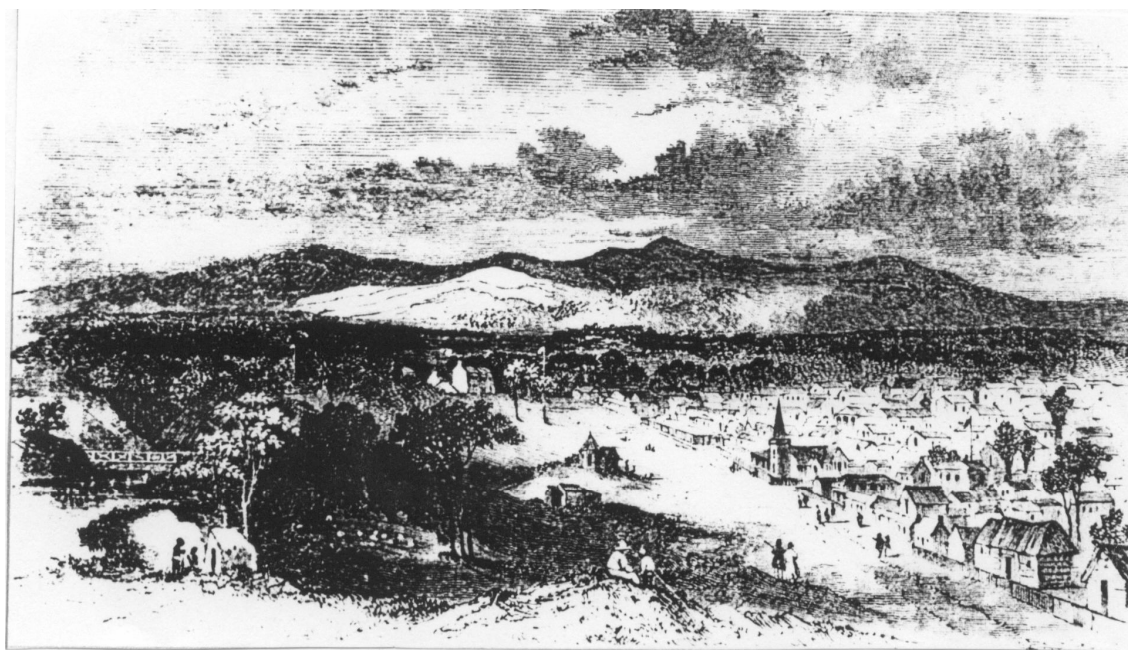
North Terrace

From a sketch by J. C. Hailes 1840

(Hailes was the publisher only. Probably painted by E.A. Opie (See SA News, Nov. 15, 1841, p 54)

1. Old theatre—2. Sidney Hotel—3. Residence of J. Morphett—4. Morphett Street—5. Trinity Church—6. Residence of C.B. Howard, behind which is the infant school—7. South Australian Bank—8. King William Street—9. Post Office—10. Stephens Place—11. South Australian School—12. Bank of Australasia—13. Office of South Australian Record—14. Beck & Co's Warehouse—15. Auction Rooms—16. Wesleyan Church, Gawler Place—17. Congregational Chapel—18. Police Station—19. British Society's School House—20. Government House

Plate 86 North Terrace 1840, by J C Hailes (Manning 1985:30)

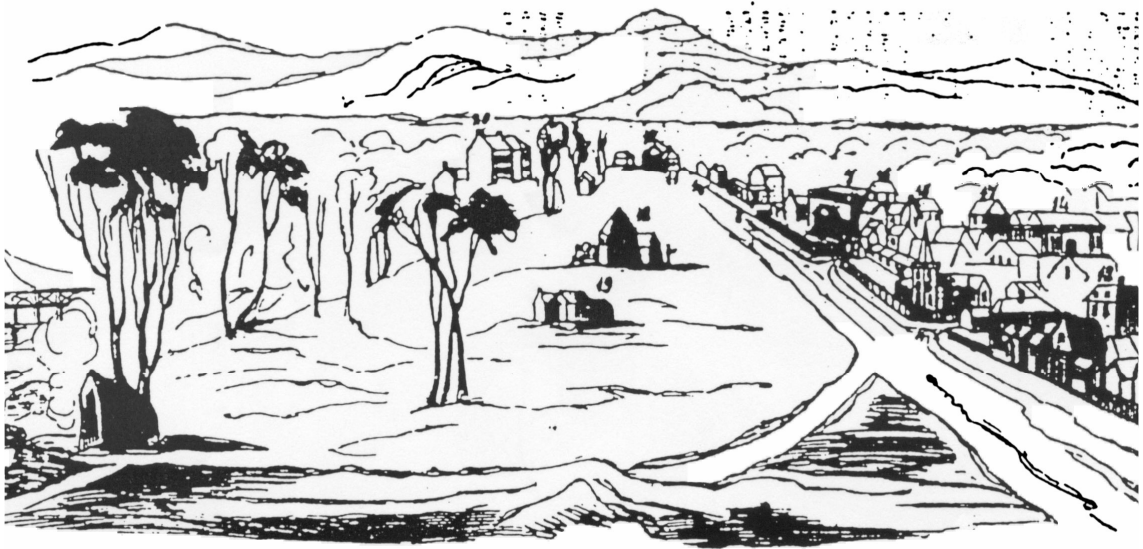


'North Terrace looking east from the west end, about 1841' E. A. Opie Lithograph.
Photograph from Morrison Collection, City Archives, Adelaide.

Plate 87 North Terrace c1841, view southeast, Lithograph by E. A. Opie(Gill 1968)



Plate 88 Coloured Limited Edition of 1841 Drawing (Avon Prints Sydney)



KEY TO THE VIEW OF NORTH TERRACE, published by Mr. J. C. HAILES.

- | | | |
|--|--|--|
| 1. Old Theatre. | 7. South Australian Bank. | 14. Beck and Co's. Warehouses. |
| 2. Sidney Hotel. | 8. King William Street. | 15. Auction Rooms. |
| 3. Residence of J. Morphet, Esq. | 9. Post Office. | 16. Wesleyan Chapel, Gawler Place. |
| 4. Morphet Street. | 10. Stephens' Place. | 17. Congregational Chapel, Rev. T. Q. Stow |
| 5. Trinity Church. | 11. South Australian School. | 18. Police Station. |
| 6. Residence of Rev. C. B. Howard, behind
which is the Infant School. | 12. Bank of Australasia. | 19. British Society's School House. |
| | 13. Office of South Australian Record. | 20. Government House. |

Plate 89 Key to Buildings in Drawing of North Terrace c1841 (Kent 1978:102)

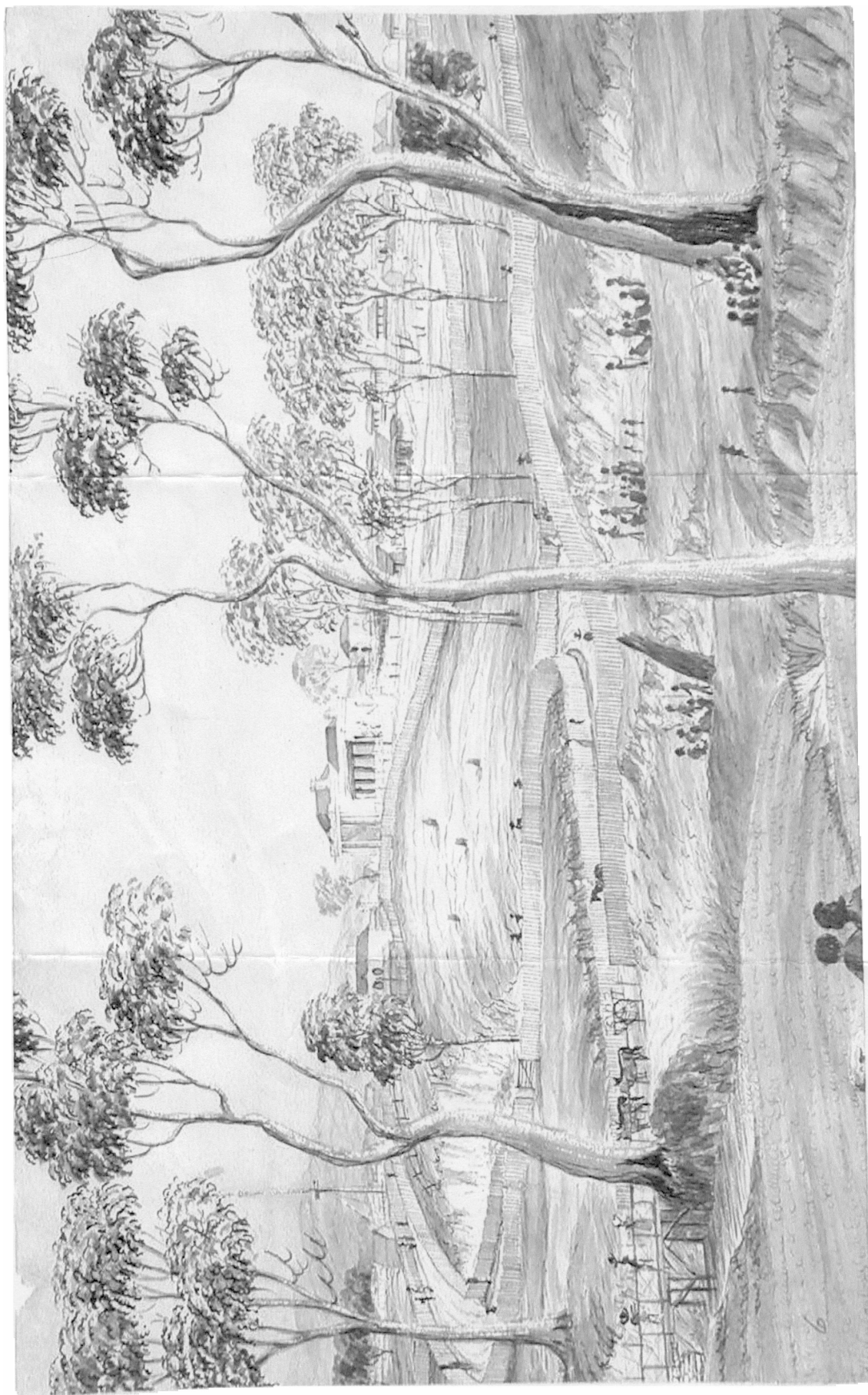


Plate 90 Adelaide c1842, view to southeast by R Davenport (SA Art Gallery 0.717; Manning 1985:39)

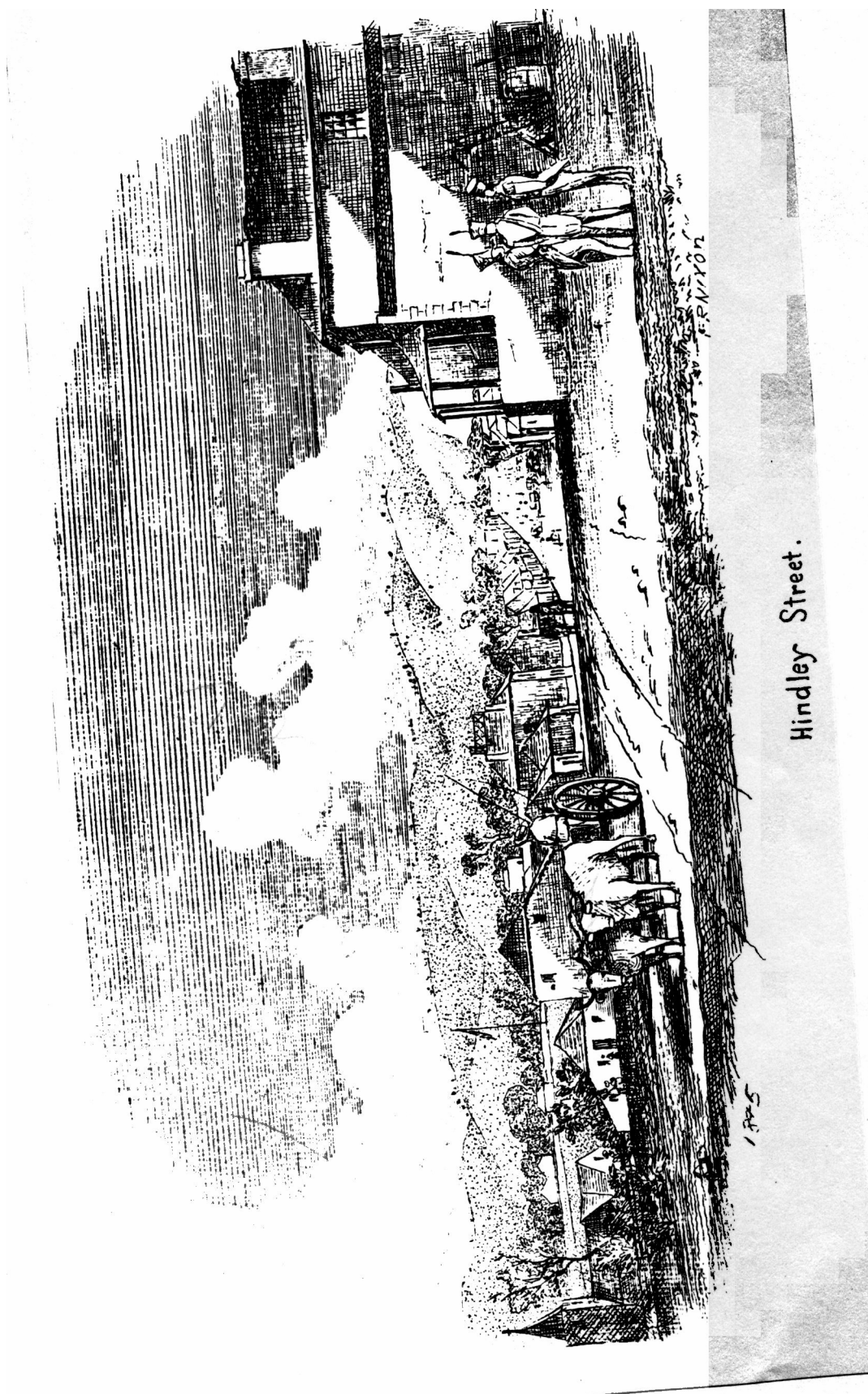


Plate 91 Hindley Street c1845, view to east, Government House Flag Pole in left mid distance, by F R Nixon (Gill 1968)

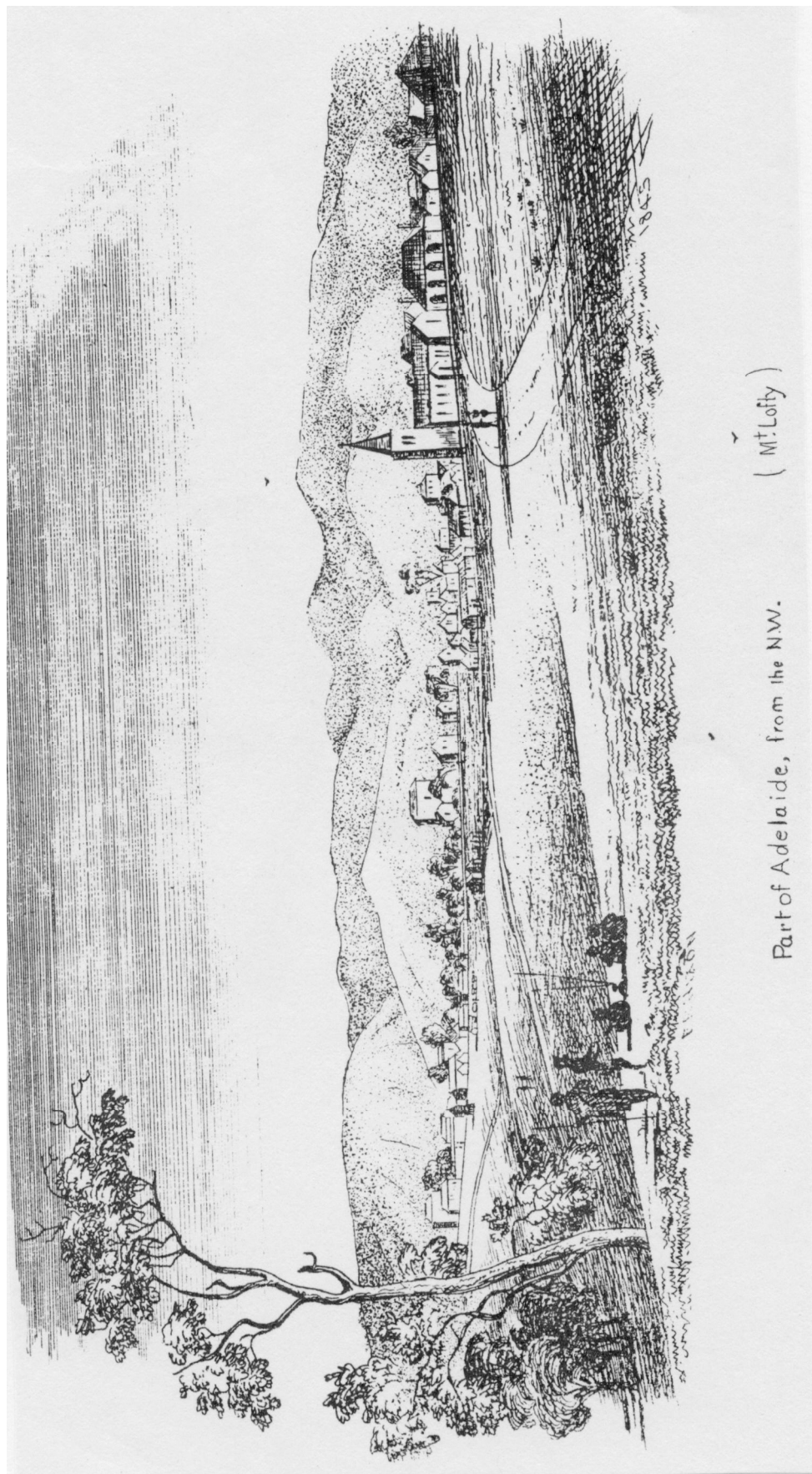
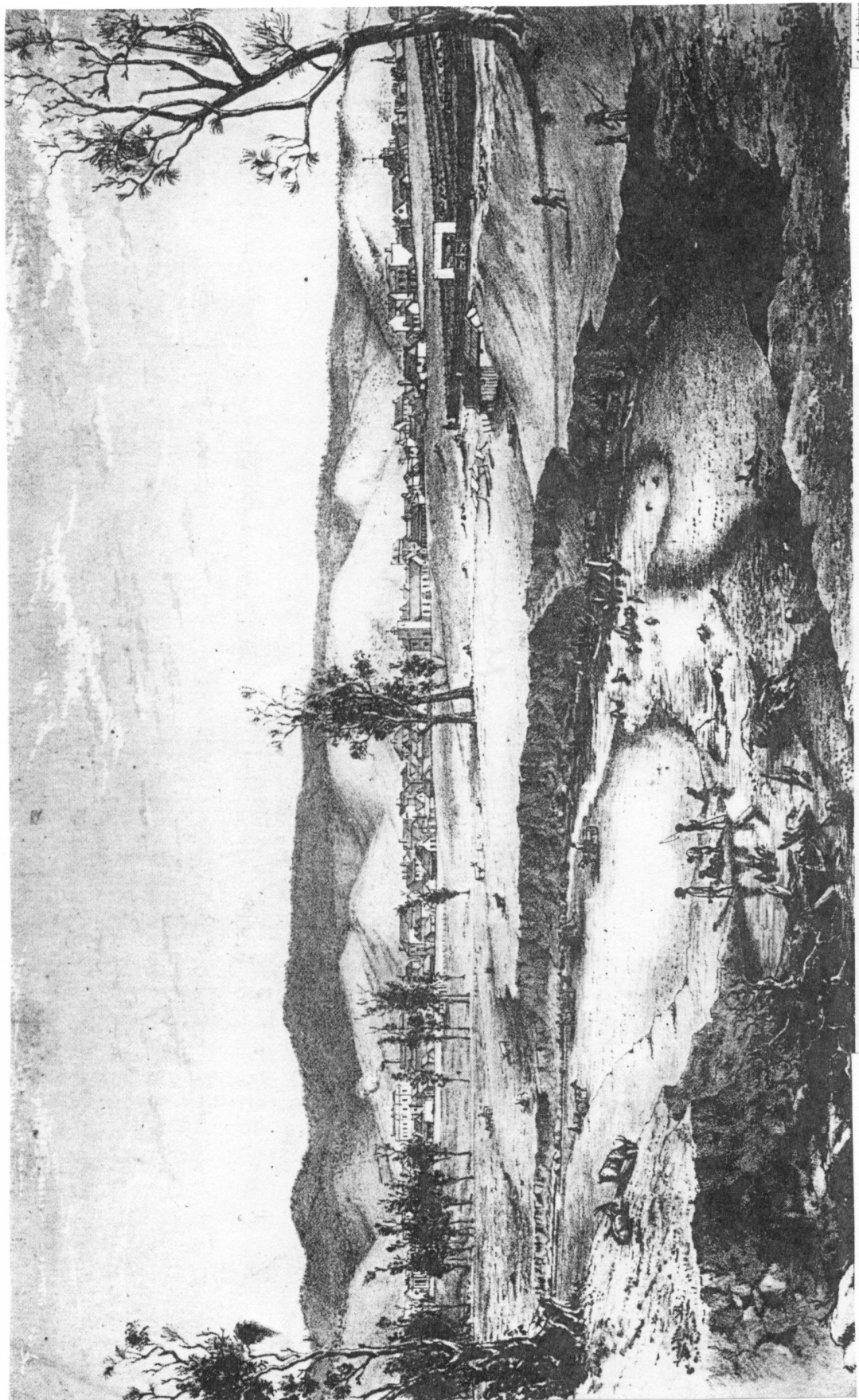


Plate 92 Adelaide c1845, view southeast, by F R Nixon, Trinity Church mid right (Gill 1968)



Plate 93 Adelaide 1845, view to southeast, by F R Nixon, Trinity Church mid right (Note comment on Indigenous) (Thiele 1982)



SA Archives

City of Adelaide c1849 looking south-east showing Newmarket stockyards right centre

Plate 94 City of Adelaide c1849, view to southeast, Trinity Church mid centre (Manning 1985:96)



B 45433

No publication of this image in any form permitted without permission: contact the Mortlock Library of South Australiana.

North Terrace
ca.1850

Plate 95 North Terrace c1850, view to east (MLSA B45433)

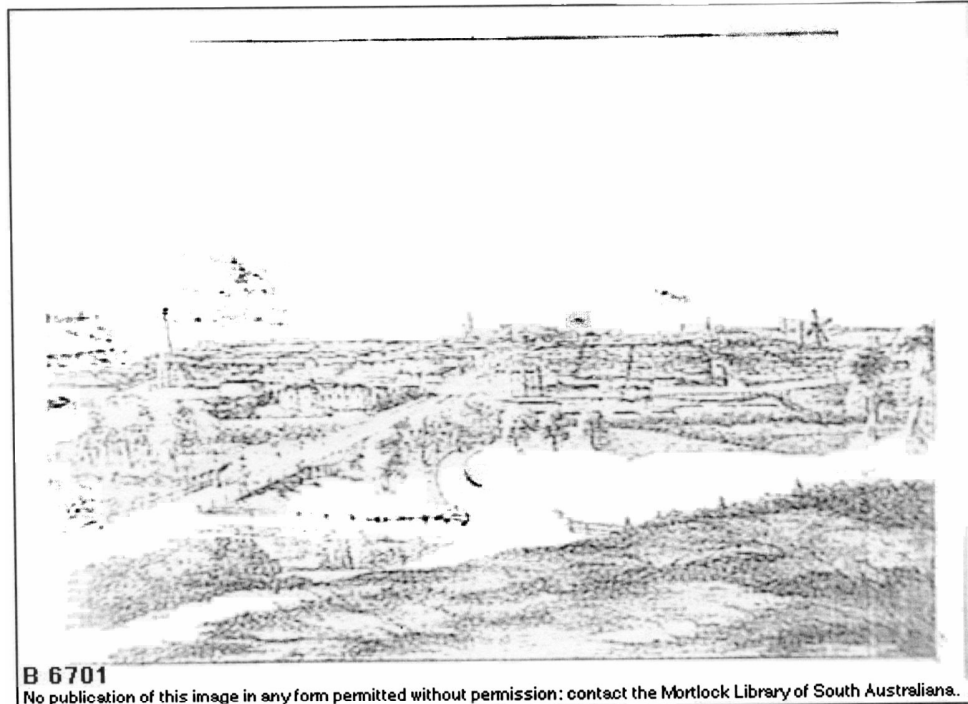


B 1121

No publication of this image in any form permitted without permission: contact the Mortlock Library of South Australiana.

Adelaide from Montefiore Hill
View of Adelaide from Montefiore Hill
ca.1860

Plate 96 Adelaide c1860, view to southeast from Montefiore Hill (MLSA B1121)



Adelaide

Panoramic view of Adelaide

ca.1860

Plate 97 Adelaide c1860, view to southeast, Government Mill mid right (MLSA B6701)



Adelaide View

View of Adelaide from the Town Hall Tower

1865

Plate 98 Adelaide 1865, view to north from Town Hall Tower on the east side of King William Street (MLSA B5099/15)

James Shaw (Australian, 1815-1881) Adelaide from Montefiore Hill, 1865-7. Lithograph, 37.8 x 52.7cm. Gift of His Honour Mr. President Morgan, 1948
COLLECTION: ART GALLERY OF SOUTH AUSTRALIA

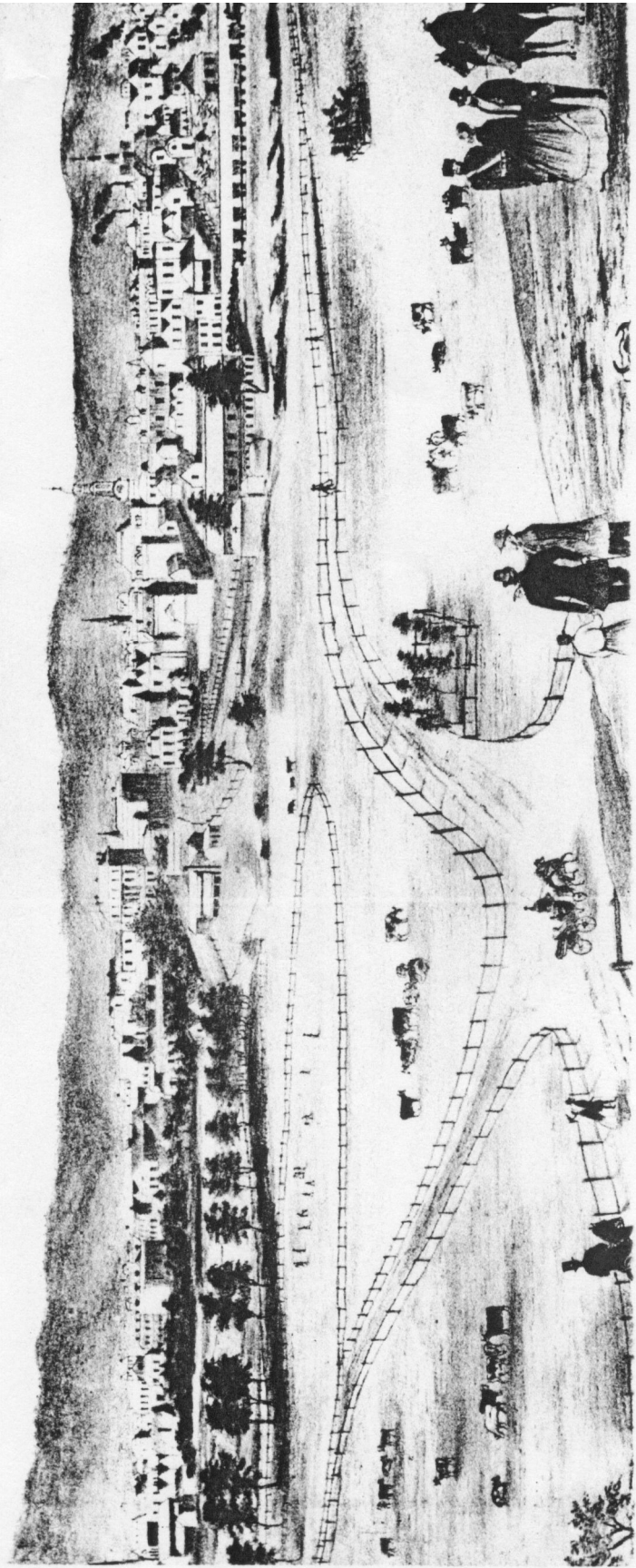


Plate 99 Adelaide 1865-7, view to east from Montefiore Hill, by James Shaw (Thiele 1982)

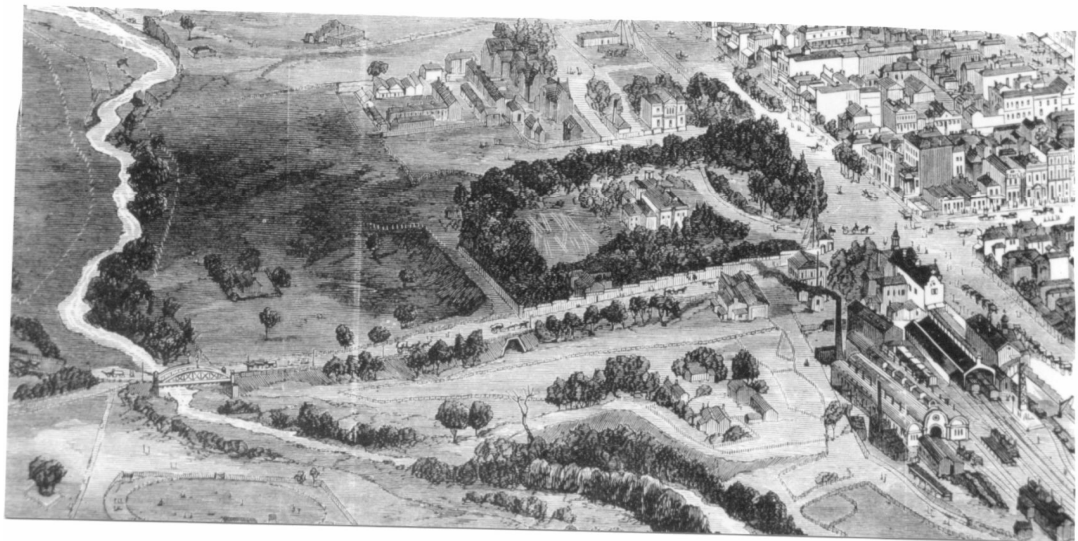
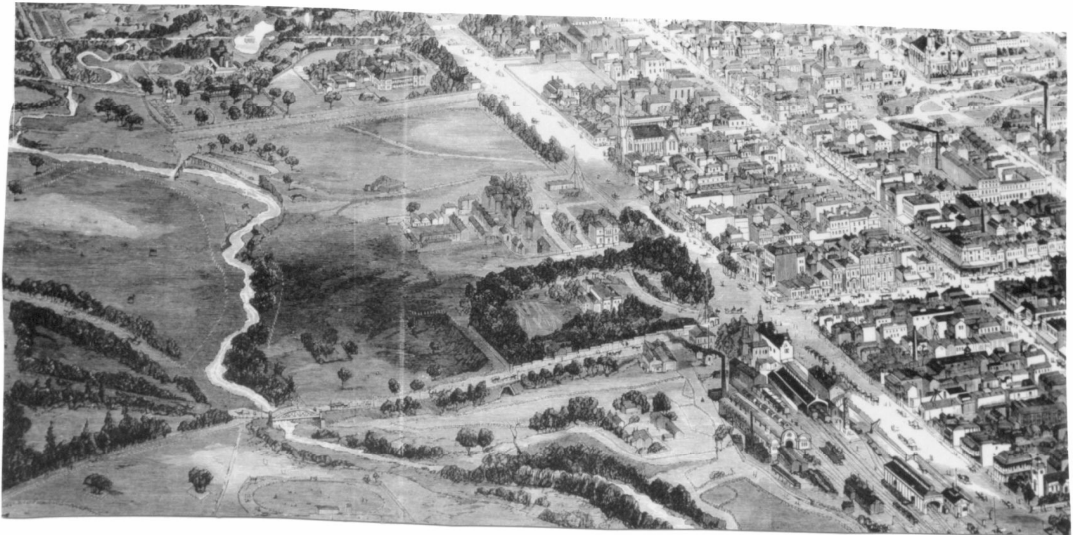


Plate 100 Adelaide c1876, view to east, Government House and Tunnel mid centre, (The Illustrated Sydney News July 1876)



Plate 101 Key to view of Adelaide from Lithograph 1876



B 8013

No publication of this image in any form permitted without permission: contact the Mortlock Library of South Australians.

Adelaide View

Aerial view of Adelaide

1931



Plate 103 Adelaide c1960s, view to south, King William St. centre, Peppertree Cottage and Government House on left
Parliament House, City Baths, Rotunda, Sound Shell, and Railway Station on right
(Paul Hamlyn Group Products, "Know Your Cities" – Jigsaw Puzzle, Series 1, Adelaide)

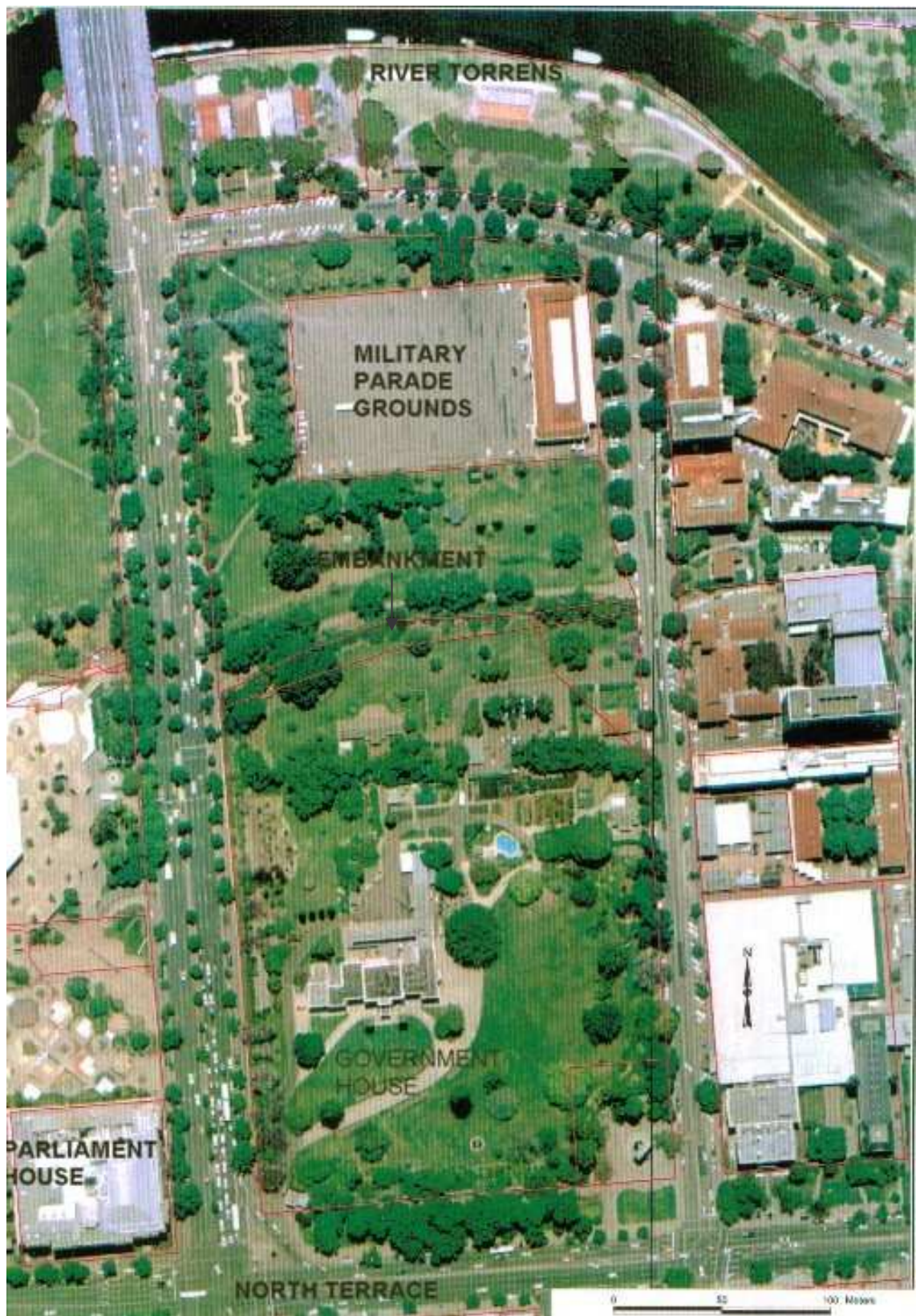


Plate 104 Government Domain and Surrounds c2000, aerial view (Adelaide City Council)



B 10504

No publication of this image in any form permitted without permission: contact the Mortlock Library of South Australiana.

North Terrace, West

North Terrace, west of King William Street. Looking south from the Parklands near the Torrens.

1838

Plate 105 North Terrace 1838, view to south, Bank? mid centre (MLSA B10504)



B 15276/1

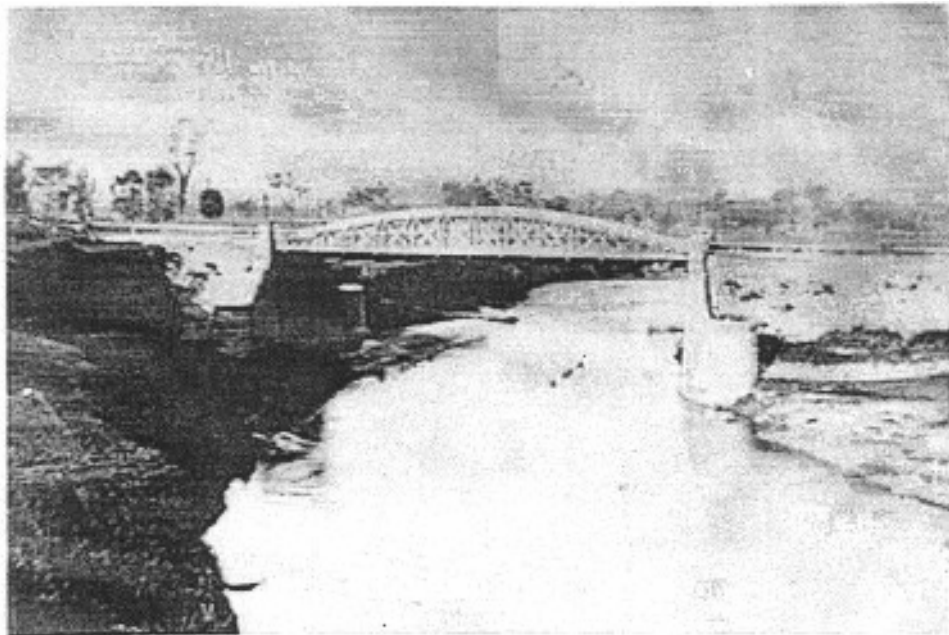
No publication of this image in any form permitted without permission: contact the Mortlock Library of South Australiana.

City of Adelaide

City of Adelaide from the Torrens

ca.1844

Plate 106 Adelaide from River Torrens c1844, view to east (MLSA B15276/1)



B 41286

No publication of this image in any form permitted without permission: contact the Mortlock Library of South Australia.

Original Adelaide City Bridge

The original Adelaide City Bridge.

1860

Plate 107 City Bridge 1860, view to east (MLSA B41206)



B 41287

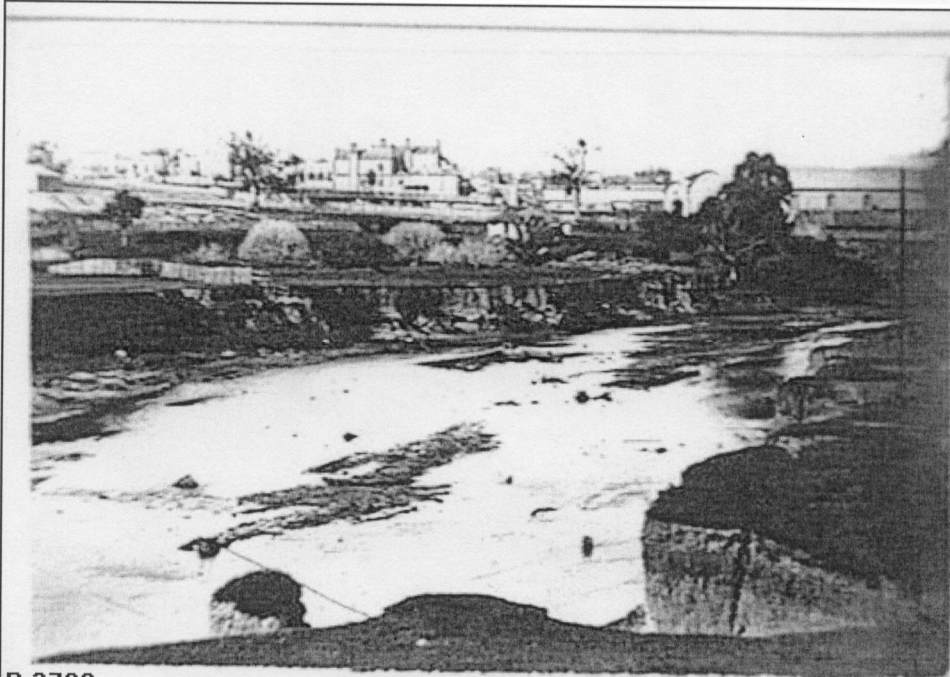
No publication of this image in any form permitted without permission: contact the Mortlock Library of South Australia.

Original Adelaide City Bridge

The original Adelaide City Bri

1860

Plate 108 City Bridge 1860, view to west (MLSA B41287)



B 2780

No publication of this image in any form permitted without permission: contact the Mortlock Library of South Australia.

River Torrens

River Torrens looking Southwest towards railway sheds. Parliament House in the distance.

ca.1860

Plate 109 River Torrens c1860, view to southwest (MLA B2780)



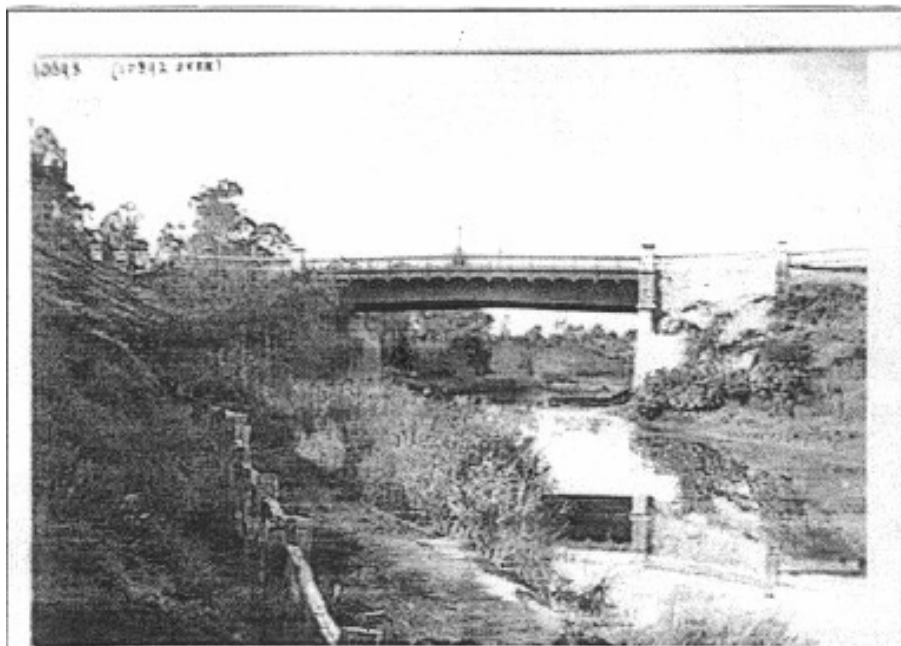
B 41738

No publication of this image in any form permitted without permission: contact the Mortlock Library of South Australia.

Torrens Dam

ca.1865

Plate 110 River Torrens from the Dam c1865, view to southeast (MLA B41738)



B 10393

No publication of this image in any form permitted without permission: contact the Murllock Library of South Australia.

Adelaide Bridge

Adelaide Bridge, King William Road

ca.1877

Plate 111 Adelaide Bridge c1877, view to east, replaced the City Bridge (MLSA B10393)



B 7199

No publication of this image in any form permitted without permission: contact the Murllock Library of South Australia.

Adelaide Bridge

Adelaide Bridge in about 1877.

ca.1877

Plate 112 Adelaide Bridge c1877, view to south (MLSA B7199)



B 36282

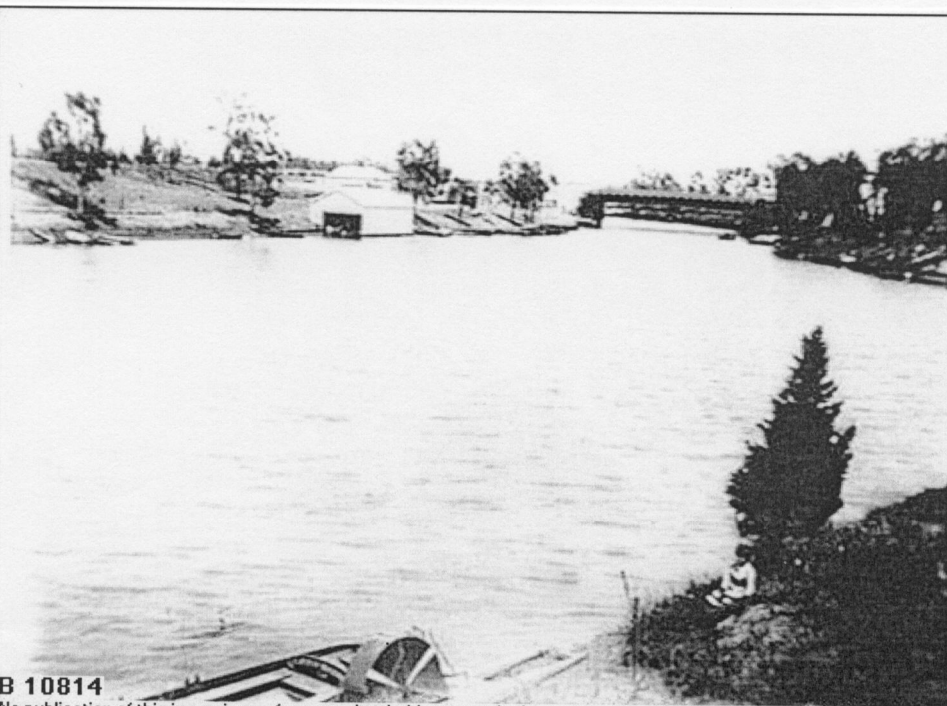
No publication of this image in any form permitted without permission: contact the Mortlock Library of South Australia.

Torrens Weir

Torrens Weir, looking east.

ca.1880

Plate 113 Torrens Weir c1880, view to east (MLSA B36282)



B 10814

No publication of this image in any form permitted without permission: contact the Mortlock Library of South Australia.

River Torrens

Looking West from a point East of the Adelaide Bridge

ca.1881

Plate 114 River Torrens and Adelaide Bridge c1881, view to west (MLSA B10814)



B 3124

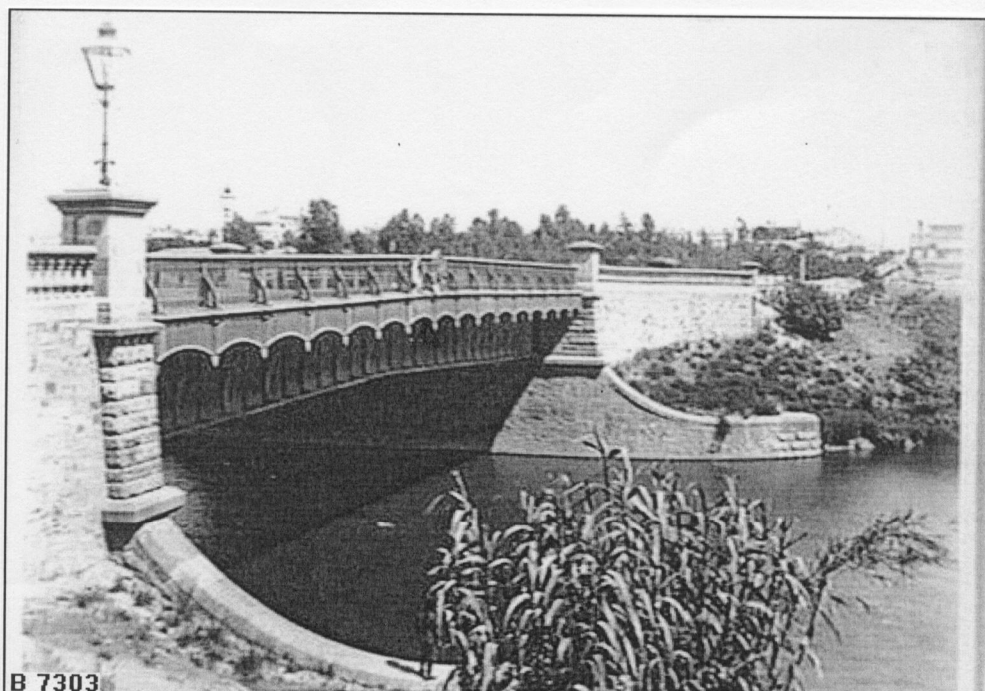
No publication of this image in any form permitted without permission: contact the Mortlock Library of South Australia.

Elder Park

King William Road, Elder Park

ca.1882

Plate 115 King William Road and Elder park c1882, view to northwest (MLSA B3124)



B 7303

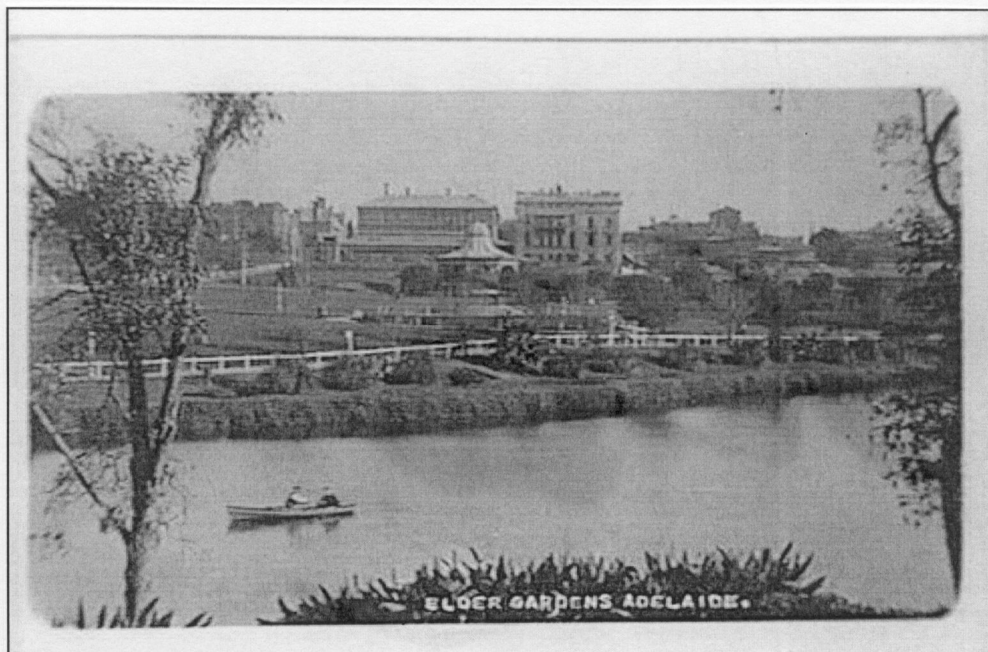
No publication of this image in any form permitted without permission: contact the Mortlock Library of South Australia.

Adelaide Bridge

Adelaide Bridge, King William Road, looking south

ca.1884

Plate 116 Adelaide Bride c1884, view to southeast (MLSA B7303)



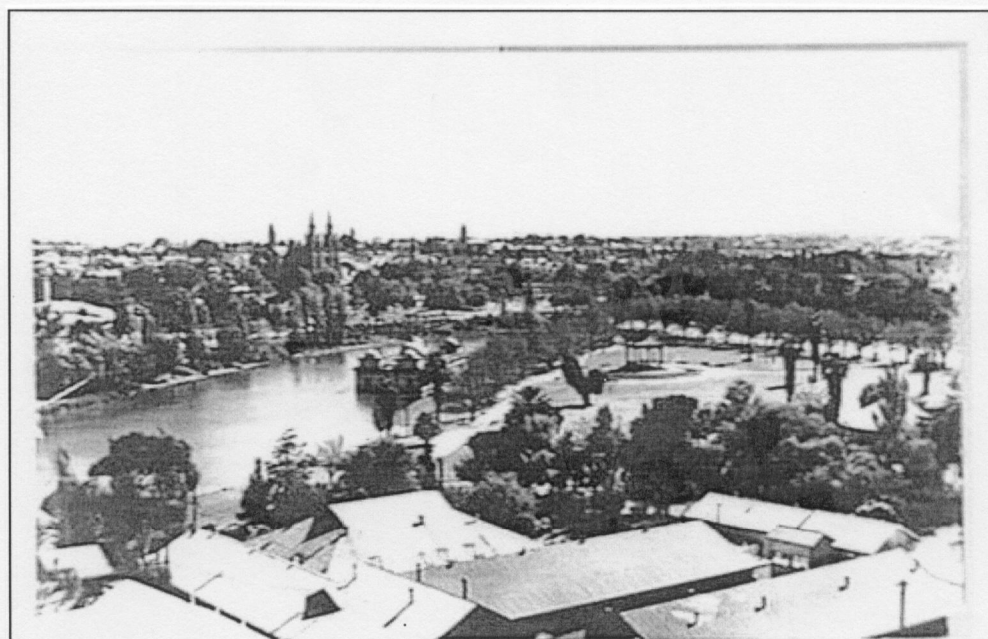
B 21514

No publication of this image in any form permitted without permission: contact the Mortlock Library of South Australians.

Elder Park

ca.1915

Plate 117 Elder Park c1915, view to south, Rotunda mid centre (MLSA B21514)



B 4511

No publication of this image in any form permitted without permission: contact the Mortlock Library of South Australians.

Elder Park

Torrens Lake and the Floating Palais

1929

Plate 118 Torrens Lake and Floating Palais 1929, view to northeast, Rotunda mid right (MLSA B4511)



B 5508

No publication of this image in any form permitted without permission: contact the Marjorie Library of South Australia.

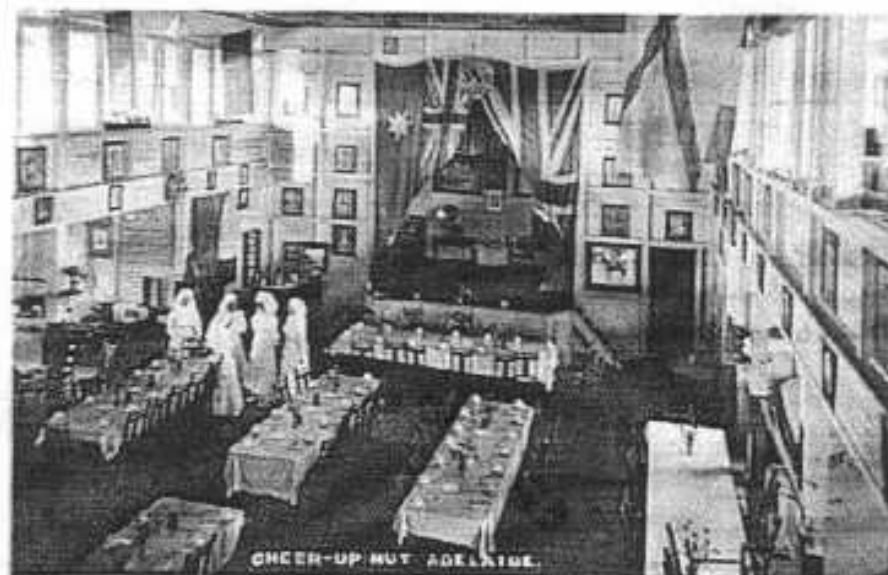
Cheer Up Hut

Cheer Up Hut, Adelaide showing the billiard room, December 24 th., 1919

1919

Plate 119 Cheer Up Hut Adelaide 1919, Billiard Room (MLSA B5508)

East end was 88 yards from King William St the west end was 132 yards



B 5505

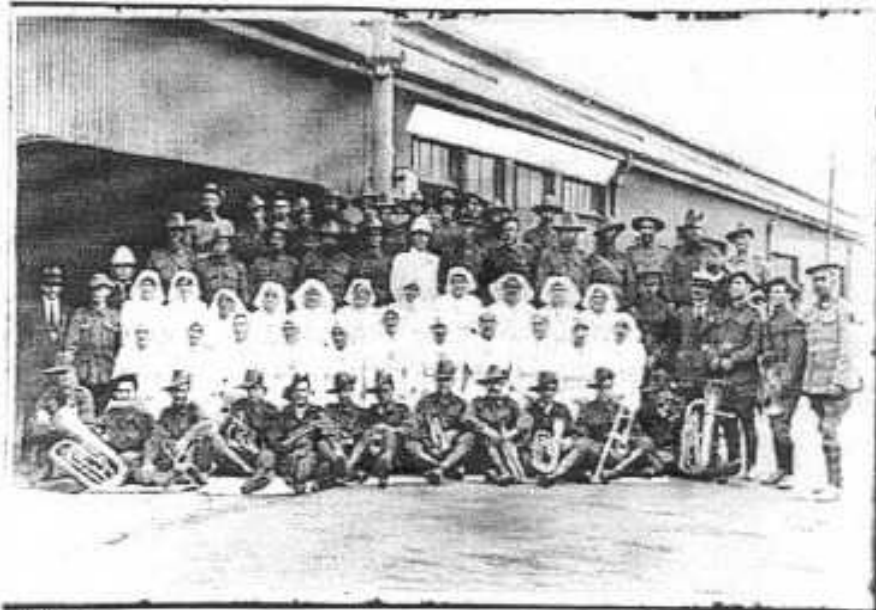
No publication of this image in any form permitted without permission: contact the Marjorie Library of South Australia.

Cheer Up Hut

Cheer Up Hut, Adelaide : interior view, 18th December 1919

1919

Plate 120 Cheer Up Hut, Interior 1919 (MLSA B5505)



B 20460

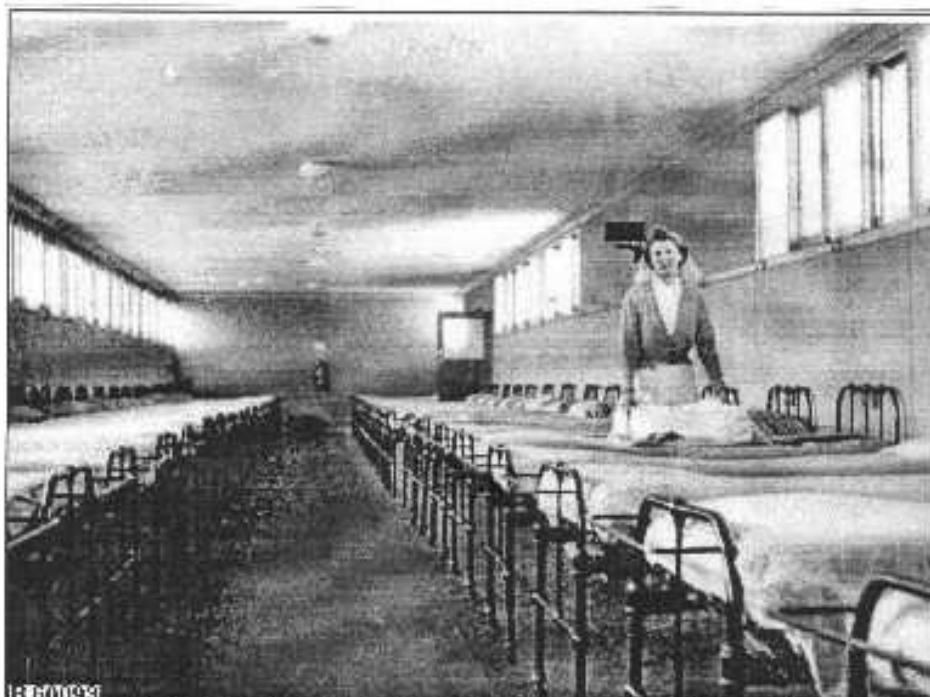
No publication of this image in any form permitted without permission; contact the Mortlock Library of South Australia.

Cheer Up Society

Soldiers and ladies of the Cheer Up Society

ca. 1920

Plate 121 Cheer Up Hut Adelaide Exterior 1920 (MLSA B20460)



B 60099

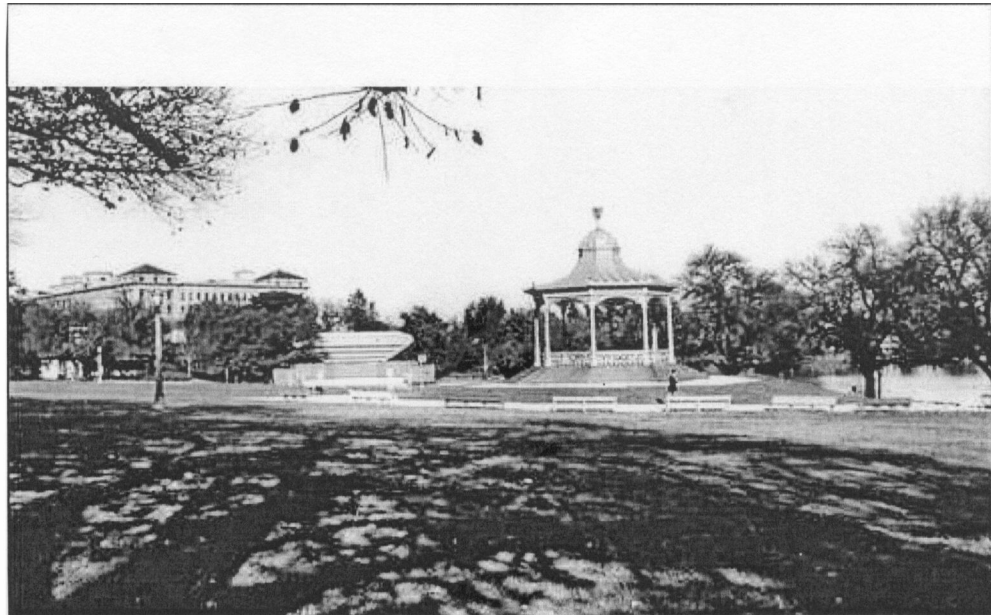
No publication of this image in any form permitted without permission; contact the Mortlock Library of South Australia.

Cheer-Up Hut, Adelaide.

CHEER-UP HUT: A dormitory at the Cheer-Up Hut with a nurse making up a bed; view 2.

1944

Plate 122 Cheer Up Hut 1944, Dormitory (MLSA B60099)



B 61185

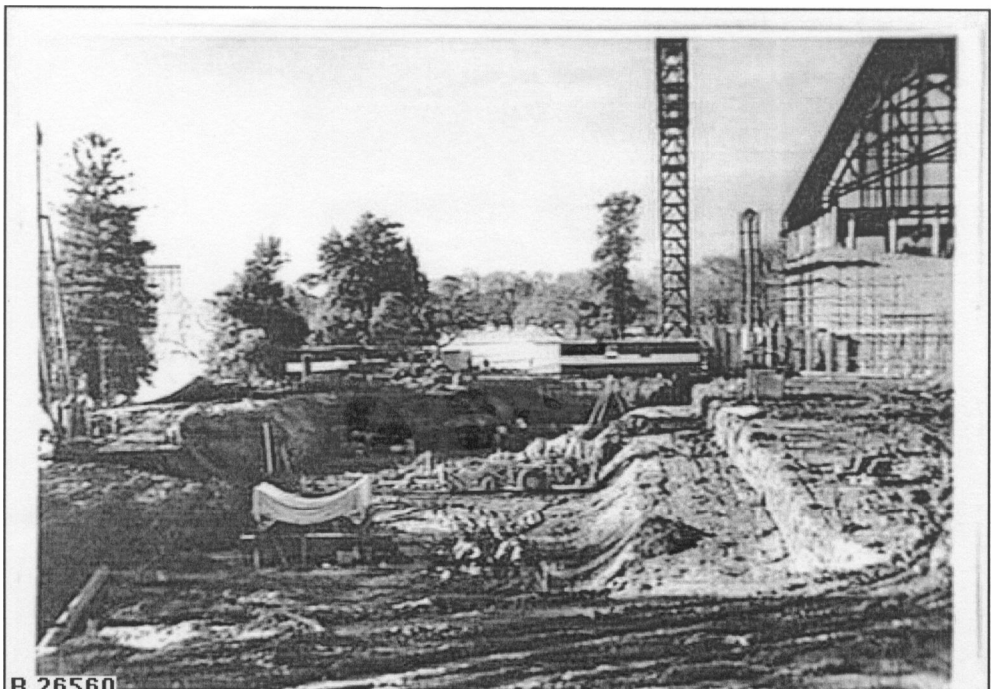
No publication of this image in any form permitted without permission: contact the Mortlock Library of South Australians.

Elder Park.

ELDER PARK: General view of Elder Park, the Sound Shell and the Rotunda can be seen.

1940

Plate 123 Elder Park 1940, view to southwest, Sound Shell and Rotunda (MLSA B61185)



B 26560

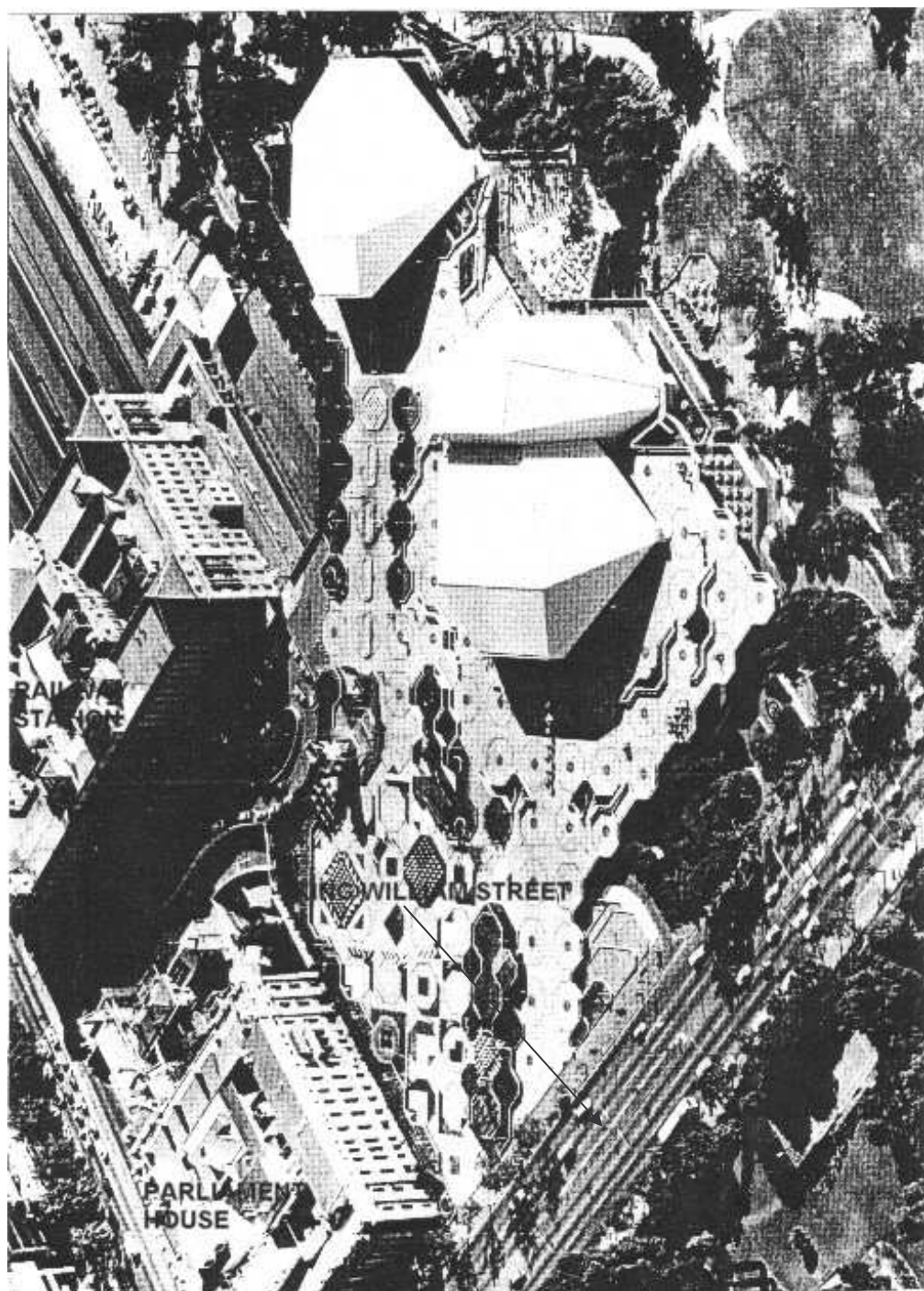
No publication of this image in any form permitted without permission: contact the Mortlock Library of South Australians.

Elder Parl

Drama theatre site at Elder Park, 21st July 1972

1972

Plate 124 Elder Park Festival Theatre Building Site 1972, view to northeast (MLSA B 26560)



Aerial view of the Festival Centre complex, 1979.

First musical performance at the Festival Centre in 1974. Festival Director, Mr Louis van Eyck, (standing
bottom right), smiles approvingly as the London Hallelujah Chorus performs in the courtyard.

"THE ADVANTAGE"

Sir Robert Hargrave in Adelaide,
June 1979.

"THE ADVANTAGE"

Plate 125 Festival Centre c1979 (Thiele 1982) (Note Tennis Court in Government House Grounds lower right)



Plate 126 North and South Bank of River Torrens 2000, east of King William St Bridge which replaced Adelaide Bridge, view south from top of first level of north bank, Domain mid centre (G Copland 2000)



Plate 127 South Bank of River Torrens 2000, east of bridge, view south from waters edge on north bank (G Copland, 2000)



Plate 128 South Bank of River Torrens 2000, east of bridge, view to south from waters edge south bank (G Copland 2000)



Plate 129 South Bank of River Torrens 2000, east of bridge, view to south from top of first level south bank (G Copland 2000)



Plate 130 Victoria Drive and Military Parade Grounds east of King William Street, view south from second level south bank, Embankment and North Boundary of Domain mid centre (G Copland 2000)

PE 4 Government Hut and Domain Boundaries



Government 'Hut', Adelaide, South Australia, 1837

Plate 131 Government Hut 1837, view to southeast, by Mary Hindmarsh
(SAA; Alexander Turnbull Library; F Hindmarsh 1995:15)



Plate 132 First Government House c1838, view to southeast, artist unknown (Mitchell Library)

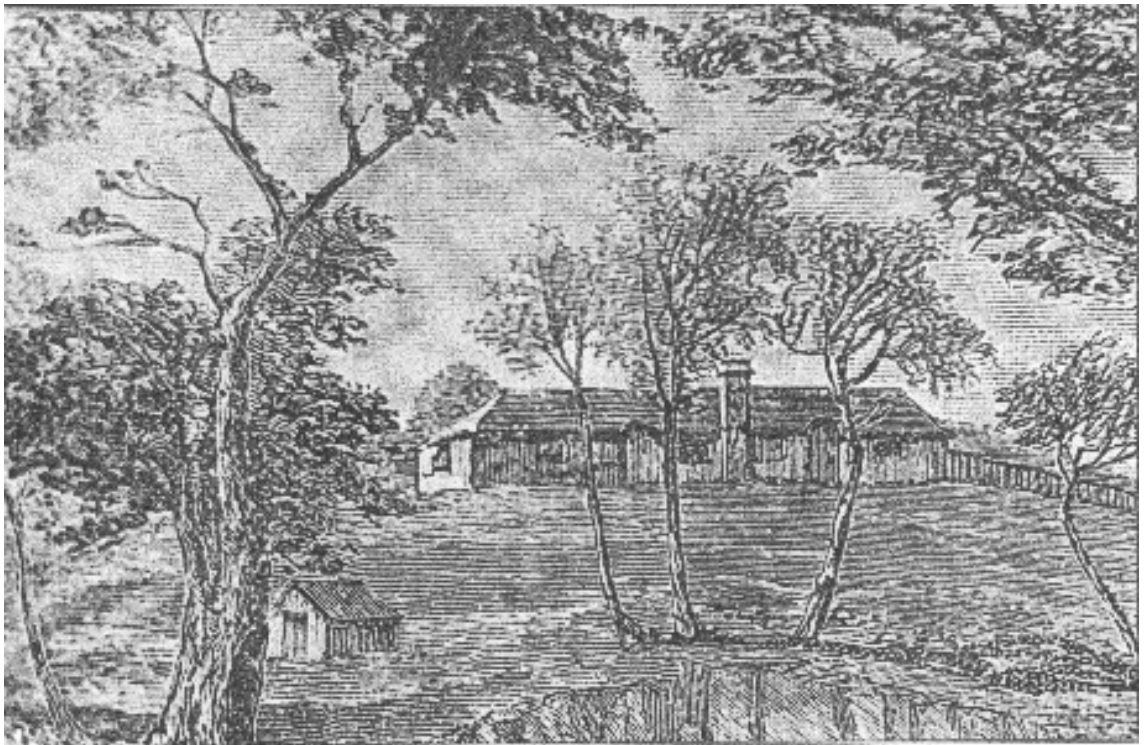
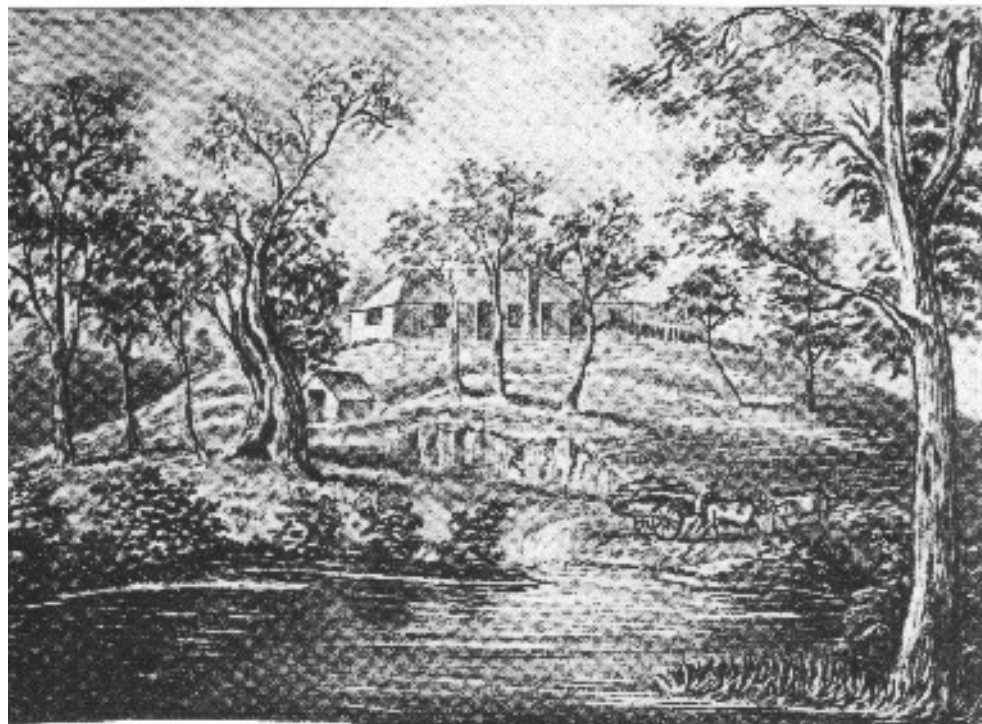


Plate 133 Government Hut c1837, appears to be reversed (Hailes 1998; MLSA B6705)



Government House in 1837

Plate 134 Government Hut c1837 artist unknown, also appears to be reversed (SAA, Manning 1985:38.; Gill 1968)



Plate 135 Government Hut c1839, view to southeast, by Martha Berkeley, Tents mid right (SA Art Gallery O.850)

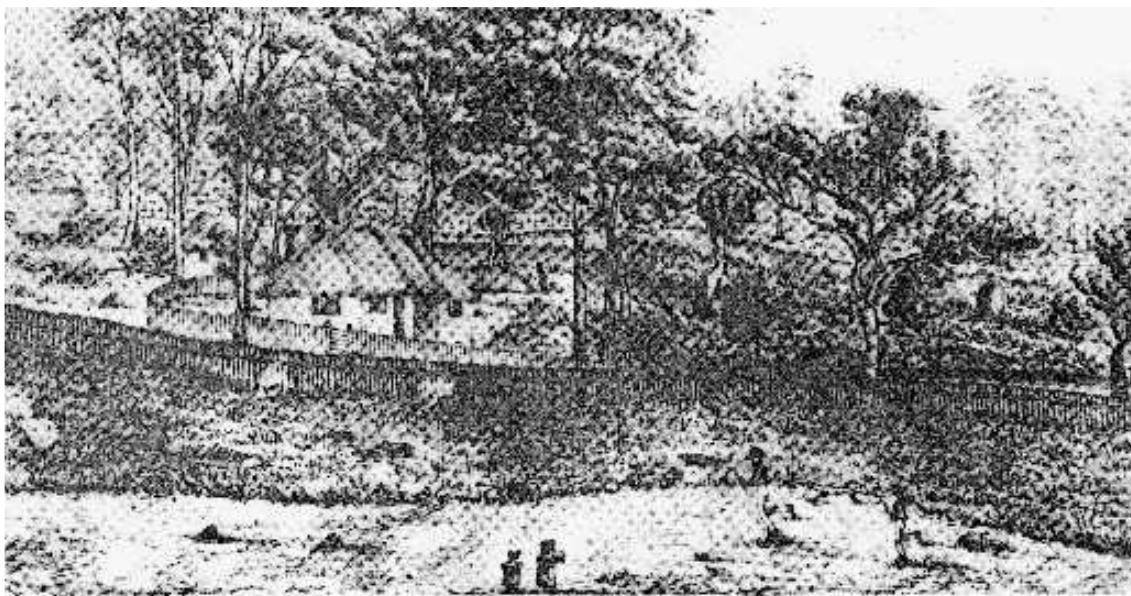


Plate 136 Gardener's Cottage in Governor's Garden, view to west from northwest corner of Domain, by Mrs. Macleod (SAA; Borrow 1982:7; Langmead 1983)



Plate 137 Government Hut c1839, view to southeast, by S T Gill (NLA PIC R112)

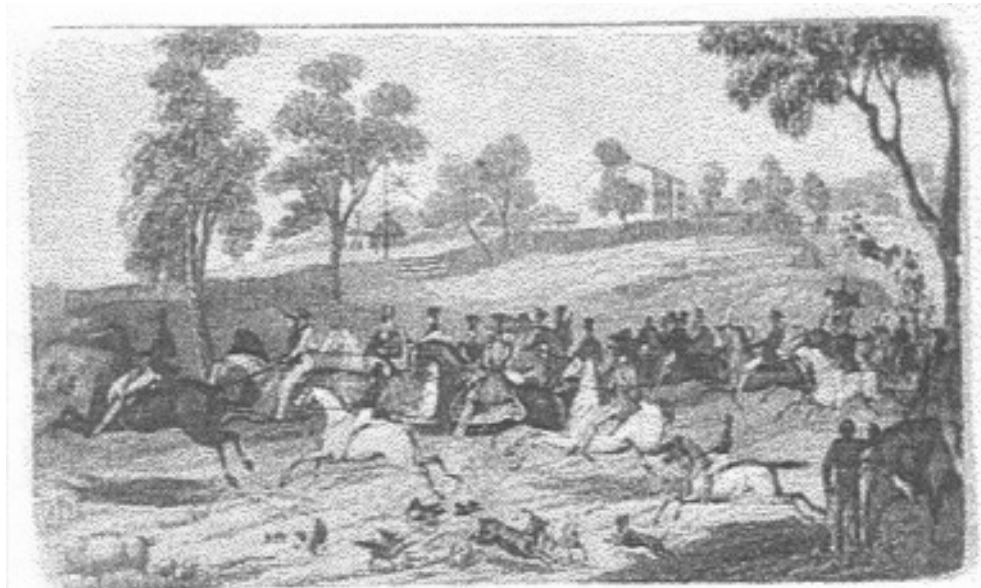


Drawn by J. Neil

Departure of the Expedition

London Published by T & W Boone

Plate 138 Eyre's Departure 1840, view to east, Government Hut mid left Government House mid right, by J Neil (Eyre 1845:1)



B 6125

No publication of this image in any form permitted without permission: contact the Mortlock Library of South Australia.

Eyre's Expedition

Eyre's expedition of 1840-41. The departure from Adelaide, 1840. Drawn by J. Neil. Reproduced from vol. 1, page 1 of Eyre's "Journals of Expeditions into Central Australia"

ca. 1840

Plate 139 Eyre's Departure 1840, Western Boundary of Domain (MLSA B6125)

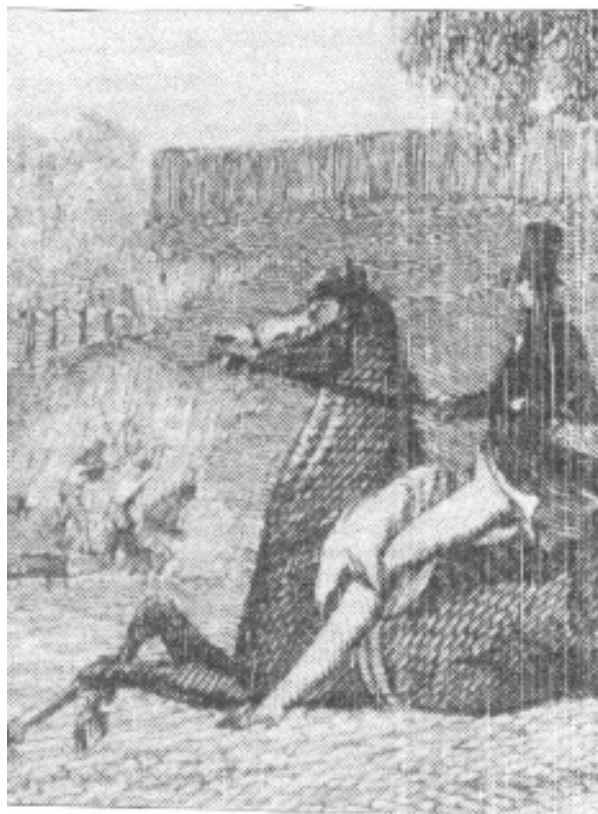
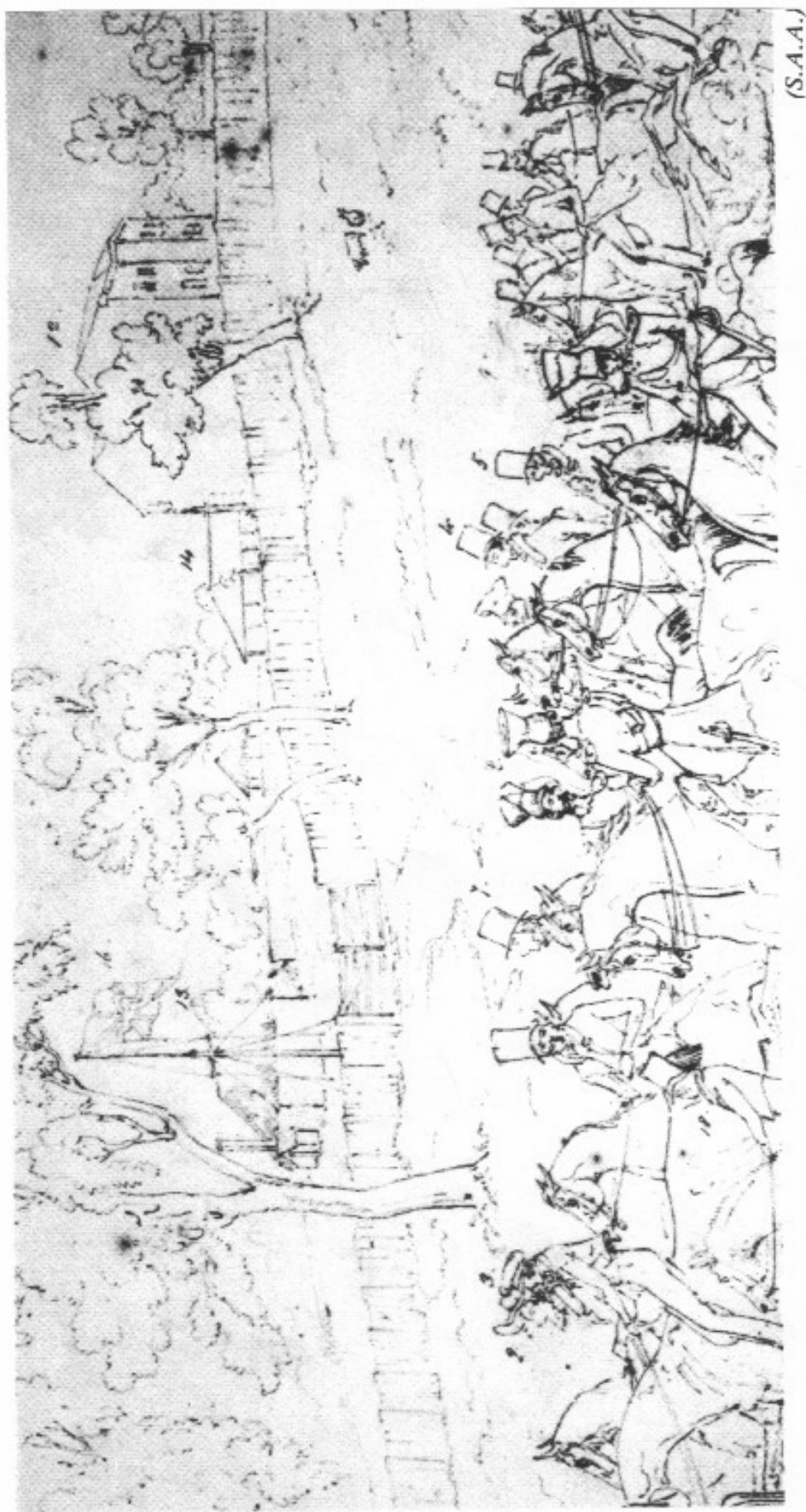


Plate 140 Quarry 1840, Enlargement of mid left of Eyre's departure above



(S.A.A.)

Eyre's Departure, 18th June, 1840. (Pen-drawing by George Hamilton) (Old Government House is No. 13, and New Government House is No. 12).



B 2136

No publication of this image in any form permitted without permission: contact the Mortlock Library of South Australia.

King William Street

King William Street, with Government House on the left

1845

Plate 142 King William Street and North Terrace 1845, view to southeast, Government House Sentry Box mid left (MLSA B2136)



SOUTH AUSTRALIAN BANK, COUNCIL ROOM, &c., NORTH TERRACE, ADELAIDE

From a drawing by J. T. Gill, 1845

B 2138

No publication of this image in any form permitted without permission: contact the Mortlock Library of South Australia.

North Terrace

North Terrace looking west from King William Street. Acres 16 and 15 in foreground.

1845

Plate 143 North Terrace 1845, view to west, SA Bank mid left Council Rooms mid right (MLSA B2138)



North Terrace looking east about the turn of the Century. SA Archives

Plate 144 King William Street and North Terrace c1900, view to southeast, Domain mid left (Manning 1985:180)



North Terrace East

Plate 145 North Terrace c1900, view to northeast, Domain Southern Boundary mid left (Manning 1985:166)



King William Street

Plate 146 King William Street c1900, view to north, Domain mid top (Manning 1985)



North Terrace
ca.1876

Plate 147 North Terrace c1876, view to west from southwest corner of Domain, Old Parliament House mid right (MLSA B9168)

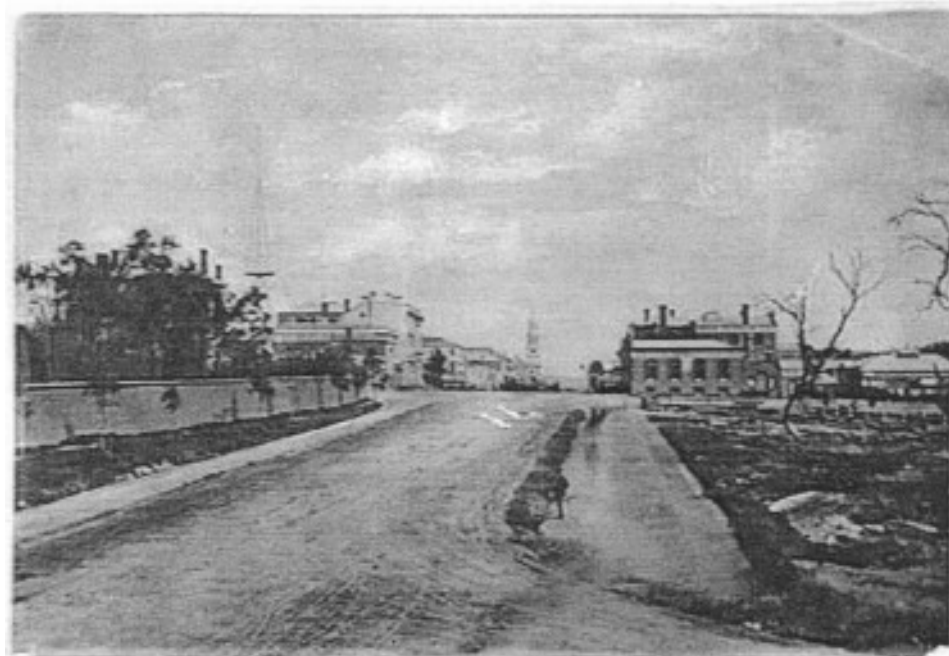
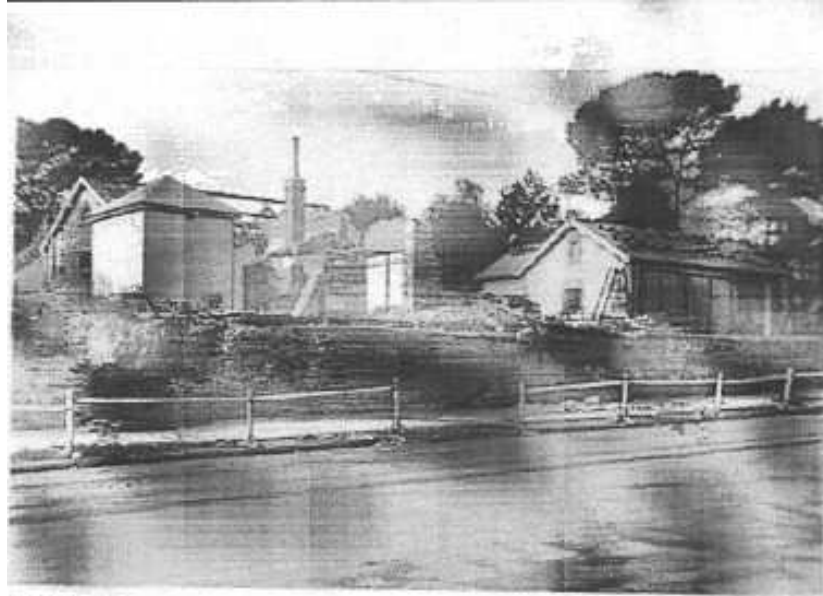


Plate 148 King William Street 1865, view south, Domain Western Boundary left, site for new Parliament House mid right (MLSA B9168)



3 8526

Publication of this image in any form permitted without permission: contact the Maitland Library of South Australia.

Government House

Plate 149 Domain Western Boundary 1926, view east, Demolition of old Stables? (MLSA B8526)

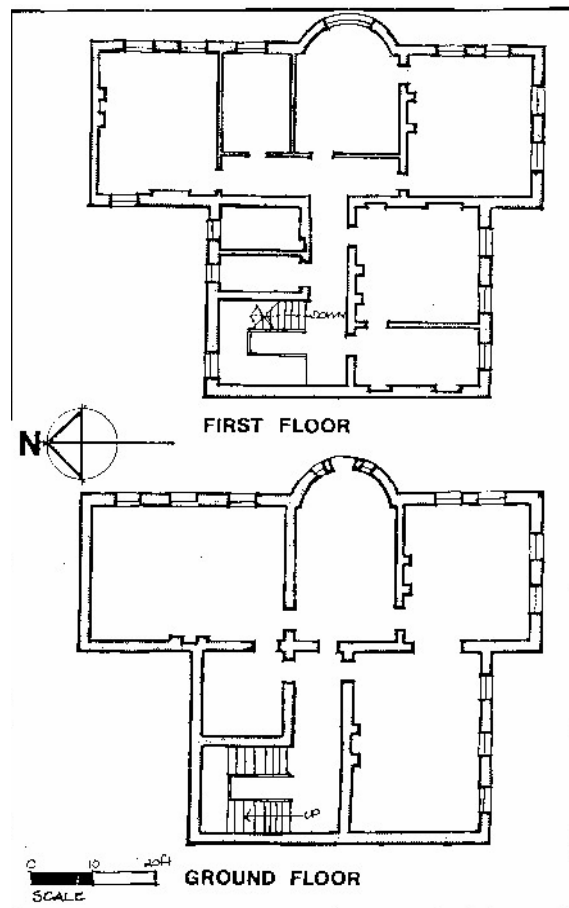


Plate 150 Domain Western Boundary 2000, view to east, approx. point Plate 148 drawn (G Copland 2000)



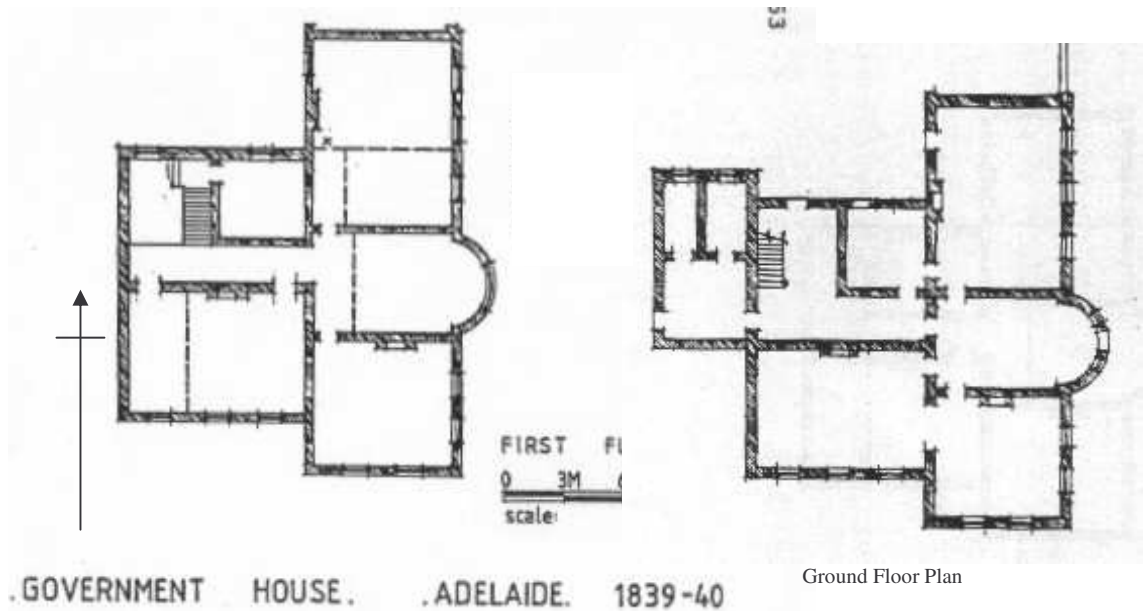
Plate 151 Domain Western Boundary 2000, view to northeast from Festival Theatre Plaza
Government House mid centre (G Copland 2000)

PE 5 Kingston Wing and Current Government House



Plans of East Wing, Government House,
Adelaide, South Australia (1839-1840)

Plate 152 Kingston Wing Plan c1839, (Langmead 1983:XI.6)



GOVERNMENT HOUSE. ADELAIDE. 1839-40
Plate 153 First Floor Plan Kingston Wing c1839, broken
lines = possible partition walls (Danvers Report 1986:53)

Ground Floor Plan

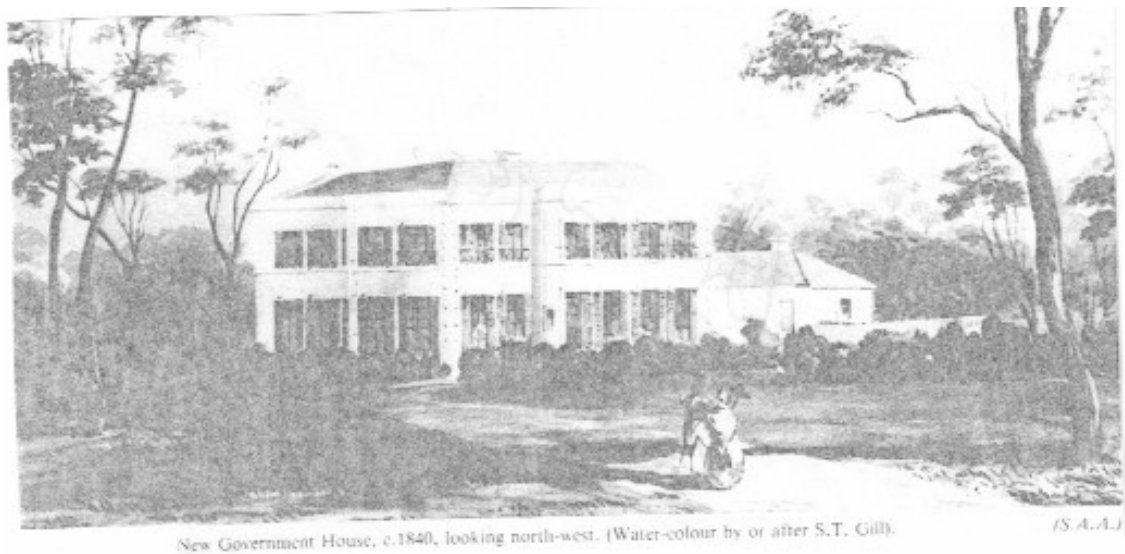


Plate 156 Government House Eastern Façade, Kingston Wing c1840, view northwest, by or after S T Gill (Borrow 1982:6)

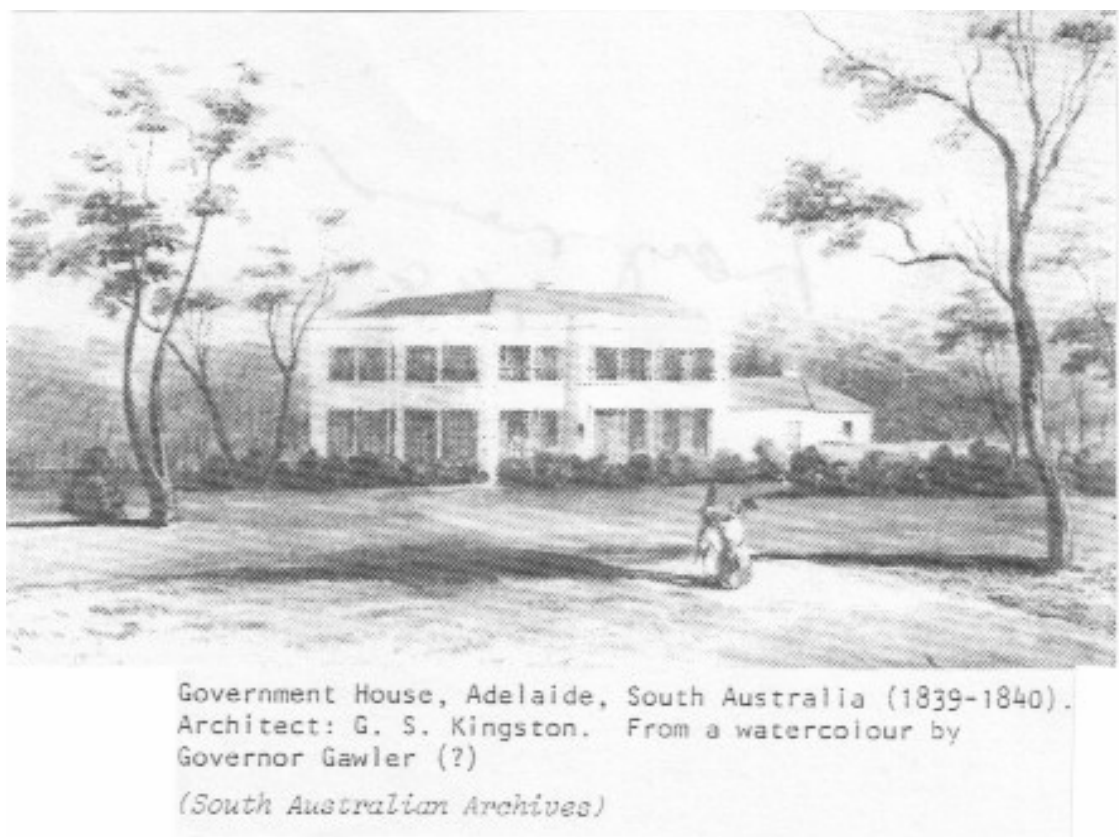


Plate 157 Kingston Wing c1840, possibly by Governor Gawler (Langmead 1983)

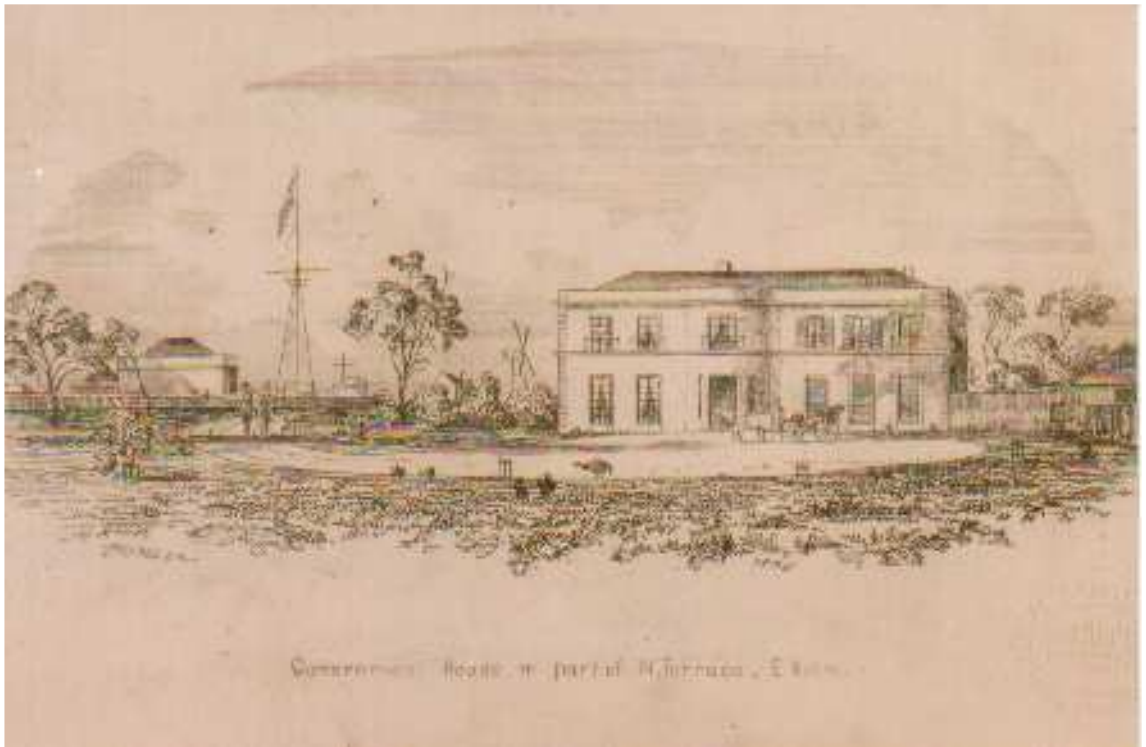


Plate 158 Kingston Wing c1845, view to west, by F R Nixon (NLA PIC S147)



Plate 159 Kingston Wing c1840, view to west, possibly by F R Nixon (Manning 1985:38)



S. T. Gill, 1818–1880, *Government House, North Terrace, Adelaide, 1845*, Adelaide, watercolour on paper, 27.1 x 39.7 cm; Gift of the South Australian Company 1931, Art Gallery of South Australia

Plate 160 Government House c1845, view to northwest, by S T Gill (Carter 1997:202)



Plate 161 Government House c1850, view to northwest, by S T Gill (NLA NK2038/23, T1284)



Plate 162 Domain Southern Boundary and Government House c1845, by S T Gill (NLA PIC R114)

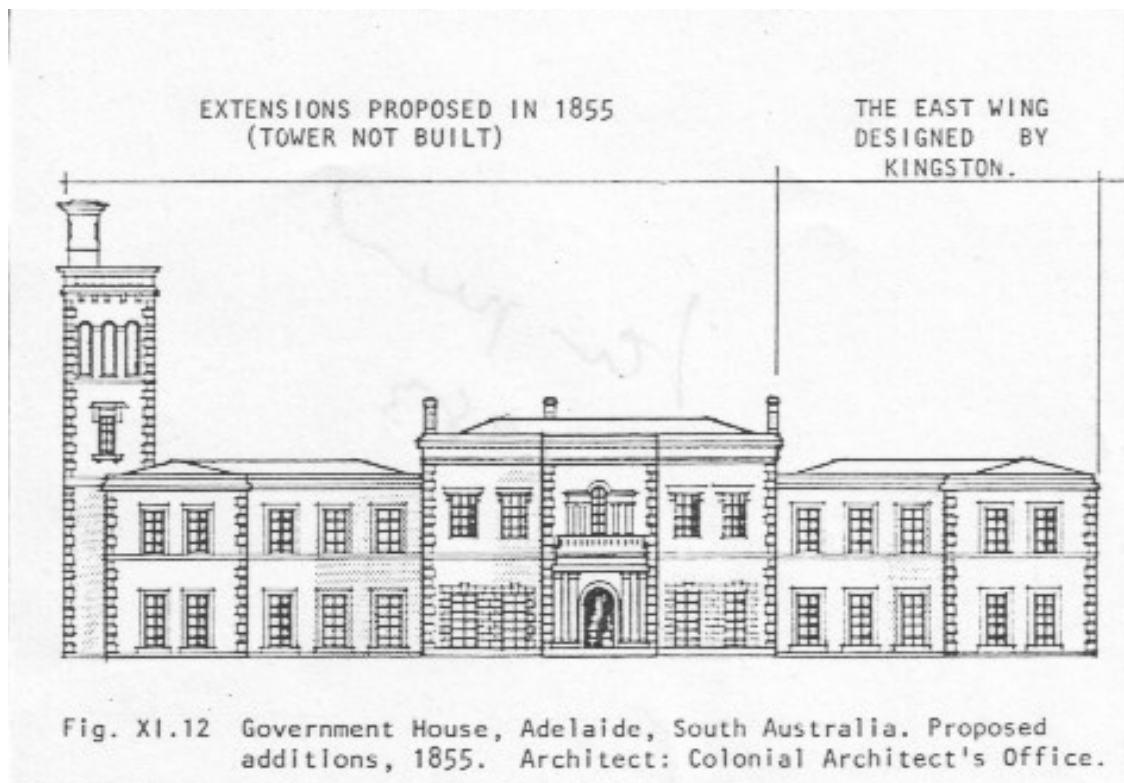
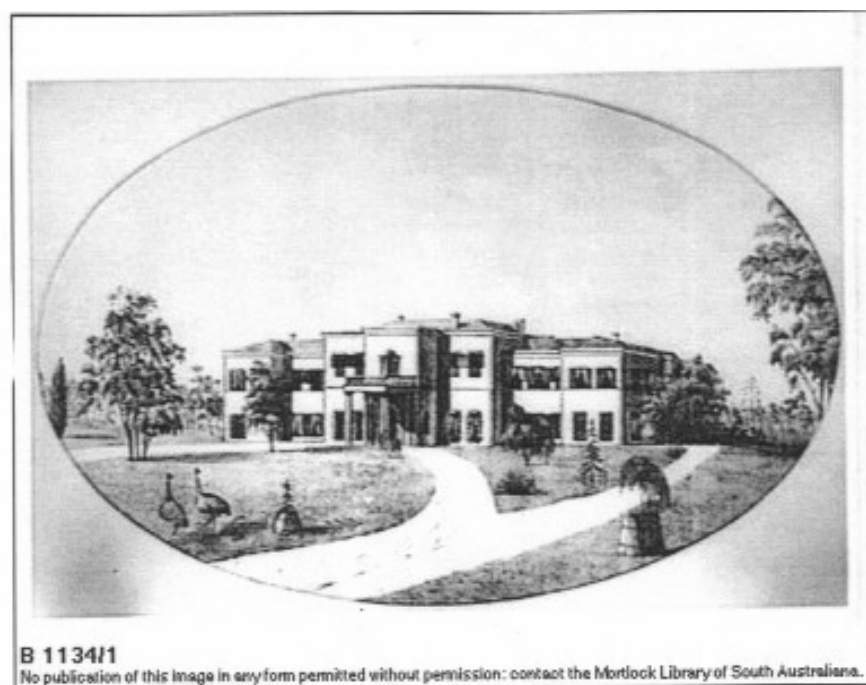


Plate 163 Elevation of Proposed Extensions 1855 (Langmead 1983:XI.12)



Plate 164 Government House Southern Façade post1855, view to northwest, artist unknown, dated by NLA as c1840 (NLA NK 11434, U3228)



Government House
ca.1855

Plate 165 Government House c1855, view to northeast (MLSA B1134/1)



Govt House. 1860-98.

B 13792

No publication of this image in any form permitted without permission: contact the Mortlock Library of South Australia.

Government House

ca.1860

Plate 166 Government House c1860, view to northeast (MLSA B13792)



B 6370

No publication of this image in any form permitted without permission: contact the Mortlock Library of South Australia.

Government House

Government House, Adelaide

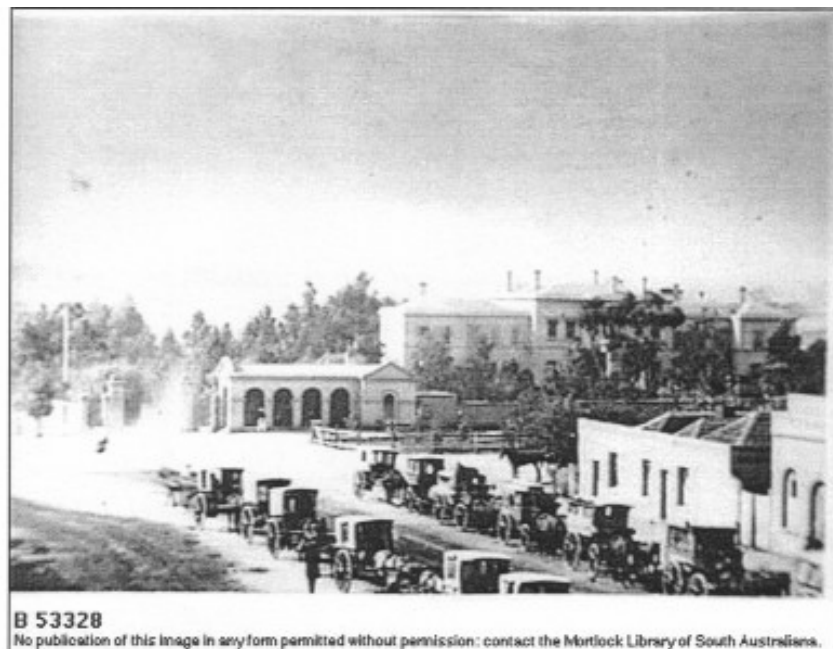
ca.1861

Plate 167 Government House c1861, view to north, note lamp post (MLSA B6370)



Government House
Government House, Adelaide
ca.1866

Plate 168 Government House and Grounds c 1866, view to north (MLSA B6371)



Government House
A view from the east end of King William Street showing covered cars for hire.
ca.1868

Plate 169 Sentry Box and Government House c1868, view to northeast (MLSA B53328)

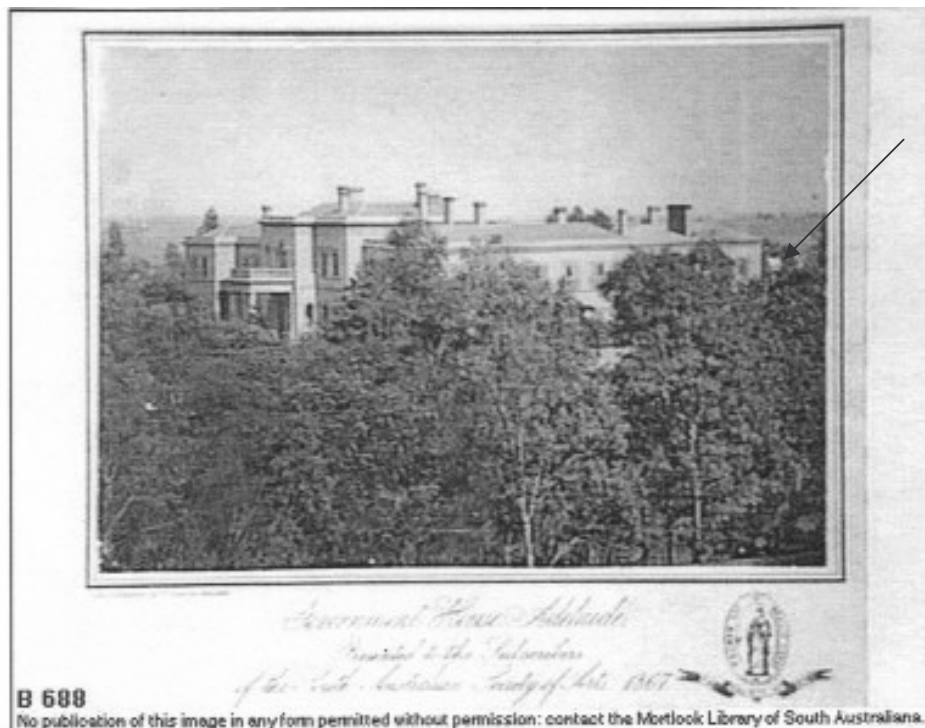


B 2791

No publication of this image in any form permitted without permission: contact the Mortlock Library of South Australia.

Government House
ca.1867

Plate 170 Government House c 1867, view to northeast (MLSA B2791)

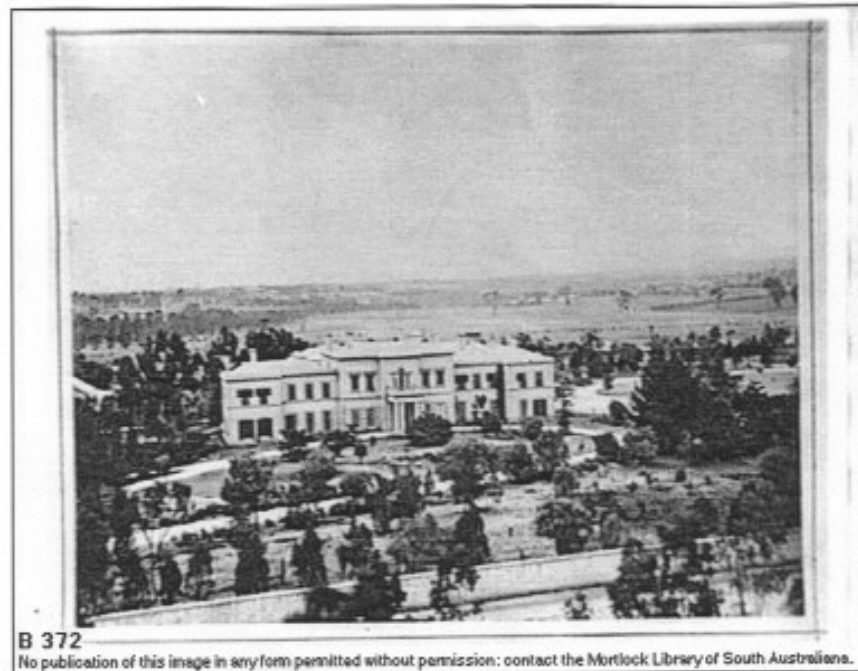


B 688

No publication of this image in any form permitted without permission: contact the Mortlock Library of South Australia.

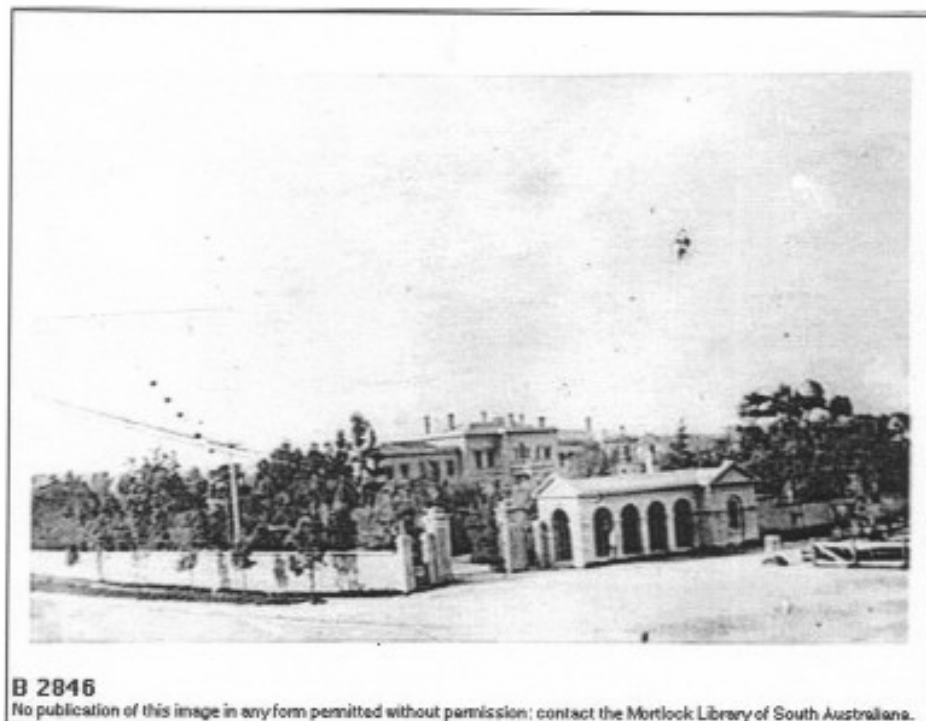
Government House
1867

Plate 171 Government House c1867, Eastern and South Façade, view to northwest, arrow to Dovecote (MLSA B688)



Government House
ca.1870

Plate 172 Government House, Grounds and southern Boundary c 1870, view to northeast (MLSA B372)



Government House
ca.1870

Plate 173 Sentry Box, Government House, Western and Southern Boundaries c1870 (MLSA B2846)



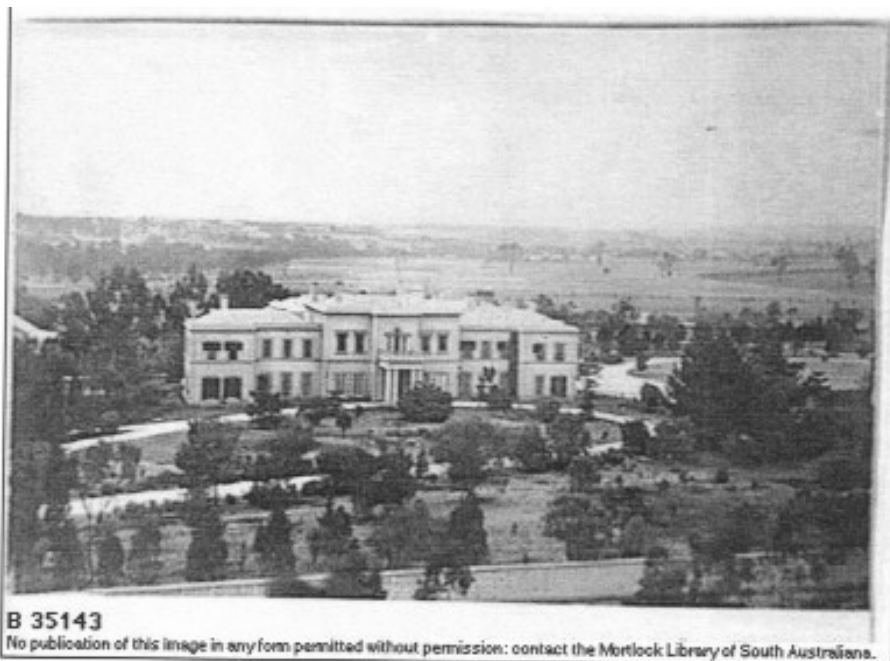
Government House
Government House and King William Road
ca.1870

Plate 174 Government House, Grounds and King William Street c1870, view to north (MLSA B4182)



Government House
Government House entrance
1870

Plate 175 Government House Portico 1870, view to northeast (MLSA B11940)



Government House
1871

Plate 176 Government House and Grounds 1871, view to northeast (MLSA B35143)



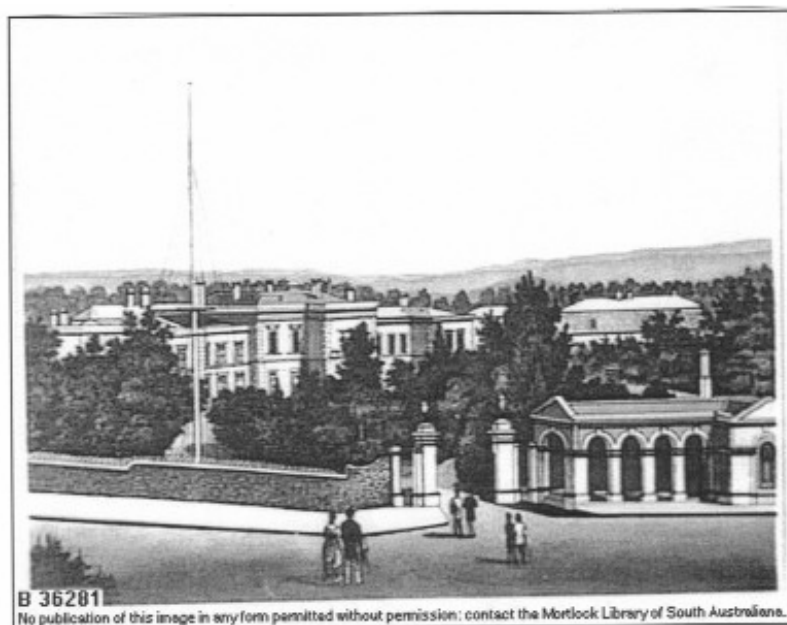
Government House
Government House, Adelaide
ca.1872

Plate 177 Government House Eastern Façade c1872, view to west (MLSA B10702)



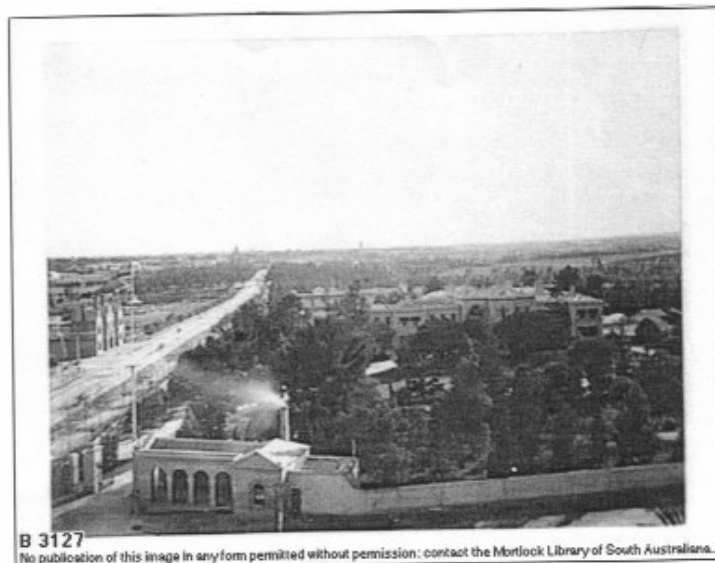
Government House
Government House, Adelaide
ca.1872

Plate 178 Government House Western and Southern Façade c1872, view to northeast, Glasshouse mid left (MLSA B10701)



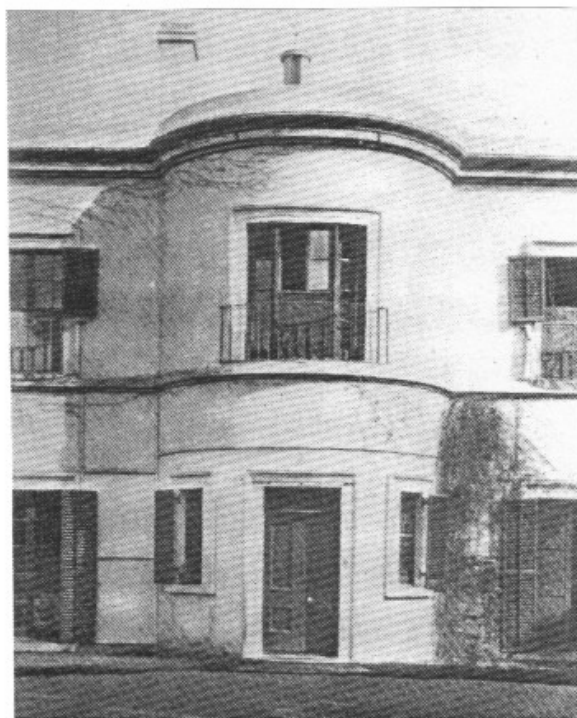
Government House
Government House: view from the corner of King William Street and North
Terrace
ca.1880

Plate 179 Government House, Domain Western Boundary and Sentry Box c1880, view to northeast (MLSA B36281)



B 3127
No publication of this image in any form permitted without permission; contact the Mortlock Library of South Australia.
Government House
Government House from King William Road
ca.1883

Plate 180 Government House, Grounds and King William Street c1883, view to north (MLSA B3127)



Government House, Adelaide, South Australia (1839-1840)
Bow on East Facade. Architect: G. S. Kingston.
(1905 photograph) (S.A.A)

Plate 181 Government House Kingston Wing 1905, view to west (Langmead 1983:X1.5)



Plate 182 Government House Southern Façade 1971, view to northeast (G Copland 1971)



Plate 183 Government House South-eastern Grounds and Pergola 1971, view to southeast (G Copland 1971)



Plate 184 Government House South-western Grounds 1971, view to southeast (G Copland 1971)



Plate 185 Government House Eastern Façade, Kingston Wing on left 2000, view to west (G Copland 2000)



Plate 186 South-eastern Grounds 2000, view to southeast, Fountain mid right (G Copland 2000)



Plate 187 South-western Grounds 2000, view to northeast, (G Copland 2000)



Plate 188 Government House Southern Façade 2000, view to north (G Copland 2000)



Plate 189 Government House Portico 2000, view to northeast, note Plate 185 of 1870 (G Copland 2000)



Plate 190 Government House Western Façade 2000, view to east, note Plate 188 c1872 (G Copland 2000)



Plate 191 Left - Government House Northwest Façade 2000, view to southeast, House right Servant's Quarters left
Right - Northwest Grounds 2000, view to northeast (G Copland 2000)



Plate 192 Courtyard 2000, view to east, House right Servants' Quarters left (G Copland 2000)



Plate 193 Male Servants' Quarters mid centre and Female Quarters mid left 2000, view to southeast, arrow to this author's 1971 bedroom (G Copland 2000)



Plate 194 Male Servants' Bedrooms First Floor, Kitchens and Servant's Dining Room Ground Floor, Northern Façade 2000, view to south (G Copland 2000)



Plate 195 Outbuildings North west of Servant's Quarters 2000, view to the south west (G Copland 2000)



Plate 196 East-wing Female Servant's Quarters and Garages 2000, view to the east (G Copland 2000)



Plate 197 Peppertree Cottage, Private Secretary's Residence north of the House 2000, view to north (G Copland 2000)



Plate 198 Butler's Cottage 2000, view to northeast (G Copland 2000)



Plate 199 Ablutions Block and Gardener's Facilities 2000, view to southeast (G Copland 2000)

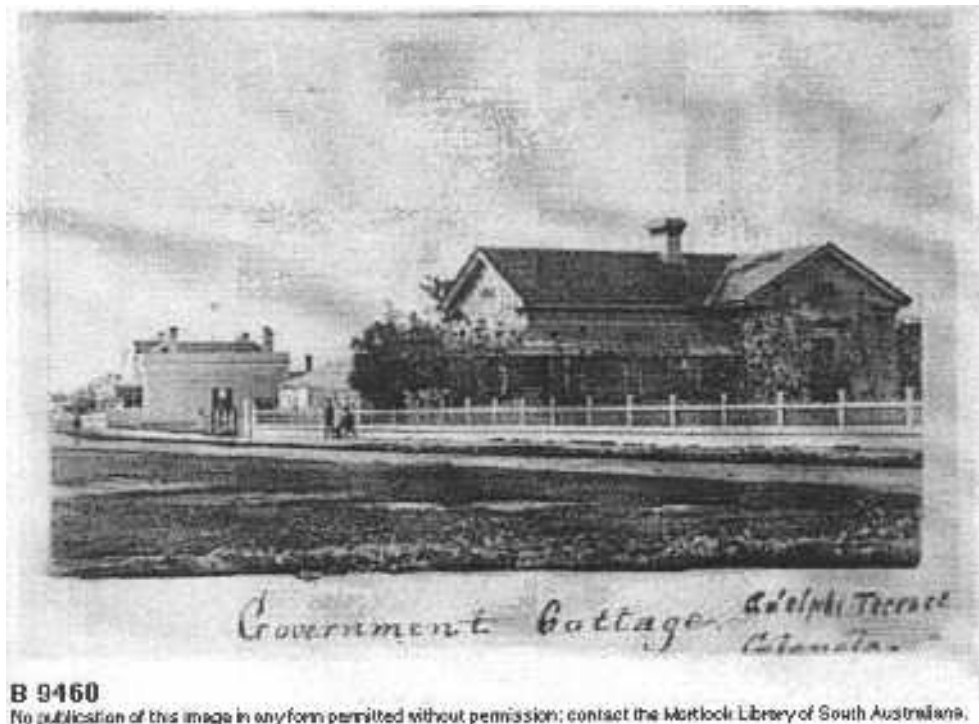


Plate 200 Government Cottage Glenelg 1870 (MLSA B9460)

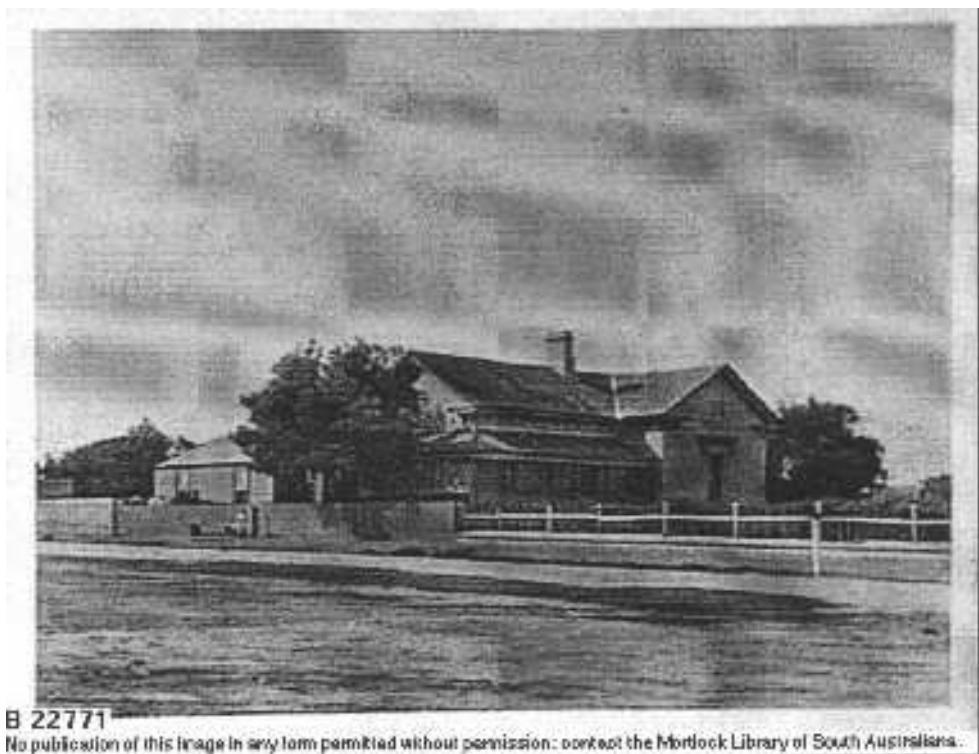


Plate 201 Government Cottage Glenelg c1900 (MLSA B22771)

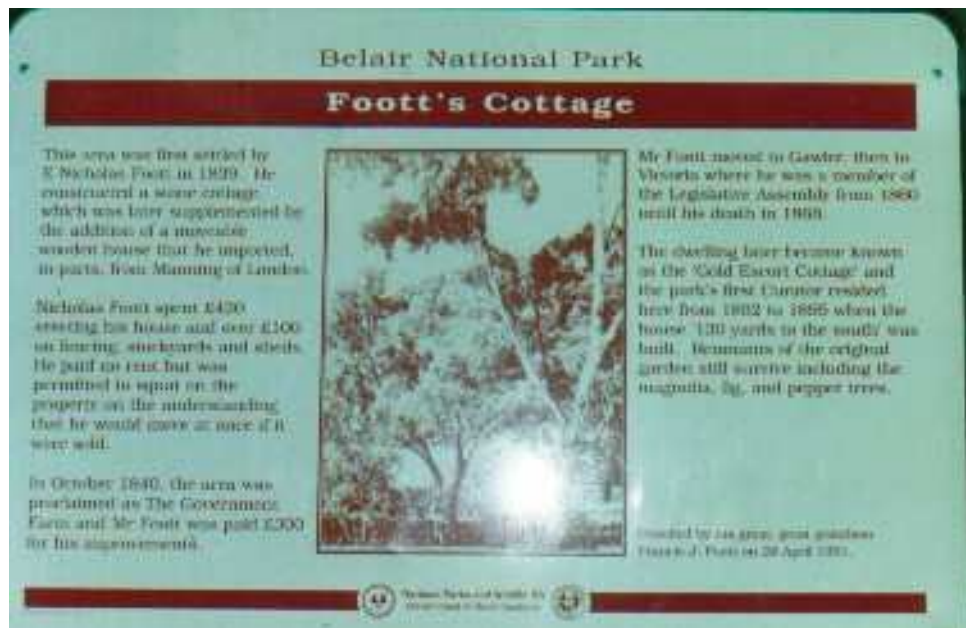


Plate 202 Position of Manning House on Government Farm (G Copland 2001)



Plate 203 Old Government House Belair National Park c1990s, view to northwest (South Australian Postcard Coompany)



Plate 204 Old Government House, view to north east (G Copland 200)

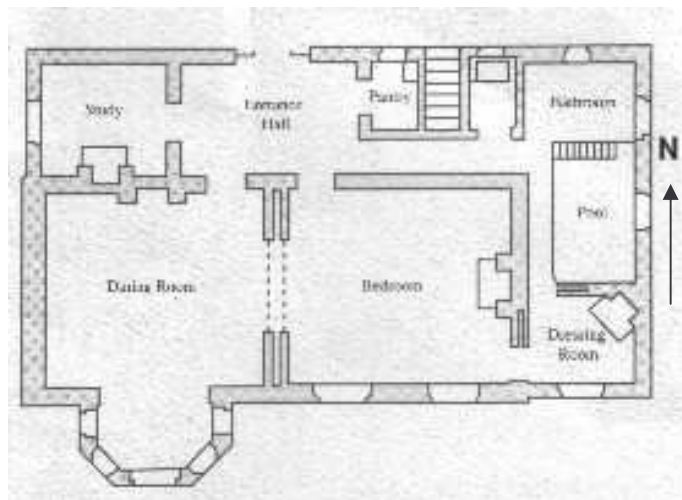


Plate 205 Floor Plan 1859 (Department of Environment and Natural Resources Pamphlet, FIS 15145, May 1993)



Heligoland in 1936
(Permission M. u. L. Schensky of Heligoland)



Government House, Heligoland
(Permission National Gallery of South Australia)

APPENDIX 1

Table 10 Full Citation of Documents from the PRO