

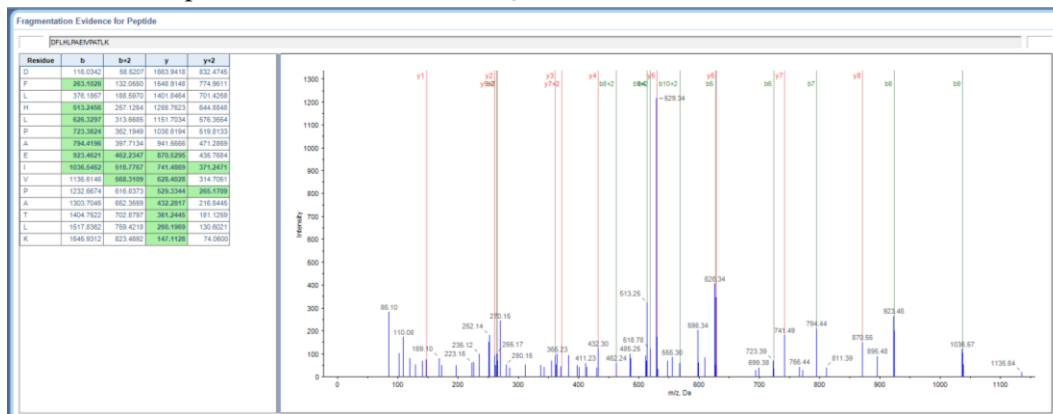
## Appendix 2-7

Chapter 2. Exploiting genomic data to identify proteins involved in abalone reproduction.

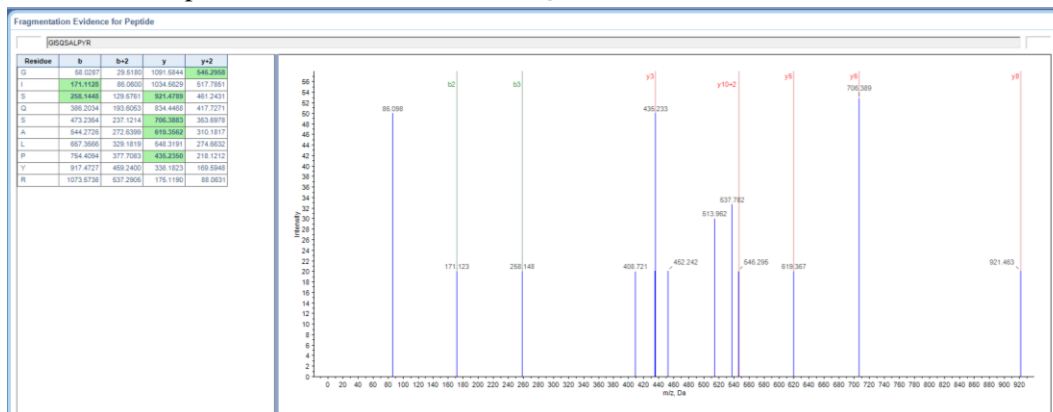
**Omar Mendoza-Porras**; Natasha A. Botwright; Sean M. McWilliams; Mathew T. Cook; James O. Harris; Gene Wijffels and Michelle L. Colgrave

“ProteinPilot screenshot of mass spectral fragment evidence for male abalone proteins identified using a 99% confidence peptide unless a lower confidence is indicated. The ProteinPilot™ Paragon algorithm with integrated false discovery rate was used. Representative spectra for single peptide identifications and/or modified peptides are presented. Please refer to **Appendix 2-5** for more information regarding m/z, charge and mass error”

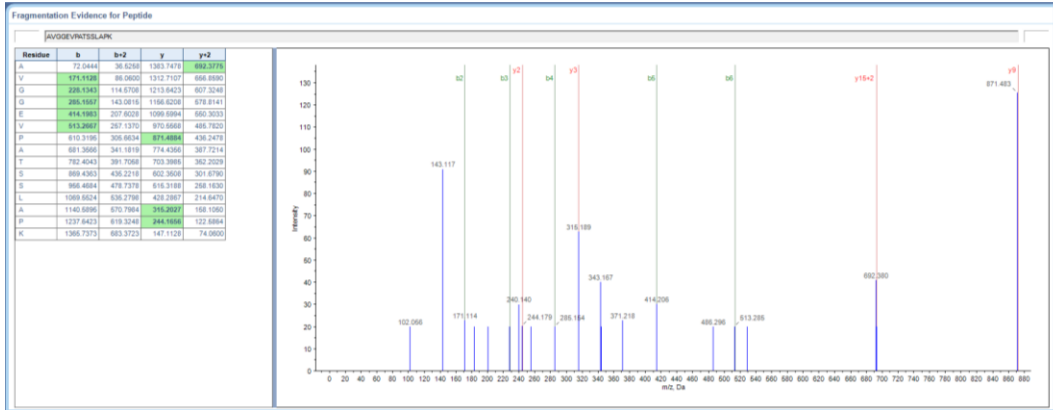
40S ribosomal protein S10. [UniProtKB: Q70MT4]



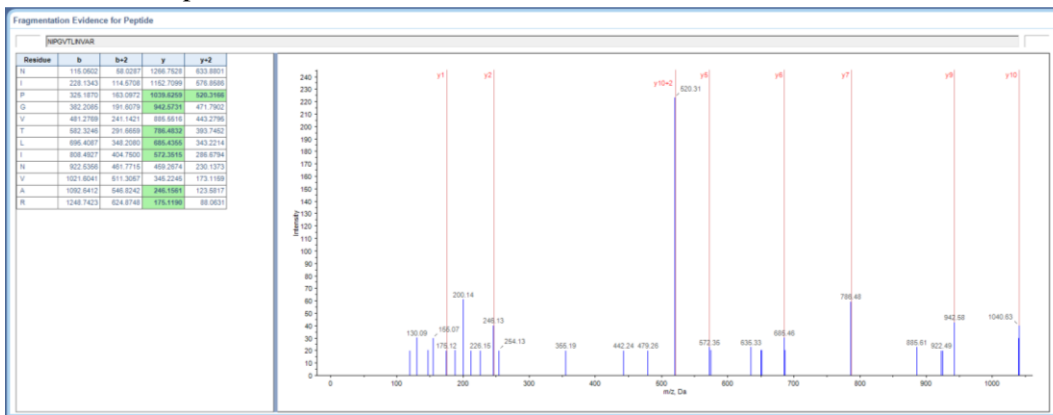
40S ribosomal protein S13. [UniProtKB: K1QRZ3]



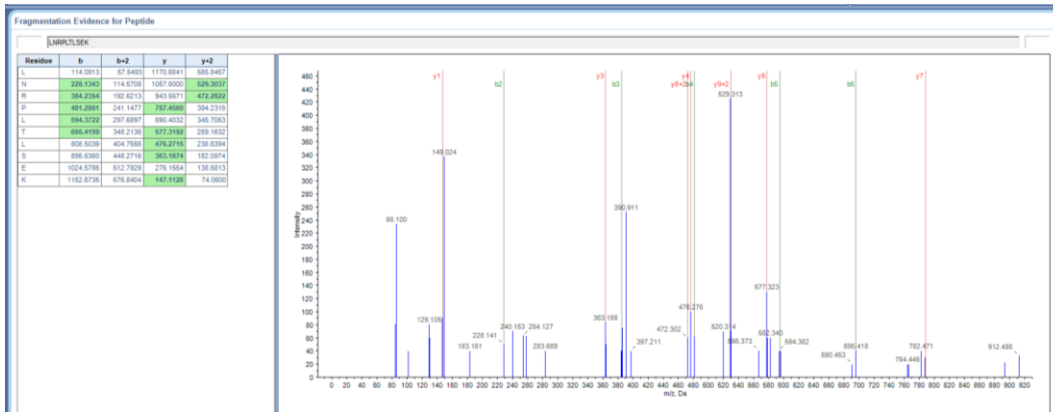
60S ribosomal protein L12. [UniProtKB: K1PM66]



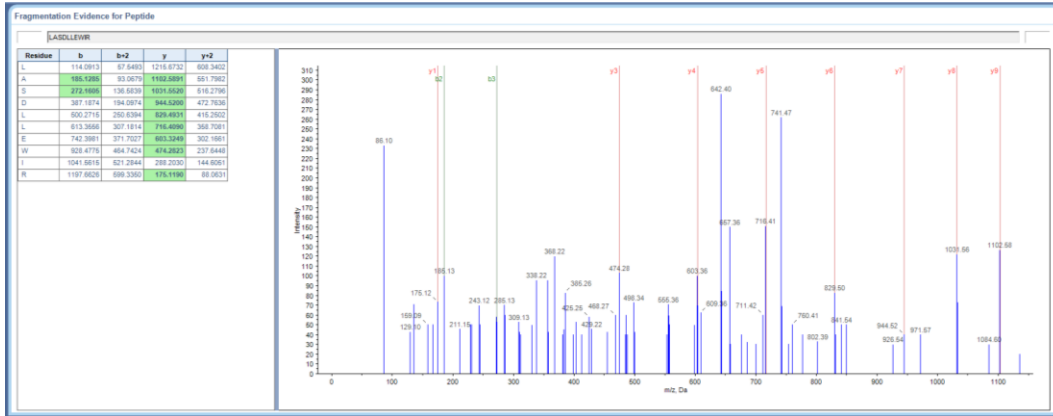
60S ribosomal protein L4. [UniProtKB: K1P8W6]



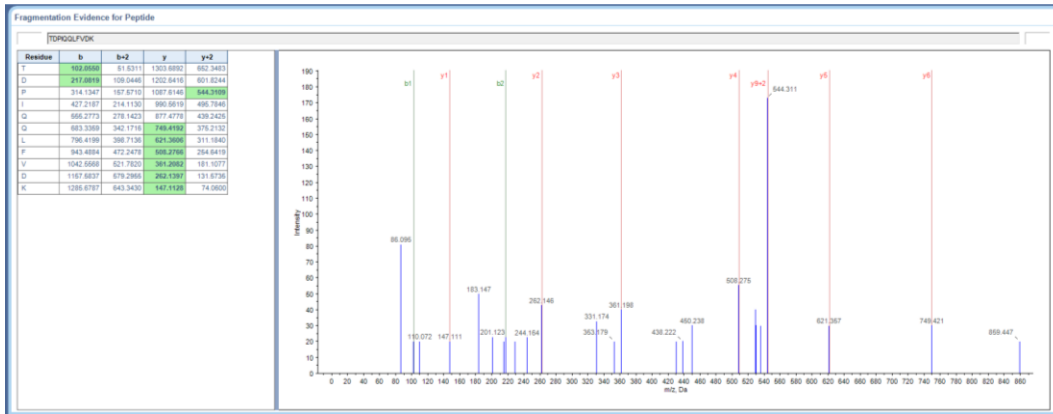
Aconitate hydratase, mitochondrial. [UniProtKB: K1QMY1]



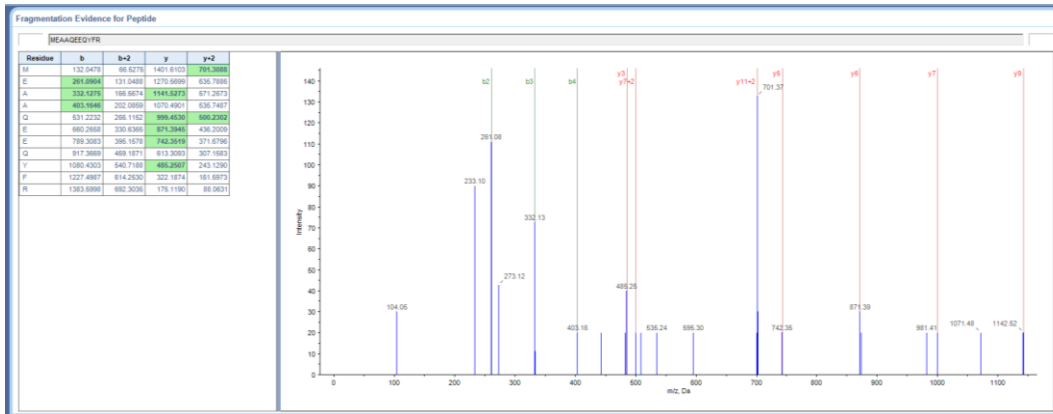
Alpha-actinin, sarcomeric. [UniProtKB: K1RH58]



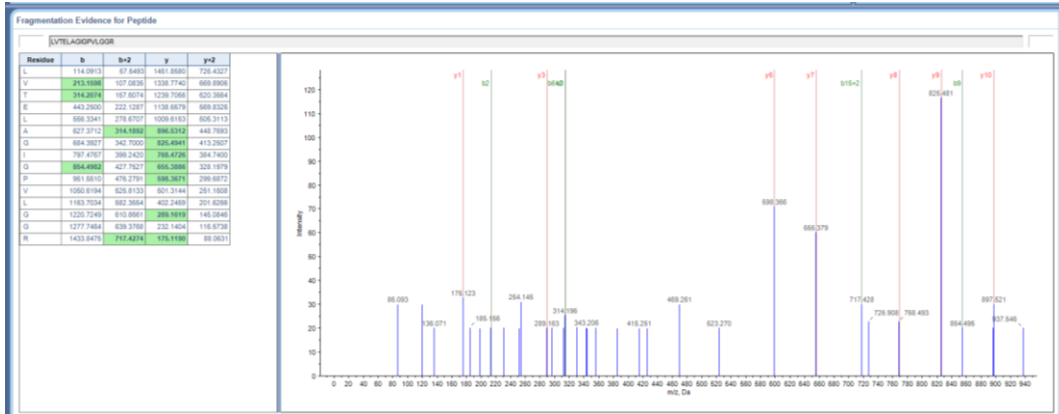
ATP synthase-coupling factor 6, mitochondrial. [UniProtKB: B6DDV7]



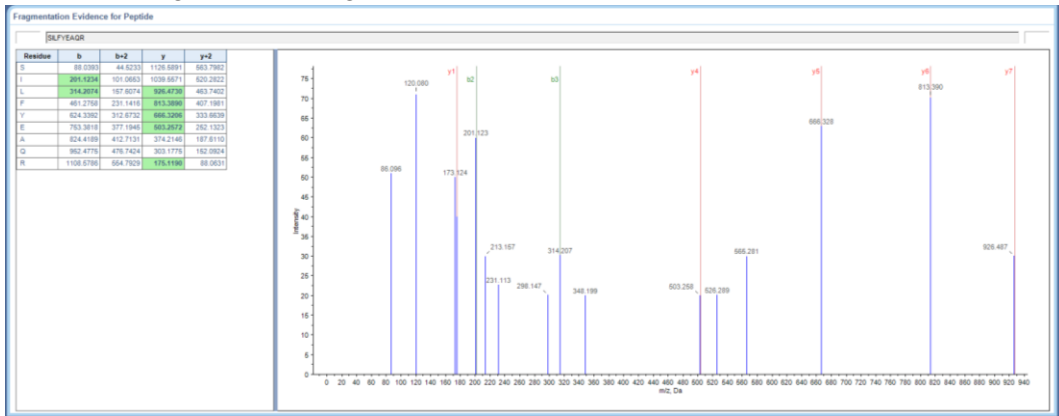
ATPase inhibitor, putative. [UniProtKB: B7P7L5]



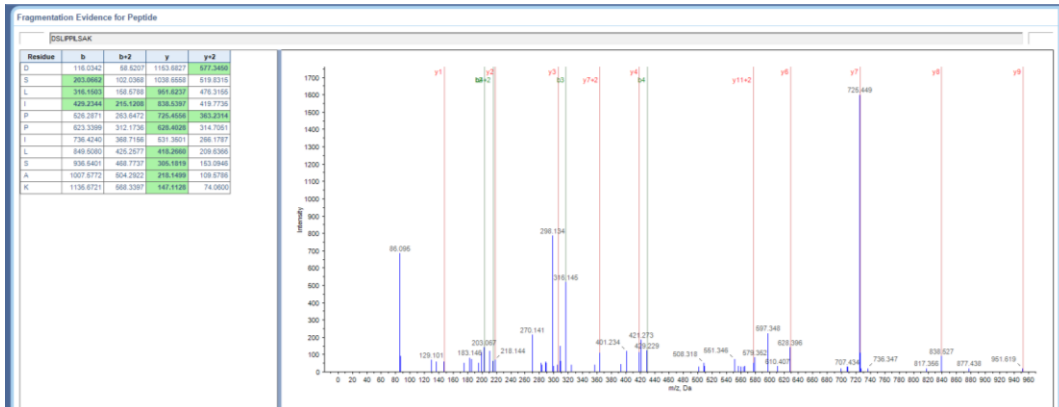
Barrier-to-autointegration factor. [UniProtKB: K1PG58]



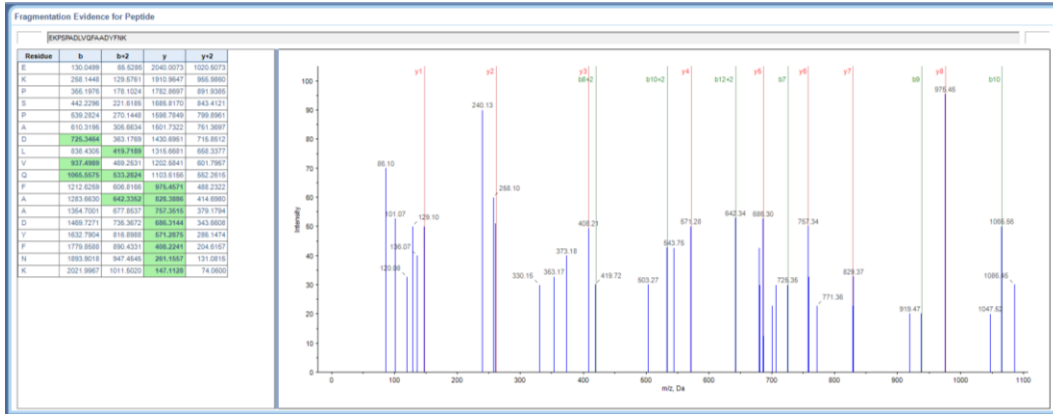
Beta-1,4-endoglucanase (Fragment). [UniProtKB: Q5ISJ1]



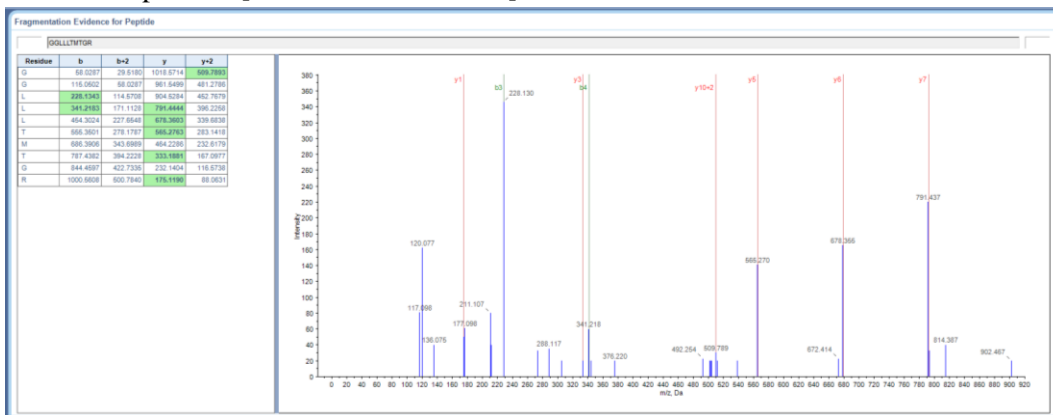
Beta-1-3 glucan recognition protein. [UniProtKB: C1JZA4]



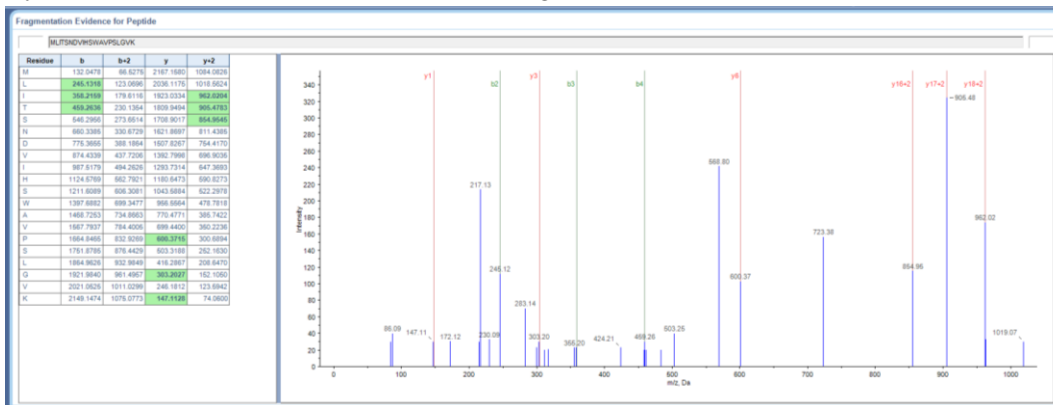
cAMP-dependent protein kinase type II regulatory subunit. [UniProtKB: K1R158]



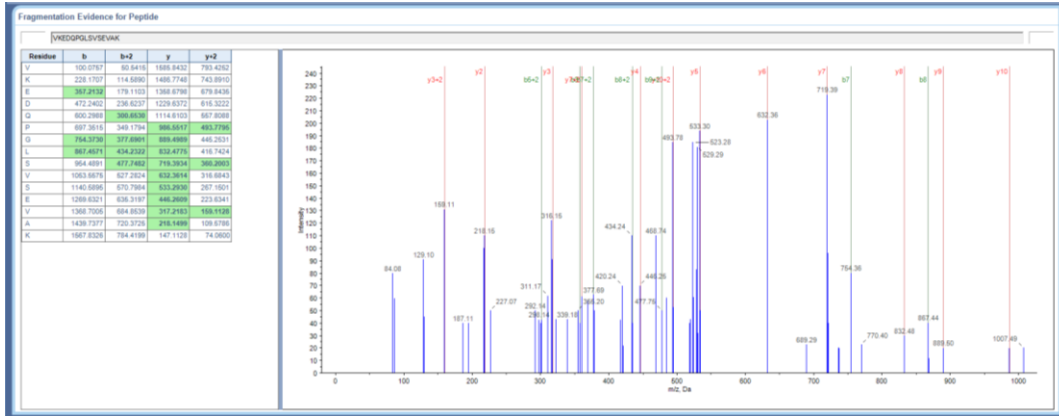
Cdc42-like protein. [UniProtKB: K1REY7]



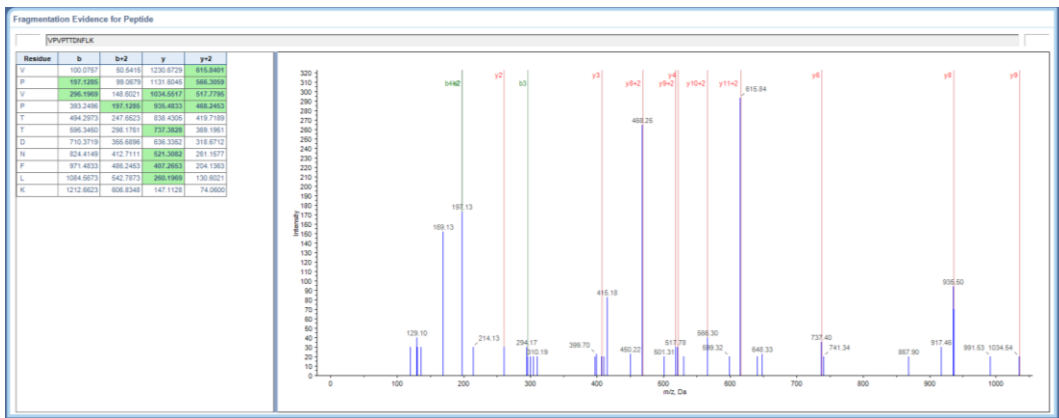
Cytochrome c oxidase subunit II. [GenBank: gi|84627259]



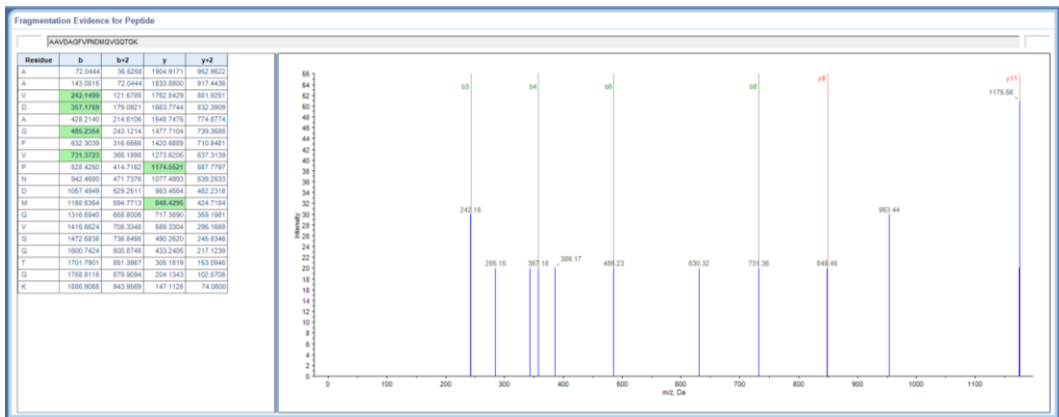
DNA-binding protein, putative. [UniProtKB: B7P950]



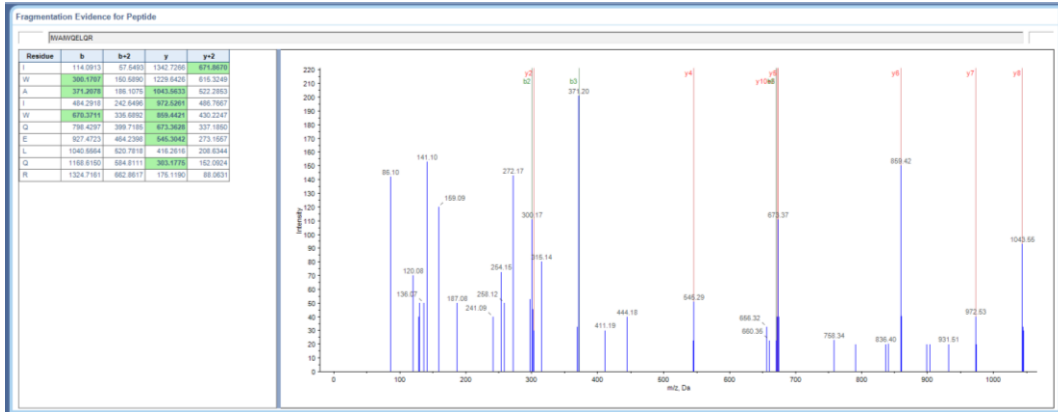
Enkurin. [UniProtKB: K1RUW9]



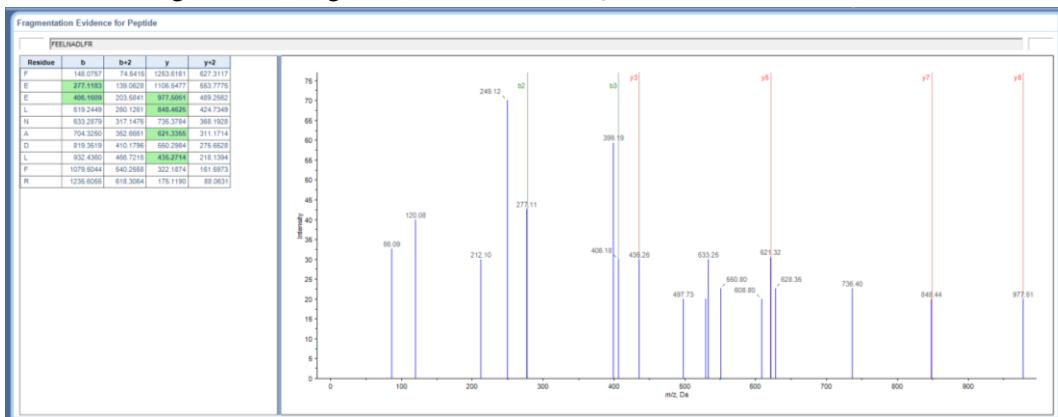
GJ21462. [UniProtKB: B4LIV9]



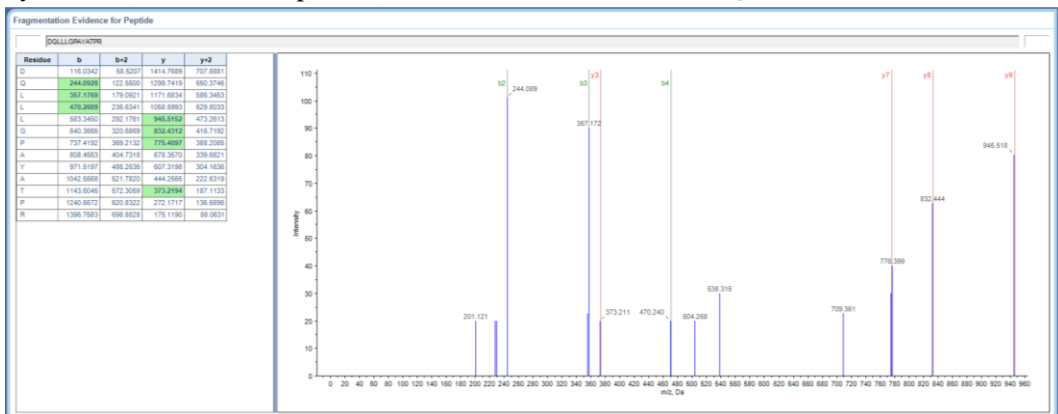
Haemocyanin. [UniProtKB: Q564J1]



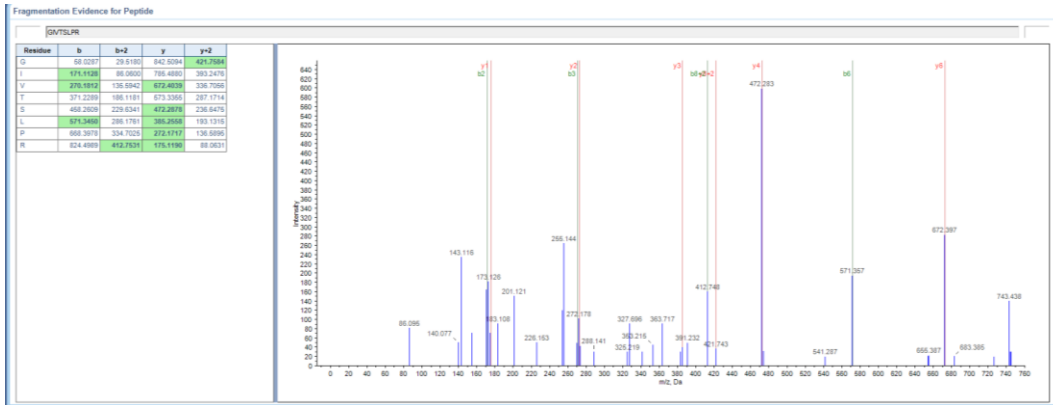
Heat shock cognate 70 (Fragment). [UniProtKB: Q3LF64]



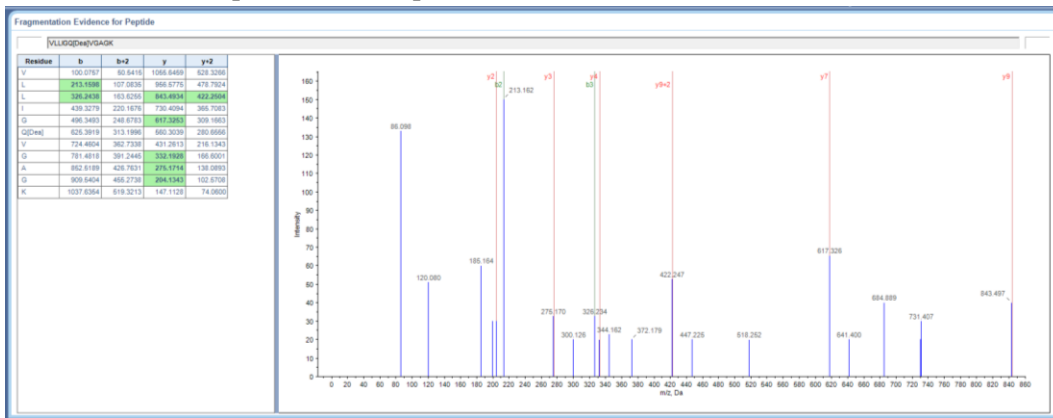
Hydroxyacyl-Coenzyme A dehydrogenase/3-ketoacyl-Coenzyme A thiolase/enoyl-Coenzyme A hydratase (Trifunctional protein), beta subunit. [UniProtKB: Q6P8B9]



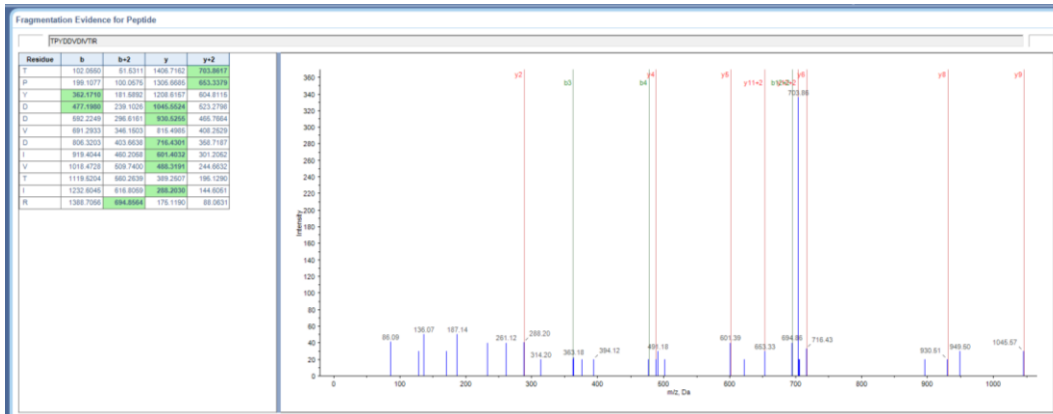
### Inhibition of apoptosis protein (Fragment). [UniProtKB: E3UCE5]



### Interferon-induced protein 44-like protein. [UniProtKB: K1QUS6]

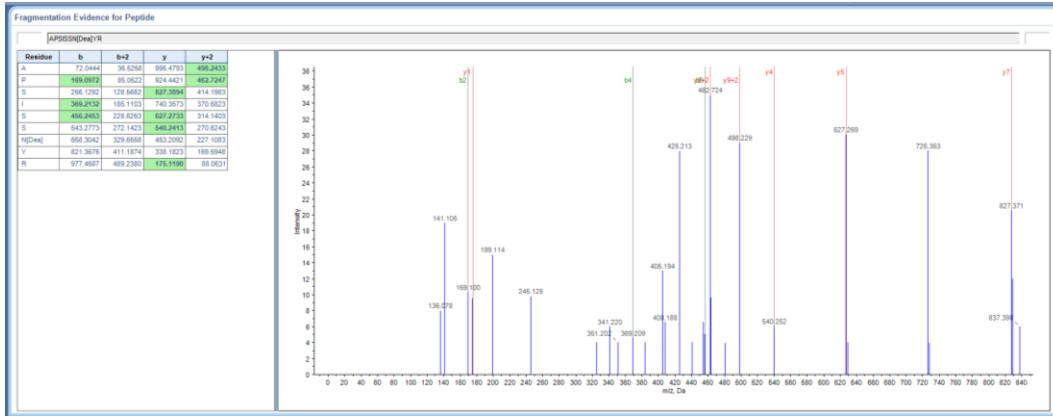


### Isocitrate dehydrogenase [NAD] subunit alpha, mitochondrial. [UniProtKB: K1Q9G3]

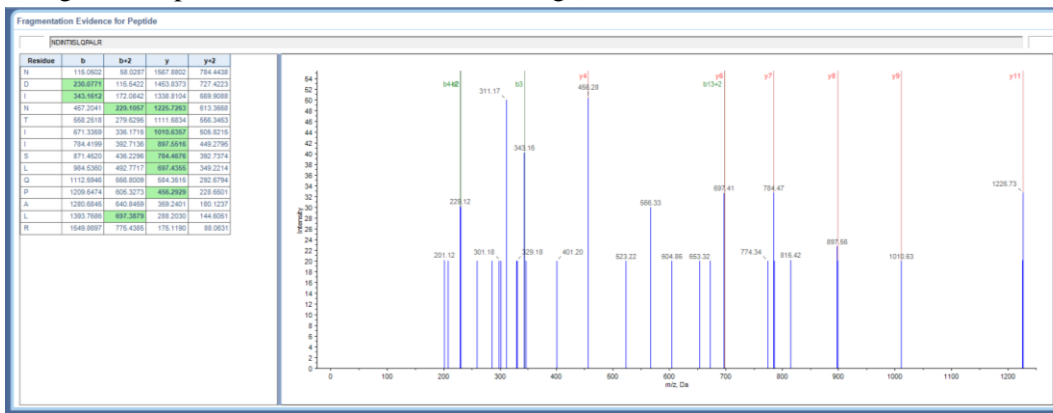




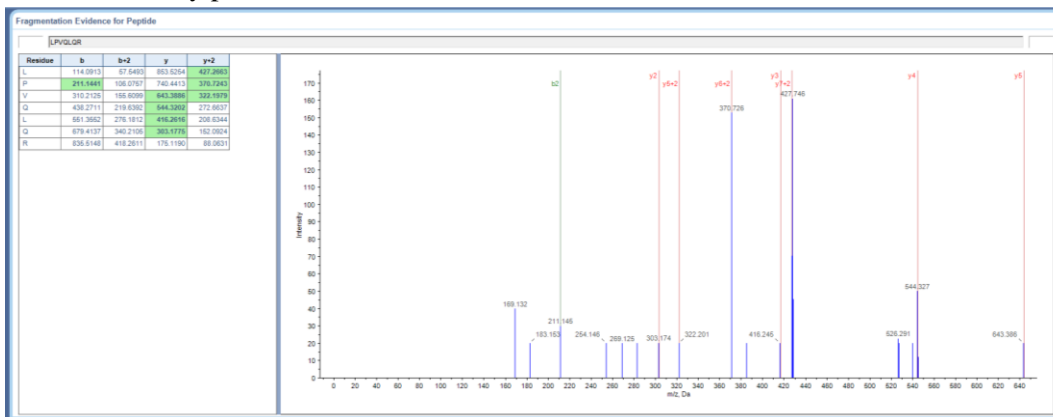
Kinesin-like protein KIF19. [UniProtKB: K1R617]



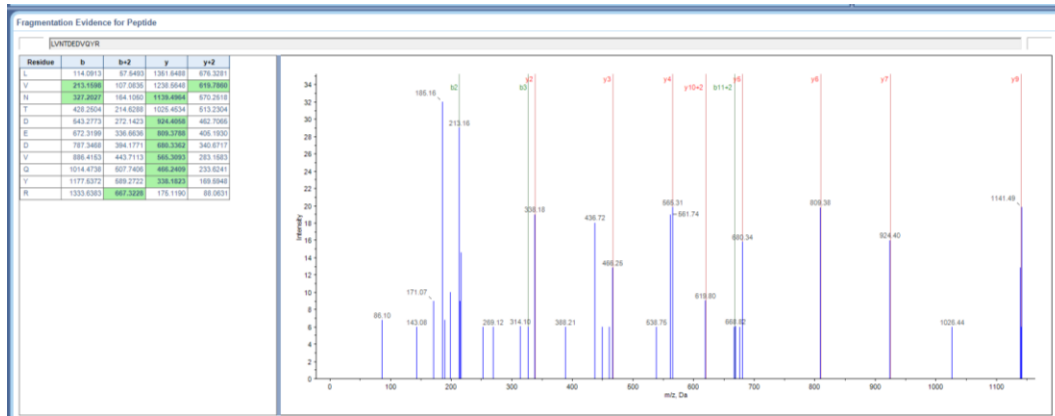
Manganese-superoxide dismutase. [GenBank: gi|166406953]



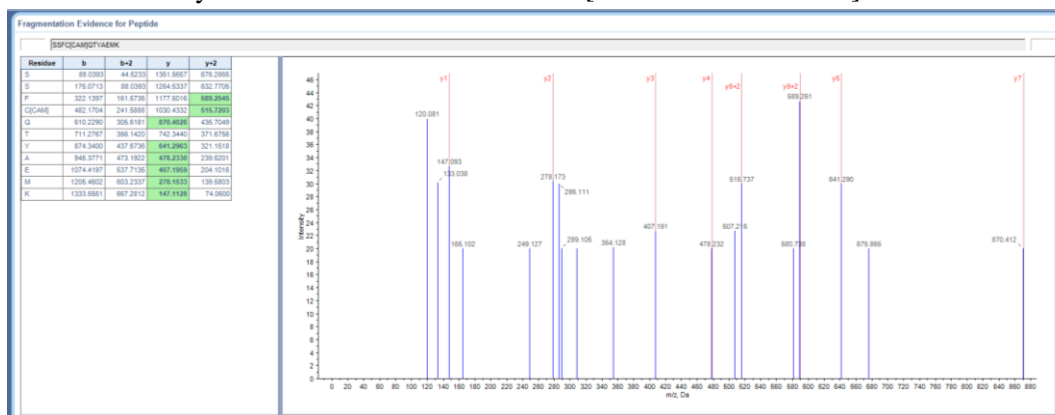
Mechanosensory protein 2. [UniProtKB: K1PY29]



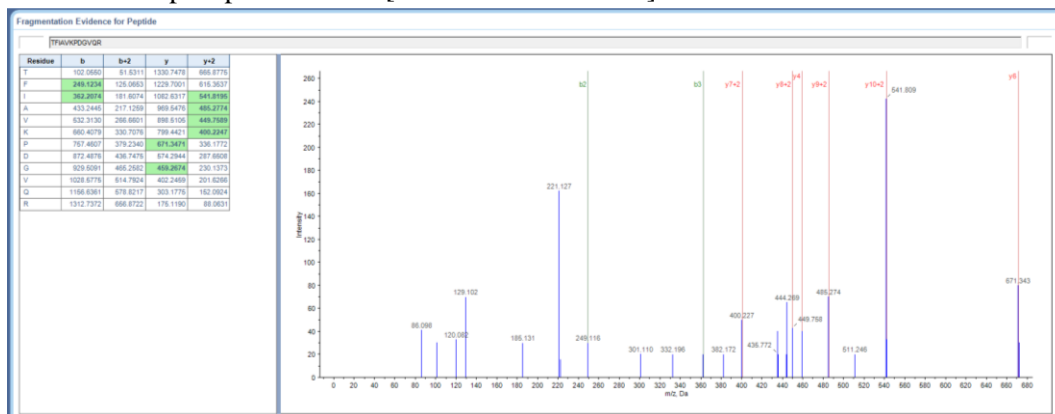
MGC82638 protein. [UniProtKB: Q6GPS9]



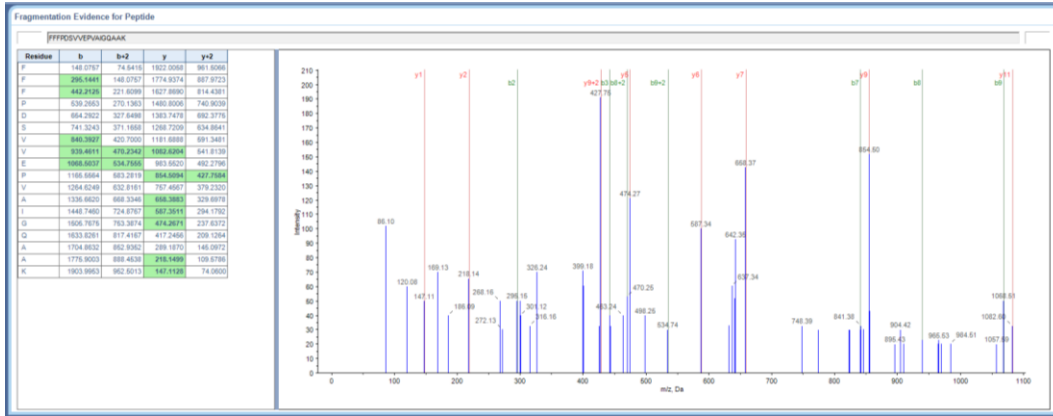
Mitochondrial cytochrome c oxidase subunit IV. [UniProtKB: K9N1H0]



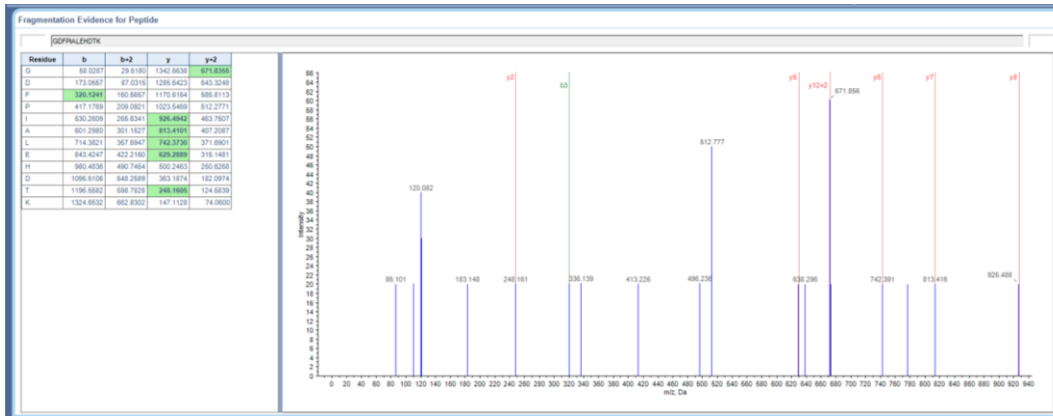
Nucleoside diphosphate kinase. [UniProtKB: B6RB47]



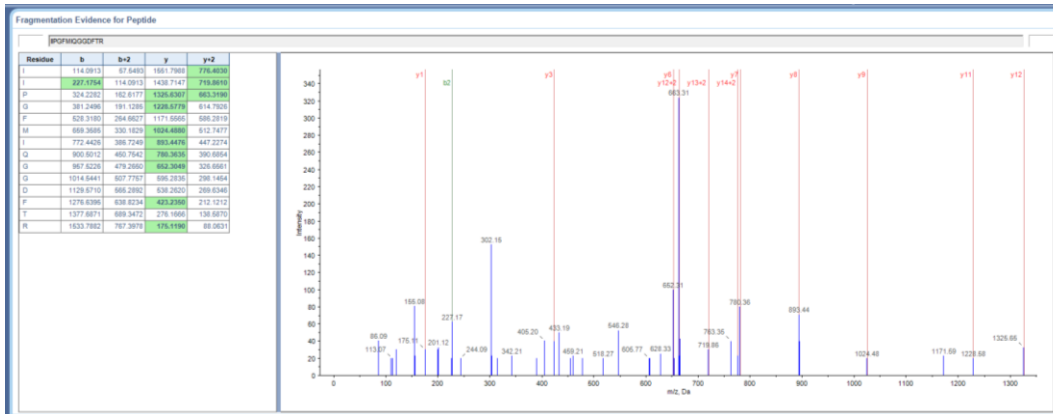
Nucleoside diphosphate kinase-like protein 5. [UniProtKB: K1R1K7]



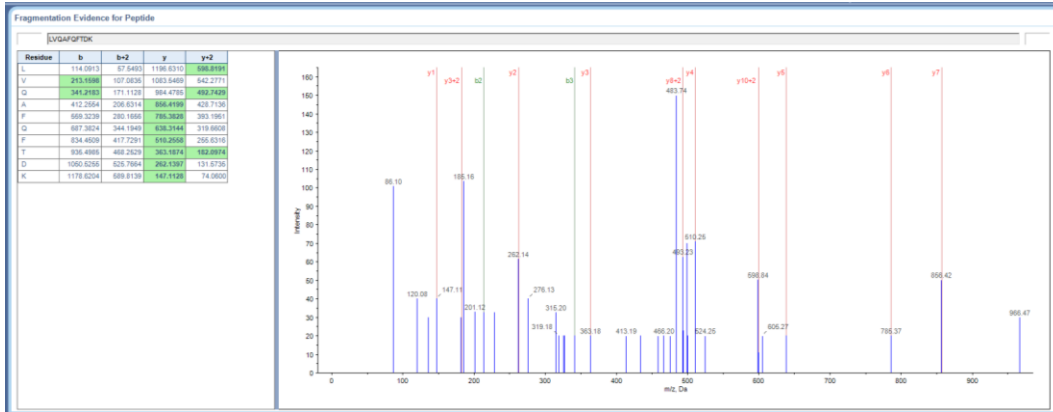
Parkin coregulated gene protein homolog. [UniProtKB: B5XAP1]



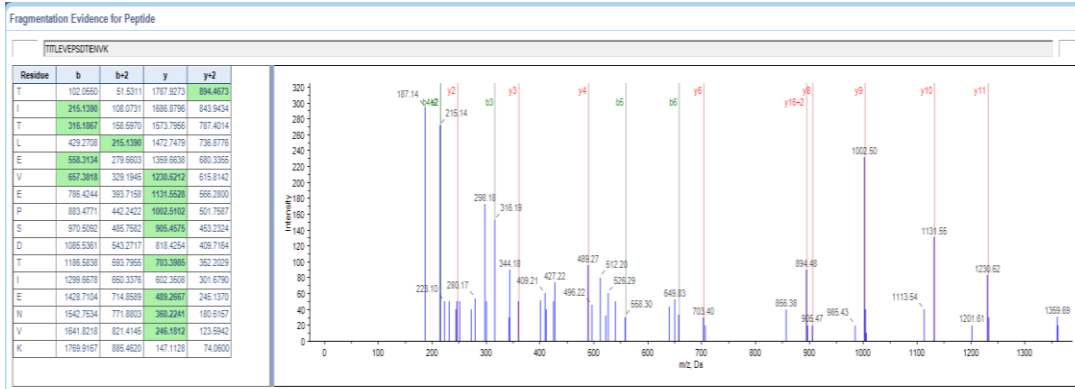
Peptidyl-prolyl cis-trans isomerase. [UniProtKB: C8CBN3]



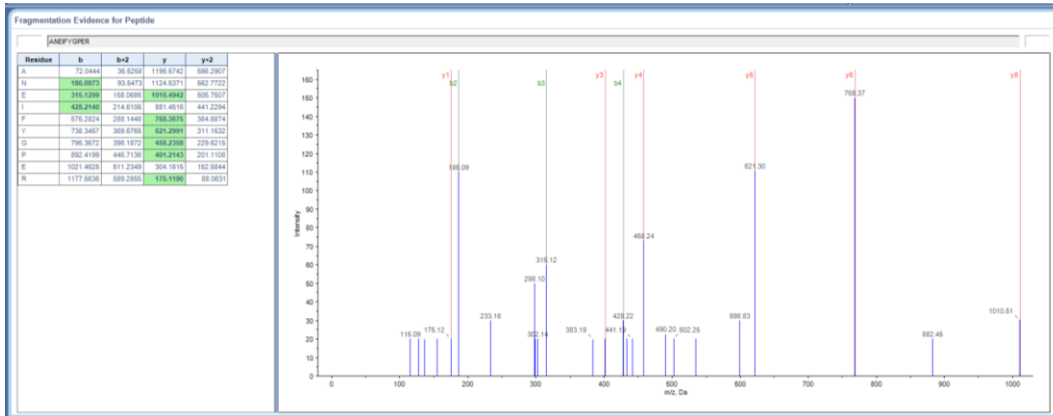
### Peroxiredoxin. [UniProtKB: D3K380]



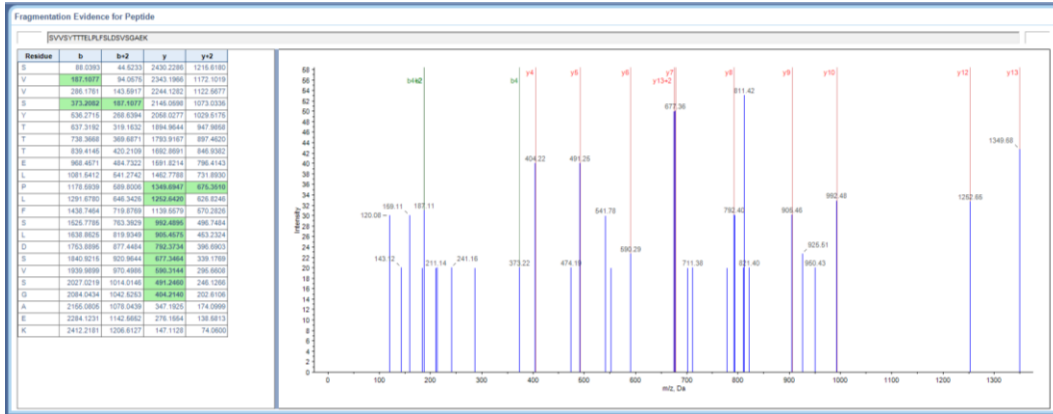
### Ubiquitin [UniProtKB: Q9BH32]



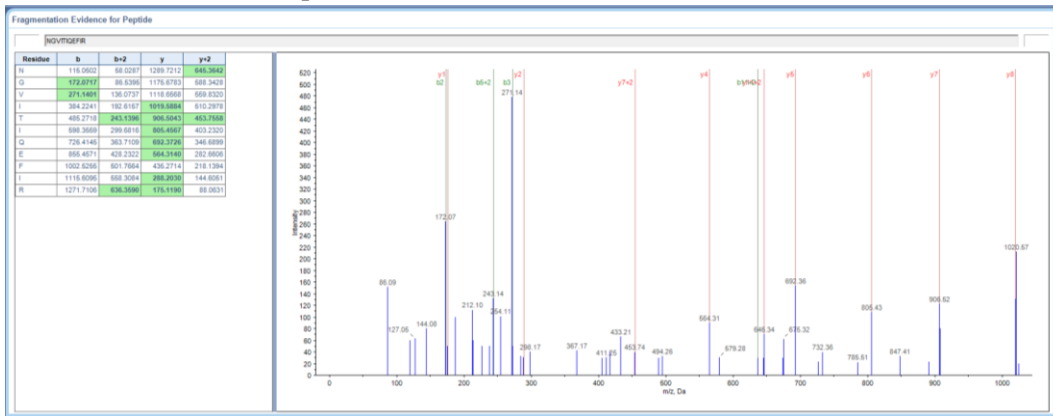
### Putative atp synthase subunit b. [UniProtKB: L7M7R7]



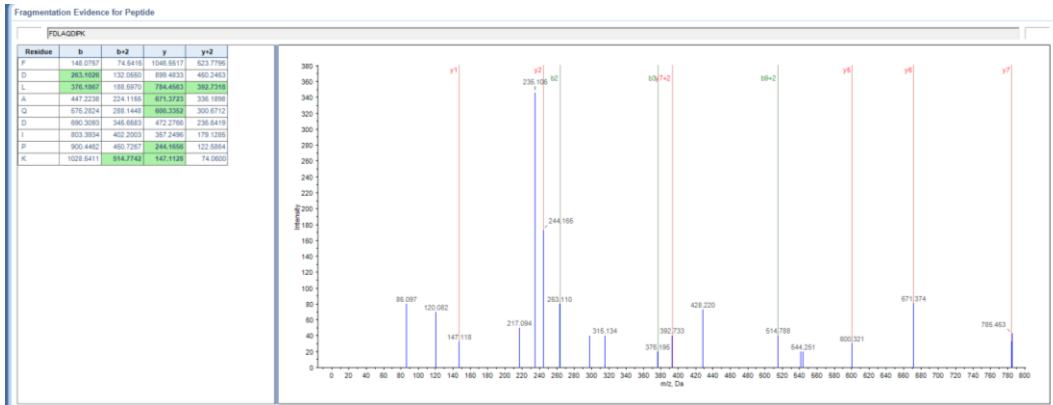
Putative f0f1-type atp synthase gamma subunit. [UniProtKB: L7M679]



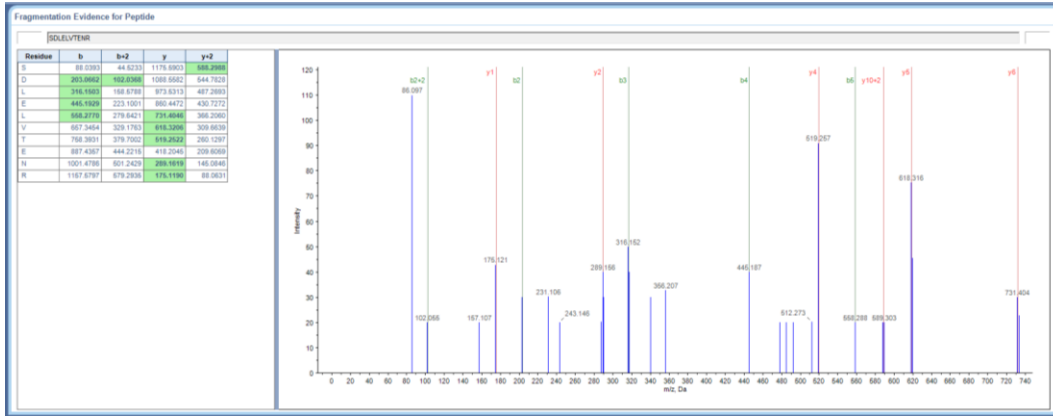
Putative uncharacterized protein. [UniProtKB: A6F8K8]



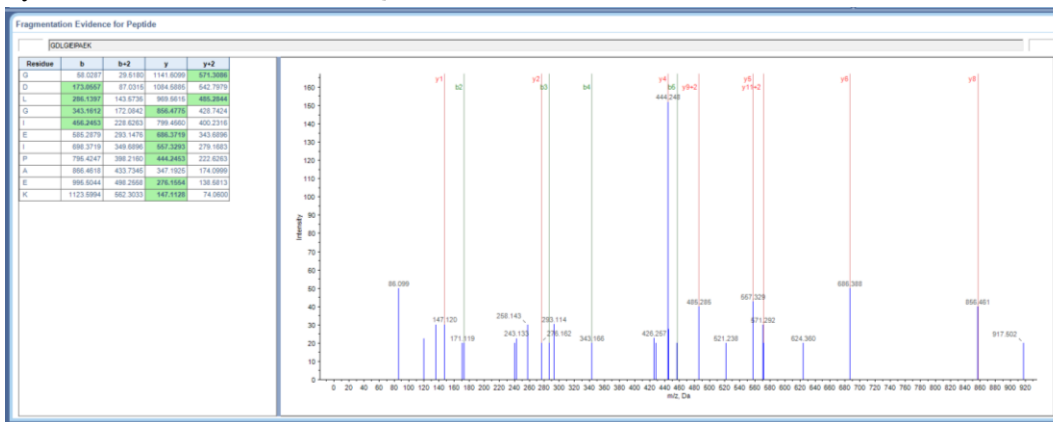
Putative uncharacterized protein. [UniProtKB: Q2J3A4]



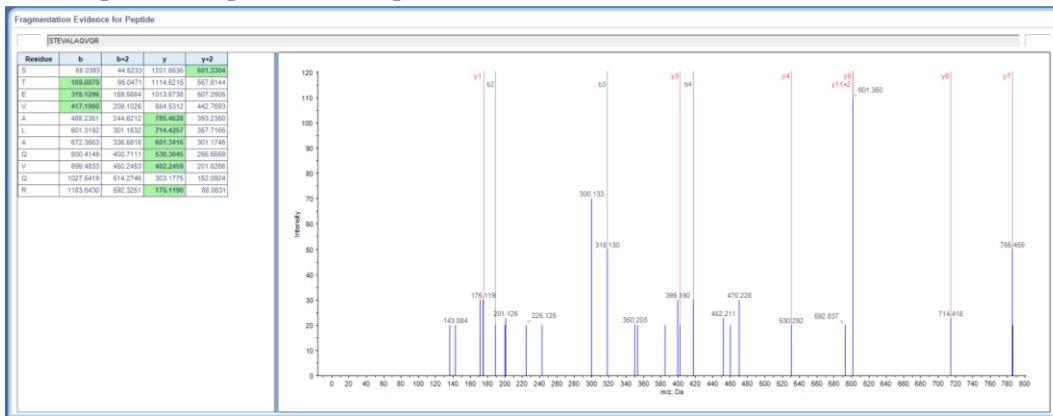
Putative uncharacterized protein (Fragment). [UniProtKB: Q0MTE6]



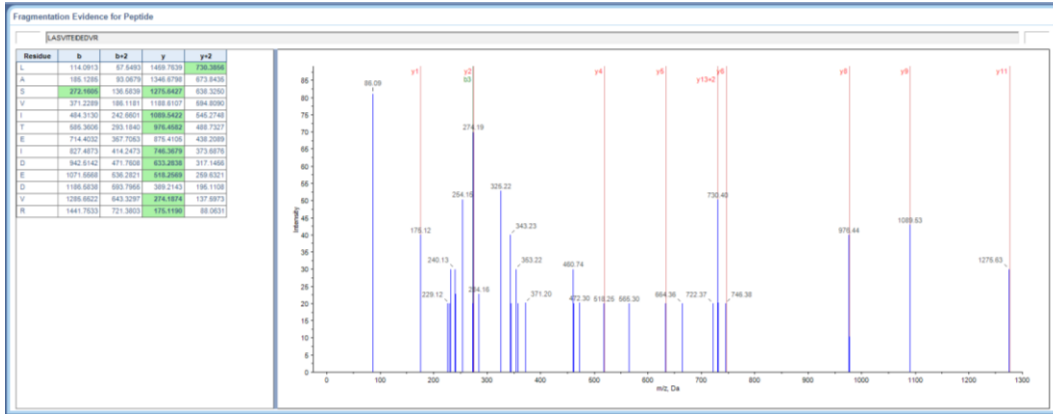
Pyruvate kinase. [UniProtKB: Q0KHB6]



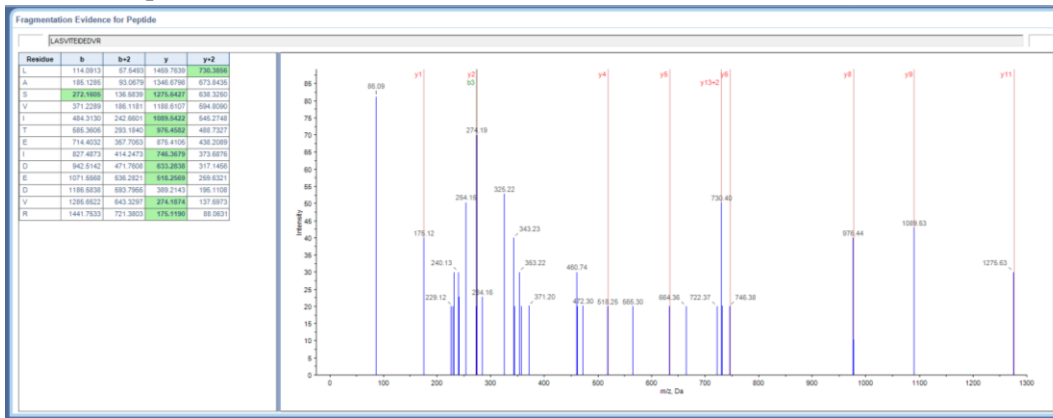
Radial spoke head protein 4-like protein A. [UniProtKB: K1RSP5]



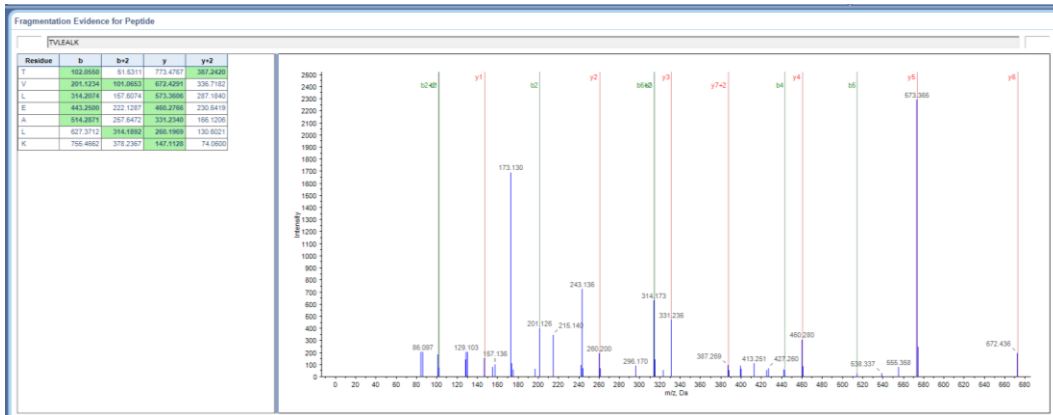
Radial spoke head protein 9-like protein. [UniProtKB: K1Q8G0]



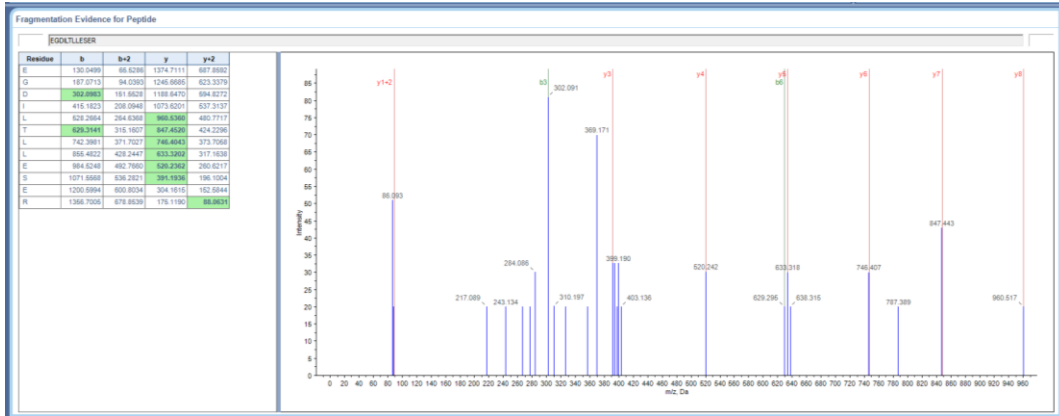
Ras-related protein Rab-43 . [UniProtKB: K1QJY5]



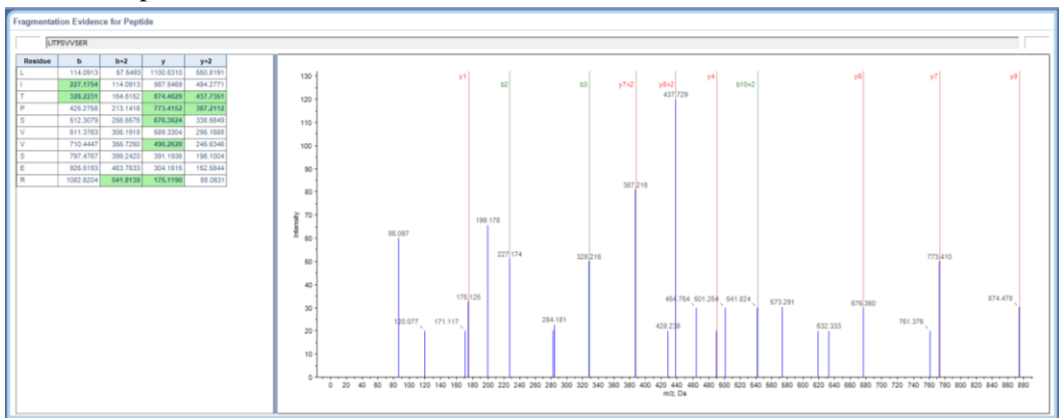
Ras-specific guanine nucleotide-releasing factor 2 . [UniProtKB: K1Q328]



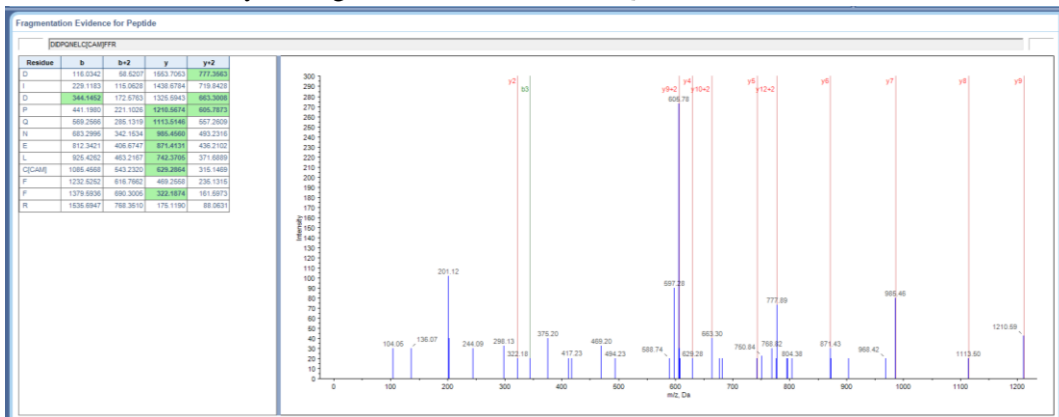
### Ribosomal protein rps28 (Fragment). [UniProtKB: A8UET6]



### Ribosomal protein S25. [UniProtKB: E3P7H5]

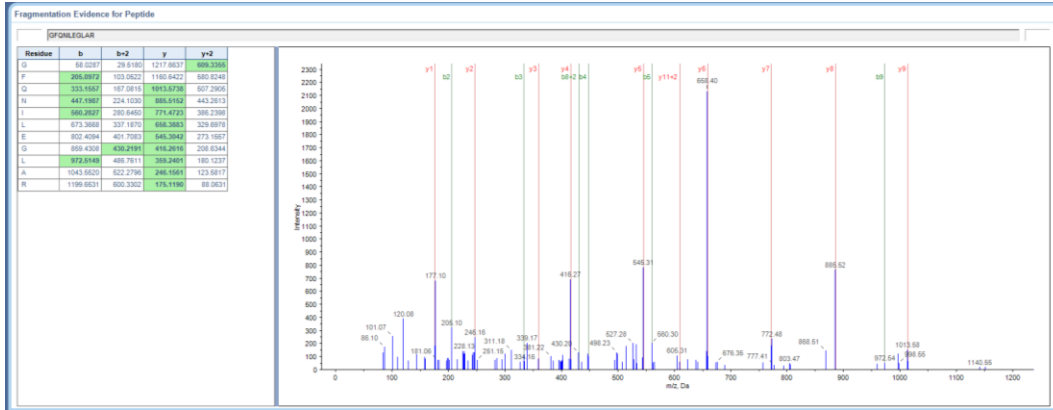


### Roadblock-related dynein light chain. [UniProtKB: Q8T899]

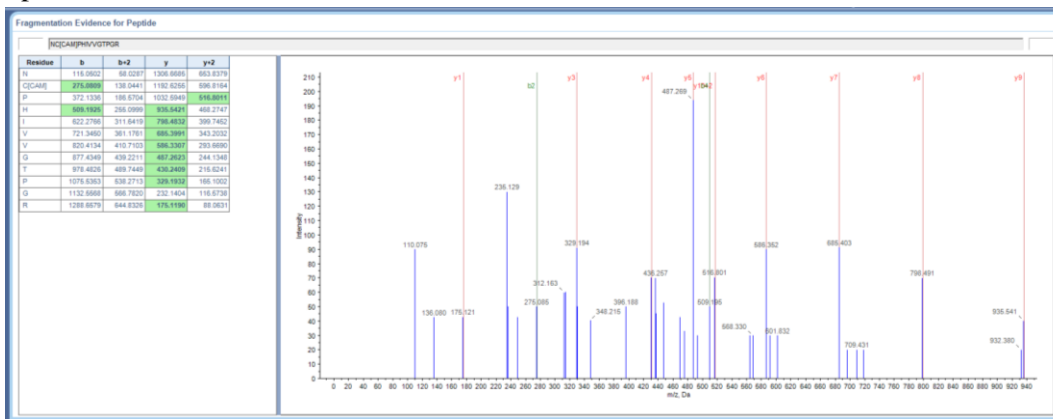




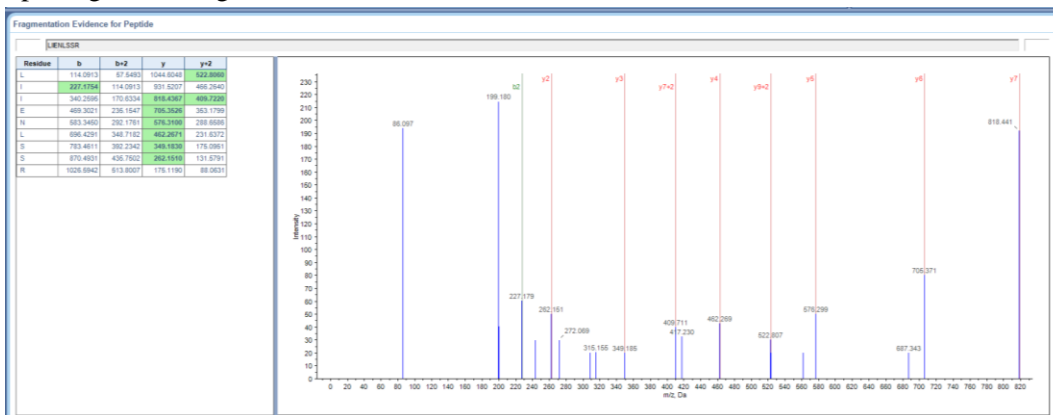
### Sperm surface protein Sp17. [UniProtKB: K1PZL4]



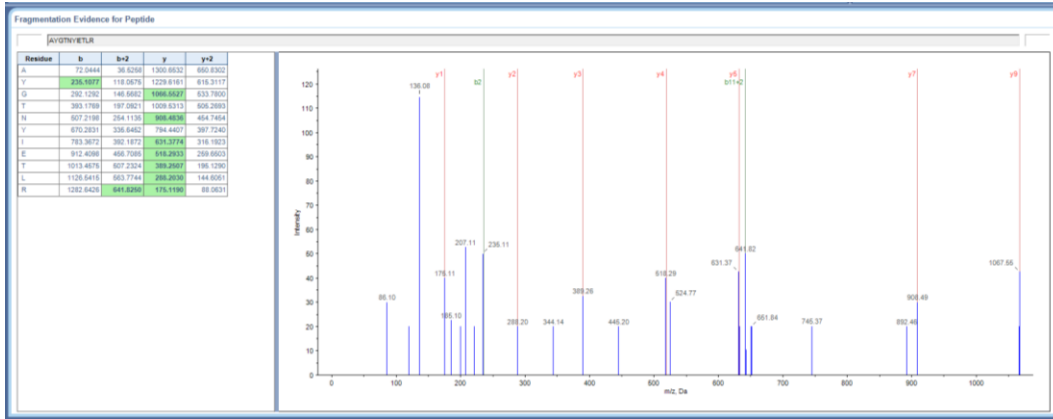
### Spliceosome RNA helicase BAT1. [UniProtKB: K1PF96]



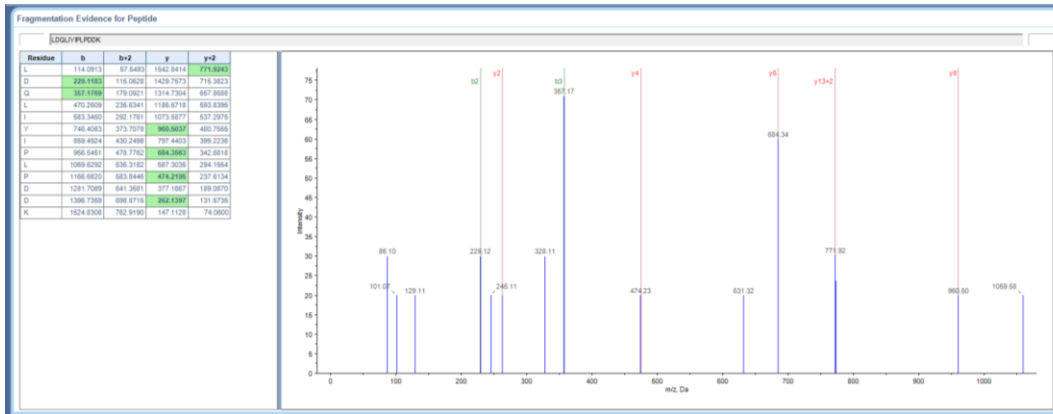
### Splicing factor, arginine/serine-rich 4. [UniProtKB: K1R435]



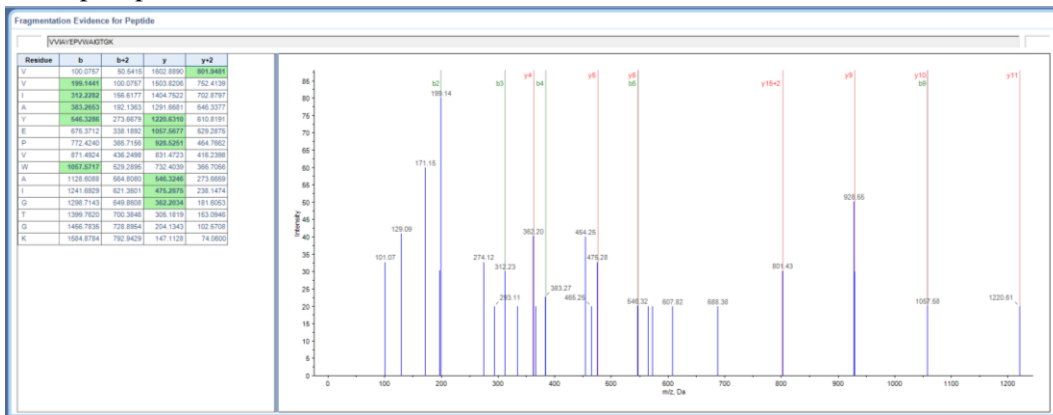
Transcription factor IIB. [UniProtKB: B6RB71]



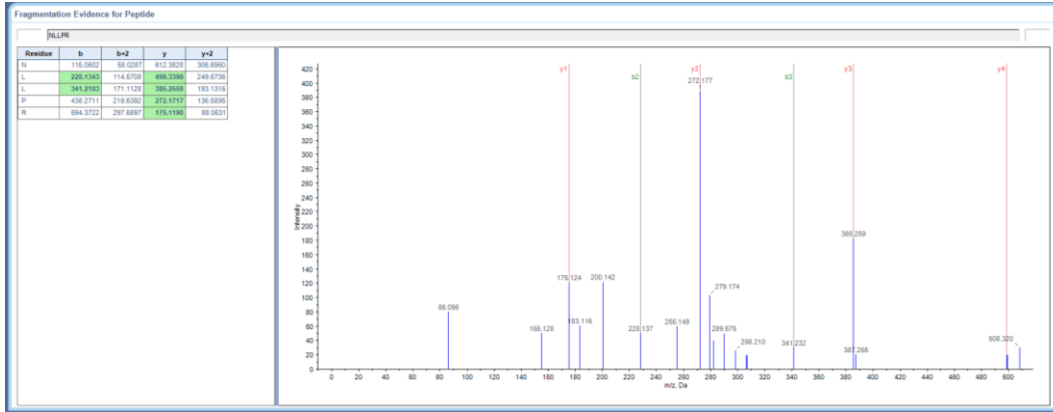
Transitional endoplasmic reticulum ATPase. [UniProtKB: K1PVA1]



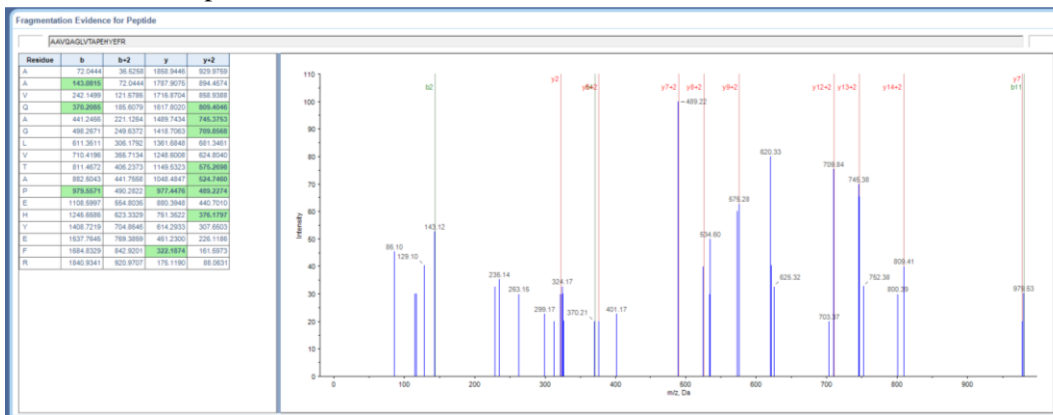
Triosephosphate isomerase. [UniProtKB: B5XB10]



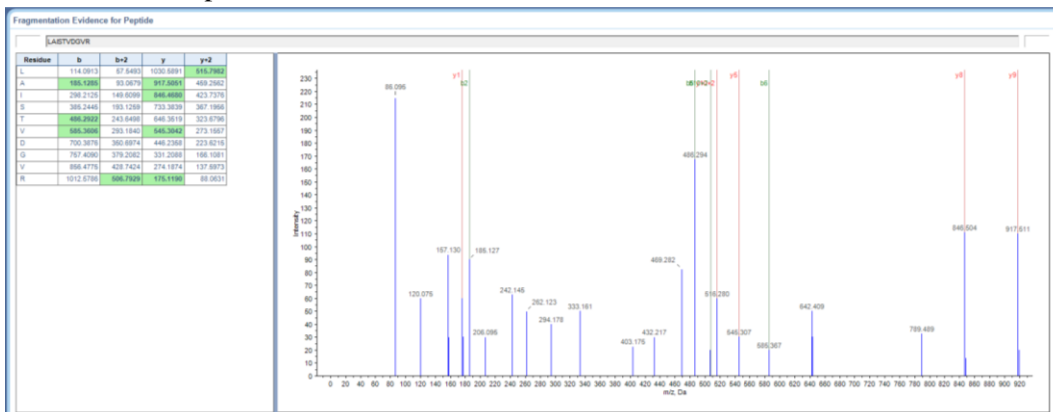
Uncharacterized protein. [UniProtKB: K1RTT4]



Uncharacterized protein. [UniProtKB: H3IK46]



Uncharacterized protein. [UniProtKB: K1R8I8]



# Uncharacterized protein. [UniProtKB: K1RHP9]

